

THE OFFICIAL 2016-18

WYMONDHAM TOWN GUIDE



WYMONDHAM VETS

First for your pets!

We are an independently run practice in the heart of Wymondham market place. A small friendly team, we pride ourselves on our service and we understand the strong bond between owner and pet. Our experienced caring and dedicated team is committed to providing the very best care at all times. Wymondham Veterinary Clinic is the best place for a warm, caring and welcoming atmosphere.



TEL: 01953 600066

www.wymondhamvets.co.uk
enquiries@wymondhamvets.co.uk

- Modern facilities
- 15 minute appointments
- In-house laboratory
- ECG & Blood pressure
- Digital X-Ray & Ultrasound **NEW!**
- Full Dentistry Suite
- Heated kennels
- Car park at rear
- New 'Health Pet Club' **NEW!**
- Dermatological referral on-site
- Puppy Parties **NEW!**
- Qualified nurses offering complimentary clinics for nutritional advice, flea & worm checks, nail clipping, new pet advice and more!



Monday - Friday 8.30am - 6.30pm Saturday 8.30am - 12.30pm



Contents

5	Welcome to Wymondham
7	Wymondham Town Council
9	Wymondham Town Councillors
10 > 11	Safer Neighbourhood Team
13	About Wymondham
15	Historic Wymondham
18 > 19	Map
21	Local History
25	Tourism in Wymondham
27	Places to Visit
31	Tiffey Valley
39	Wymondham Library
41	Wymondham Events
43	Wymondham Music Festival
45	Wymondham Arts Festival
49	Local Arts
51	Venues for Hire
53 > 55	Travelling to Wymondham
56 > 57	Aerial Photograph
58 > 59	Health and Welfare
60 > 67	Religion
71 > 79	Education
81 > 85	Clubs and Societies
87 > 111	Local Business Listing
88	Charities
114	Points of Interest

The Official Wymondham Town Guide 2016/18
© Wymondham Town Council.

The Official Wymondham Town Guide 2016/18 has been designed, produced and published by One Press Publications on behalf of Wymondham Town Council.

No part of this publication may be reproduced without the written permission of the copyright holder, Wymondham Town Council.

Every effort has been taken to ensure that the contents of this guide are accurate, but the publisher cannot be held responsible for errors or omissions.

Whilst reasonable care is taken when accepting advertisements, the publisher will not accept responsibility for any resulting unsatisfactory transactions.

Photos supplied by: Chris Hoelzer
Archive photos supplied by: Philip Yaxley
Wymondham Festival Photos by Anna Meek
Cover and aerial photos by:
www.mike-page.co.uk

Photos cannot be reproduced without prior consent.

Printed by: Swallowtail Print

The logo for One Press Publishing, featuring the word "one" in a black, lowercase, sans-serif font and "press" in a red, lowercase, serif font.

Published by One Press Publishing
Publisher: Jean Wills
jean@onepresspublishing.co.uk
Tel: 07761 062784



STANNARD MOTORS

VEHICLE SERVICE AND REPAIR CENTRE



"A FRIENDLY AND PROFESSIONAL SERVICE..."



Cars, Vans and Motorhomes



Service & Repairs - All Makes • Computer Fault Diagnostics
Air Conditioning Service • Tyres, Batteries & Exhausts • MOT Class 4&7
Motorhome Servicing, Repairs & MOTs • Loan Car Available

01953 606382 or 604006

PHILIP FORD WAY, WYMONDHAM NR18 9AQ
www.smotorswymondham.co.uk

FIELDER Firewood Ltd

Sustainable British Seasoned Hardwood



Chimney Sweep

Woodburners or
Open Fires

Flue/Chimney Cleaning

Trained in Power Sweeping

Fully Insured

AVAILABLE NOW

Truck loads
Sack barrow bags
Nets bags
Kindling

HOUSE COAL
SMOKELESS COAL

Tel: 01953 604897

www.fielderfirewood.co.uk

Formerly C L Fielder



Welcome to the Official Wymondham Town Guide for 2016/18. It has been published by One Press Publications on behalf of Wymondham Town Council.

One of Norfolk's most historic towns, picturesque Wymondham is set in the River Tiffey Valley and the distinctive twin towers of its medieval abbey dominate the skyline. Wymondham is the largest market town in South Norfolk, covering an area of 4,431 hectares, and the parish includes the villages of Spooner Row, Wattlefield and Sutton. Its fast-growing population now exceeds 14,000.

The town benefits from its rail links to Cambridge and its situation on the main A11 trunk road between Norwich and London. The Great Fire of Wymondham in 1615 destroyed 300 properties including the original market cross, the vicarage and the Town Hall. The town is also famed for its former Bridewell jail, built in 1785. It was the first prison in the country with separate cells for inmates. The building now houses the town's heritage museum.

Wymondham Town Council is the statutory local government elected body for the Parish of Wymondham. Its statutory powers and some of its responsibilities are set out in the Local Government section on page 7. Running the only local government office in the town, it is in the front line in dealing with issues, providing information, services and speaking up for the Wymondham parish.

The Town Council is pleased to welcome this latest in an unbroken line of guides which have been published for over 60 years. These have been a vital source of information and help for Wymondham people. We are sure that this latest guide will be welcomed by both residents of long standing and by the many new residents and visitors which the town welcomes in increasing numbers. For information on the Town Council, please call 01953 603302.

We hope you enjoy this edition.
Trevor Gurney, Town Clerk.



A R I S T O C U T S

★ HAIR & BEAUTY ★

19 MARKET STREET, WYMONDHAM, NR18 0AJ

01953 603295

WENSUM HOTEL, BEECH AVENUE, TAVERHAM, NR8 6HP

01603 866580

SUPERIOR IN
COLOURING & CUTTING
KERA STRAIGHT
GREAT LENGTHS HAIR EXTENSIONS

ALL BEAUTY TREATMENTS
CLARINS TREATMENTS
SPORTS MASSAGE
HOPI EAR CANDLING
REFLEXOLOGY
EYELASH EXTENSIONS

CACI NON SURGICAL
TREATMENTS

Clarins KMS GHD Kerastraight Great Lengths

www.aristocuts.org

@aristocuts on twitter

like us on facebook

Like most of England outside the cities, Wymondham is administered within a three tier system of local government. Norfolk County Council, South Norfolk District Council and Wymondham Town Council all have separate buildings, councillors and officers.

Although all three work within a standard code of practice which ensures consistency of operation, each has its own particular range of tasks and responsibilities, which in practice overlap in certain areas. All three tiers of local government work together, but each authority is autonomous and independent.

▶ Wymondham Town Council

Wymondham Town Council runs the town's markets, most of its open spaces and play areas, the cemetery, allotments and wildlife site. It plays a major part in promoting local information services and runs the Tourist Information Centre in the Market Cross. Contact: Trevor Gurney, Town Clerk, 14 Middleton Street, Wymondham.

Tel: 01953 603302

wymondhamtc@btconnect.com · www.wymondhamtc.norfolkparishes.gov.uk



▶ Norfolk County Council

Norfolk County Council is responsible for major county-wide services such as education, highways, police, fire and rescue, social services and libraries. It co-ordinates strategic, transport and emergency planning. Its main office is in County Hall in Norwich.

Tel: 034 4800 8020

infomation@norfolk.gov.uk · www.norfolk.gov.uk

▶ South Norfolk District Council

South Norfolk District Council one of six district councils in Norfolk, is responsible for planning (including most planning applications), housing, council tax and refuse collection, electoral registration, licensing, most leisure centres and pools and street cleaning. Its offices are in Long Stratton.

Tel: 01508 533633

reception@s-norfolk.gov.uk · www.south-norfolk.gov.uk



Kindreds Restaurant is set at the top of the market place in the heart of the historic town of Wymondham in a historic building dating back to 1615.

The restaurant is now open serving fine dining and Modern French Cuisine using locally sourced Norfolk produce with specialty wines, spirits and craft beers.

2 BRIDEWELL STREET, WYMONDHAM NR18 0AR
01953 601872



For electoral purposes [Wymondham](#) is split into five wards. Each ward is represented by three Wymondham Town Councillors, one South Norfolk Councillor and four wards (Abbey, Northfields, Rustens & Town) are combined as the division of Wymondham for a Norfolk County Councillor the 5th ward (Cromwells) is part of the Forehoe division for County Council purposes.

Wymondham is situated in the constituency of Mid Norfolk whose elected Member is George Freeman. His office is situated at 8 Damgate Street, Wymondham, telephone (01953) 600617. For details of properties that make up each ward, please contact the Council on 01953 603302 or visit our offices at 14 Middleton Street. The Leader of the Council and Town Mayor for 2015/16 Councillor Joe Mooney, Deputy Councillor Robert Savage.

Wymondham's councillors are as follows:

▶ [Abbey Ward](#)

Norfolk County Council : Cllr. J Mooney

South Norfolk Council : Cllr. R Savage

Wymondham Town Council : Cllr. K Hurn, Cllr. R Savage, Cllr. P. Stearn

▶ [Cromwells Ward](#)

Norfolk County Council : Cllr. C. Foulger

South Norfolk Council : Cllr. J. Hornby

Wymondham Town Council : Cllr. J. Halls, Cllr. J. Hornby, Cllr. A. Osbourne

▶ [Northfields Ward](#)

Norfolk County Council : Cllr. J. Mooney

South Norfolk Council : Cllr. J. Mooney

Wymondham Town Council : Cllr. J. Mooney, Cllr. D. Underwood, Cllr. C Longhurst

▶ [Rustens Ward](#)

Norfolk County Council : Cllr. J. Mooney

South Norfolk Council : Cllr. P. Broome

Wymondham Town Council : Cllr. P. Broome, Cllr. A. Holden, Cllr. S. Sayer

▶ [Town Ward](#)

Norfolk County Council : Cllr. J. Mooney

South Norfolk Council : Cllr. L. Hornby

Wymondham Town Council : Cllr. L. Hornby, Cllr. I. Flatt, Cllr. S. Wyer

“

My priority is to listen to your local concerns and work in partnership with both our local communities and agencies to improve the quality of life within your neighbourhood.

In addition to the Beat Managers and PCSOs, every Safer Neighbourhood has five teams of Safer Neighbourhood Team (SNT) Patrol officers who will respond to your calls for service 24 hours a day, investigate the crimes in your area and work with the Beat Managers and PCSOs to deliver your local priorities.

You can meet your local officers at one of our street briefings or at our Neighbourhood Board meetings held in partnership with South Norfolk District Council that are held three times a year.

Details about the team, meetings and the latest news from the neighbourhood can be found on the Wymondham pages of the Norfolk Police website, www.norfolk.police.uk

You can also contact us by telephone, calling the non-emergency number 101 or email sntwymondham@norfolk.pnn.police.uk Please also feel free to stop any of my staff when they are out on patrol.

Inspector Lou Provert

”

@southnorfpolice
@insprovert





The Team





CLARENDON — KITCHENS — ESTD 1994



Your local kitchen experts
Call us **01953 601500**

Come and see us at our showroom, just off the A11:

Unit 17, Gateway 11 Business Park,
Penfold Drive, Wymondham NR18 0WZ

www.clarendonkitchens.com

Wymondham, pronounced “Windham”, is the largest market town in South Norfolk, with a population of over 14,000; also serving a rural hinterland of a further 15,000. It is a fast-growing community but still retains much of the character of an ancient market town.

There is no agreement as to the origins of the name. It could have derived from Wimond ham, the homestead of Wimond, a sometimes forgotten Saxon chieftain who settled with his followers in the locality. Another possibility is ‘the home of the Waegmundings’, a family of the Geats, who came from the Baltic to settle in Norfolk and were at one time ruled by Beowulf.

A third theory is that the word is of combined Celtic and Norse origin meaning ‘the holm or meadow between the rivers’. Holm, sometimes corrupted to ham, frequently signified a fork of land formed by the junction of two rivers. Wymondham does lie at confluence of two small streams, the Tiffey and the Bays. There is a parallel case in the name of an existing Danish village, Vindeholm.



▶ **Markets**

Henry VI granted the town the right to hold a market in 1440, and a market has been held every Friday since then. Wymondham was the first town in Norfolk to stage a farmers market in March 2000. Farmers markets are now regularly held on the third Saturday of the month from 9am to 1pm. For more information on markets, contact the Town Clerk on **01953 603302**.

▶ **Industry**

Wymondham has had a number of industries over the centuries. The town was once a renowned centre for woodturning and brushmaking, and for producing crepe, satin and bombazine. In the mid 19th century, there were said to have been some 600 cottage looms in the town. Unfortunately, the weaving, woodturning and brushmaking industries have long since gone, but today the area is proud to be the home of the world- famous Lotus cars.

ANGLIAN HEATING COMPONENTS

—LIMITED—

OIL • GAS • LPG • SOLID FUEL
SPARES & CONTROLS

**YOUR LOCAL SUPPLIER OF
HEATING SPARE PARTS
TO TRADE AND RETAIL
FOR OVER 30 YEARS**

**13 SPUR INDUSTRIAL ESTATE
POST MILL CLOSE,
WYMONDHAM NR18 0NL**

TEL: 01953607833 - FAX: 01953605801

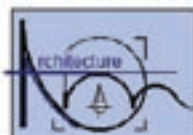
www.ahcomponents.co.uk
spares@ahcomponents.co.uk

N J Myhill Architecture

Professional Design & Plans Drawing Service

www.njmyhill-architecture.co.uk

- Home Extensions, Remodeling, New Developments, Garden Structures and Redesigns all undertaken
- Free Initial Consultation
- Planning and Building Control Submissions
- Competitive Fees



Call now:

01953 603413

nigel.myhill@live.co.uk

Call us today on
01953 859180

eama
EAST ANGLIAN MOTOR AUCTIONS

**“Get the best price for your
car at one of our many,
well-attended auctions!”**

Vehicle, Plant, & Machinery
Auction Specialists



www.eama-norwich.co.uk

Peter Heales

• GARDEN CENTRE •

For all your gardening needs

Extensive Range of Quality Roses and Plants

• Tea Room • Gift Shop • Display Garden

London Road Attleborough NR17 1AY

This section highlights the key dates in Wymondham's long and fascinating history – and you can find out a great deal more from The Wymondham Heritage Museum, telephone [01953 607494](tel:01953607494) or [600205](tel:01953600205); also the Wymondham Town Archive housed in the Town Council office, and the Abbey Archive.

1107

Abbey foundation. William d'Albini, Chief Butler to Henry I, founded the abbey as a cell for his brother's abbey in St. Albans. Dedicated at that time to the Blessed Virgin Mary, this was later changed to St. Mary and St. Thomas of Canterbury.

1174

Becket's Chapel was built. Until recently, this was the town's library.

1286

First mention of a market cross in Wymondham.

1445

Abbey Church west tower was constructed. The abbey church was intended to serve both the Benedictine monks and Wymondham's parishioners. But there were many quarrels between the two factions, often concerning the hanging and ringing of the parish bells. These problems were eventually solved when the people erected the great west tower in 1445, and the abbey gained its independence from St. Albans in 1448.

1538

Dissolution of the Monasteries. The abbey church was granted to the people of Wymondham. The monastic buildings were demolished.

1549

Kett's Rebellion. [See more about this on page 21.](#)

1615

The Great Fire destroyed over 300 buildings in the town centre, including the Market Cross. The Market Cross was replaced by the current building, which cost £25 to construct. It was fully restored in 1988-9 at a cost of £95,000. The Market Cross is now home to the town's Tourist Information Centre.

1785

The Bridewell, Wymondham's model prison, was built. It was the first prison in the county with separate cells for inmates. The building served as a police station from 1850 – 1963, and a magistrates court from 1879 – 1992. Wymondham Heritage Society purchased the Bridewell in 1994, restoring and converting it for community use.

1845

The railway arrived in Wymondham via the Norwich to Ely line.

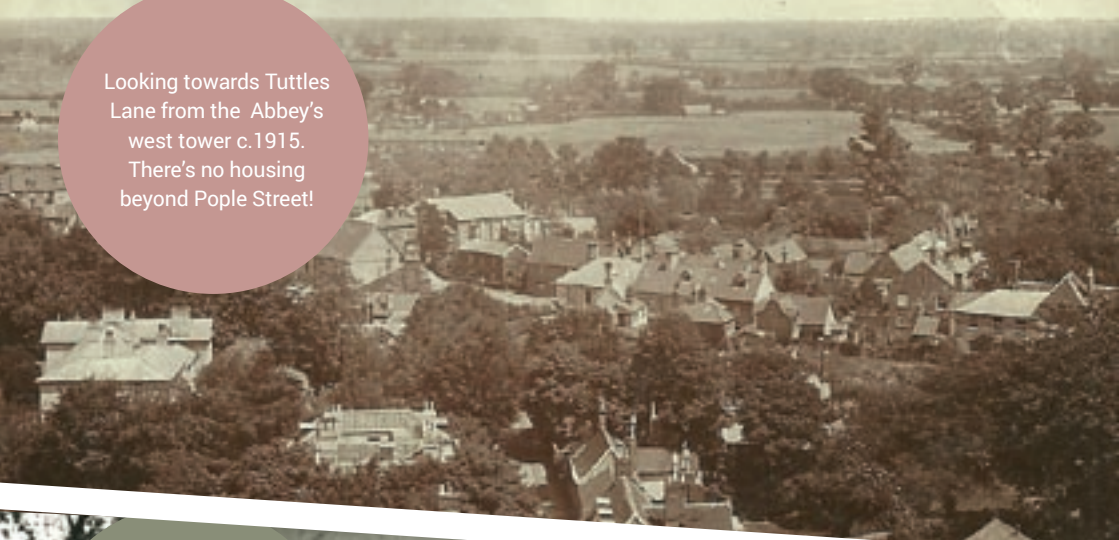
1847

Wymondham to Dereham railway line opened, which is now operated by the Mid-Norfolk railway.

1934

Completion of Sir Ninian Cooper's great gilded screen at the abbey church, a memorial to Wymondham men killed in World War One.

Looking towards Tuttle's Lane from the Abbey's west tower c.1915.
There's no housing beyond Pople Street!



The Great Flood of Monday August the 26th 1912 caused widespread damage. This scene is by Damgate Bridge



Fairland Street c. 1910
Perhaps little changed in appearance apart from the entrance to the saleground on the right- and the mode of transport!





Frairscroft Lane
c.1912



White Horse Street in
the 1920's. The garage
has long since gone.



The procession for
Wymondham's first carnival
in 1936. On the left is the
Kings Head Inn on the site
now occupied by the Co Op.



Lodge Farm

Robert Ball Lane School

Parish Council

Forest Lane (Track)

Wymondham High School

Leisure Centre

Mill Meadow Farm

Wentworth

Wymondham Abbey

Wymondham Abbey Station

Sturminster Bridge

Recall Oil

Croft House Farm

Cavill House

Cavill Cottages

George Bridge

Industrial Estate

Johnson's Farm

Canary Pits

Wymondham

Seagrass Lodge

Recycling Centre

Bridge Estate



WYMONDHAM

Contains Ordnance Survey data © Crown copyright and database right 2015



Ayton Products supplies a diverse range of quality British and European Standard products for numerous applications for the highway maintenance, construction, building and roofing markets.

The company's market leading range of specialist surfacing materials supports the widest range of surface treatment binders and specialist bitumen products in the UK.



www.ayton.co.uk

Ayton Products is a trading name of Kier MG Limited



Browick Road, Wymondham, Norfolk NR18 0RJ
Tel: 01953 602002. Fax: 01953 604965 Email: enquiries@ayton.co.uk



UNEQUALLED FOR Quality and Friendly Service

"probably the best in the area"

Fish and Chips - Children's Menu
Pukka Pies - Burgers - Chicken Portions

No. 36, Market Street
Wymondham

Open:
11.30 - 2pm & 4.30 - 10pm

Telephone Orders Welcome

01953 603210

- Fresh fish delivered regularly throughout the week
- Award winning sausages from local butcher
- Pies baked daily on premises
- Potatoes processed daily on our premises to ensure freshness



Robert Kett: [Wymondham's Local Hero](#)

Robert Kett is Wymondham's most famous and perhaps its greatest son. He was a prominent figure in the town between 1520 and 1549, actively involved in its agricultural, commercial, civic and religious life.

During the 1549 summer fair, Kett put himself at the head of a protest movement against the injustices of his day, especially the enclosure of common land. Up to 15,000 people joined him at a camp on Mousehold Heath outside Norwich, inspired by his vision of a fairer society. But after dominating the city for six weeks, Kett's rebel force was defeated by a large royal army. Kett was found guilty of treason and was executed at Norwich Castle on 7th December 1549. On the same day, his brother William was hanged from the west tower of the abbey church.

A commemorative plaque to the Kett brothers was unveiled at Becket's Chapel during the town's Kett'99 celebrations, and pupils from Robert Kett School lay flowers there each year on the anniversary of the Kett's' death.



Wymondham Heritage Society

Welcome to the Wymondham Heritage Society. Our long-established society brings together local people who care about the living history of our town.

Monthly meetings provide opportunities to hear speakers on a variety of historical topics and to meet other members; a strong publishing programme of leaflets, articles and books is made possible by the original research carried out by local historians. Our Museum Committee runs our excellent Heritage Museum in the Bridewell. Our environment committee makes comments on planning applications and other matters affecting the historic part of the town.

Geoff Head (01953 602457)

www.wymondhamheritagemuseum.co.uk



Excel
Electrical Services Ltd

EXCELLENCE in Electrical across Norfolk & Suffolk

WHY CHOOSE US?

- ✓ Quality
- ✓ Reliability
- ✓ Experience
- ✓ Excellence

SERVICES INCLUDE

- ✓ Domestic
- ✓ Retail, Commercial & Industrial
- ✓ Electrical Testing & Certification
- ✓ Electrical Design

T 01508 488007
07718 206110

E enquiries@excelelectrical.co.uk

W www.excelelectrical.co.uk



Norfolk
Trusted Trader



JEANETTE RAVEN

CURTAINS, BLINDS AND SOFT FURNISHINGS

- ♥ Bespoke curtains and roman blinds
- ♥ A wide selection of fabrics to choose from
- ♥ Poles & tracks to order
- ♥ Roller, venetian and vertical blinds to order
- ♥ Cushions & co-ordinating accessories
- ♥ Alterations



43 Queens Road, Hethersett - 07722665578 or 01603 812955
netty263@googlemail.com

Open Tuesday, Wednesday & Thursday 9.30am - 4.30pm

Hansells

Solicitors and Financial Advisers

Friendly, independent, professional advice

- Elderly Client Law • Wills, Estates and Lifetime Planning
- Powers of Attorney • Living Together Agreements
- Buying and Selling Property • Divorce • Child Maintenance
- Notary Public • Financial Planning • Accidents • Employment

Regulated by the Solicitors Regulation Authority No 50602. Authorised and Regulated by the Financial Conduct Authority



10 Fairland Street, Wymondham, NR18 0AW
T 01953 85 75 78 E info@hansells.co.uk



www.hansells.co.uk



The Wymondham Town Archives

Wymondham's archives have been ranked as one of the best in Norfolk after the great collections in Norwich, King's Lynn, Great Yarmouth and Thetford.

The Town Archive, which is based at the Town Council offices, is steadily expanding. Some documents relate to the 17th century, but most are from the 18th and 19th centuries. There is a large index of personal names, and there are sections on places, buildings and trades, along with photographs and maps.

The archive is open for general use on Tuesdays from 10am to 1pm. Enquiries are welcome by phone and post (please send self addresses envelope) to The Honorary Archivist, Town Council Offices, 14 Middleton Street, Wymondham NR18 0AD or by telephone to Mary Garner **01953 604535** or Richard Fowle **01953 603000**.

Wymondham Abbey Church also has an extensive archive. Enquiries can be made in writing to Paula Lucas, Honorary Archivist, care of The Abbey Office, Church Street, Wymondham, NR18 0PH.

www.wymondham-archive.norfolkparishes.gov.uk
wymondhamarchive@hotmail.co.uk



SURFACING LTD

- Driveways
- Forecourts
- Footpaths
- Roadways
- Car Parks
- Vehicular Access
- Trench & Patch Service
- Hand or Machine Laid

DOMESTIC & COMMERCIAL

Work carried out to
Local Authority Specification
Covering Norfolk & Suffolk

Free Survey & Quotations
Tel: 01953 459778

Owl Barn, Norwich Road, Besthorpe,
Attleborough, Norfolk, NR17 2LA
www.mwsurfacing.co.uk

Ian Myhill Electrical

- Mains Upgrades & New Circuits
- Interior & Security Lighting
- Electrical & Plumbing Installations
- Alterations & Maintenance
- Residential & Commercial
- Other odd jobs considered

**Call Ian
Now**



**No job
too small**

Tel: 01953 609917
Mobile: 07881 928066
E-mail: ian.myhill@talktalk.net

JIMMY BURT PLASTERING SERVICES

35 YEARS EXPERIENCE ESTABLISHED SINCE 1981

- ALL PLASTERING WORK • INTERNAL & EXTERNAL RENDERING
- NEW BUILD • EXTENSIONS • DOT & DAB PLASTER BUILDING
- INSURANCE WORK UNDERTAKEN • FREE QUOTES
- FRIENDLY SERVICE • RESKIMMED ARTEX

TELEPHONE

01953 713855
07833 965606



Norfolk
Trusted Trader

Tourism Policy

Tourism is an integral part of our national and local economy. The county, district and town councils each have policies for developing the contribution which tourism can make to our local community. Norfolk Tourism, a public and private sector partnership, actively markets the county and supports the development of the tourism 'product'. Visit Norwich is the main marketing body for Norwich, South Norfolk and Broadland.

Please visit: www.visitnorwich.co.uk

Wymondham has great appeal as a tourist destination, thanks to major attractions like the Abbey and other fine historic buildings and streetscapes, the museum, railways and green environment. Much of this appeal is fragile and might easily be overwhelmed by large numbers of visitors. Promoting sustainable tourism, fitting in with the daily life of Wymondham, is the Town Council's key aim.

Tourist Information

The Market Cross is home to the Tourist Information Centre (TIC). It is run by the Town Council, and is a valuable resource for both local people and visitors. As a networked TIC it carries information about other UK holiday destinations and has a wide range of brochures and guides along with souvenirs.

For opening times: 01953 604721

www.wymondhamtc.norfolkparishes.gov.uk/tourist-information-centre
wymondhamtic@btconnect.com



JOHN RYDER REMOVALS

WWW.JOHNRYDER.CO.UK

DOMESTIC REMOVALS LOCAL & UK

- Removals & Storage
- 3.5 ton and 7.5 ton Vehicles
- Free Estimates and Advice
- Packing Service

HOUSE CLEARANCE SPECIALISTS

- Surplus Furniture Bought or Taken to Auction
- Secondhand Furniture Sold
- Skips Arranged

TEL: 01953 605553

FAX: 01953 605553

MOBILE: 07889 378970

Unit East End 1, Vioarage Farm, The Green, Wicklewood

TAN CARS

TAXI TAXI

Your Local Wymondham Taxi Company

- Local Family Run Business
Established Over 30 years · Lady & Male Drivers
Luggage Carrier · Parcel & Courier Service
· Local & Long Distance · Airports & Seaports
· Special Occasions Including: Theatre Trips, Races, Etc.
· Air Conditioned Cars
· 4, 6 & 8 Seater Cars, People Carriers & Mini Bus
· Competitive Rates · All Areas Covered



tan_cars@btconnect.com · www.tan-cars.co.uk

01953 602693



Welcome to The Mid-Norfolk Railway

The Dereham – Wymondham Abbey Line

Open from the end of February to Christmas each year, join us for:

Steam Train Rides (summer only) Diesel Train Rides Steam and Diesel Galas

Fish and Chips Specials On-train Cream Teas and High Teas

Jazz and Folk Trains Beer Festival Family Fun Days

Weekend at War Halloween Trains Santa Specials (The Lapland Express)

You can even book Dereham Station and a complete train for your Wedding Reception

For more details, visit our website at www.mnr.org.uk or telephone 01362 851723

Wymondham Historic Railway Station

The 36 3/4 mile Norwich and Brandon Railway, incorporated in 1844, backed by George and Robert Stephenson and built by Girsell and Peto, opened as the Norfolk Railway with a double track line on 30th July 1845.

It made an end-on connection at Brandon with the Eastern Counties Railway, which had extended its route from Shoreditch to Newport, Essex, northwards via Cambridge and Ely on the same day. At Norwich, services terminated at Trowse until the Swingbridge was completed on 15th December 1845. From this time on, through services commenced between London, Norwich and Great Yarmouth, calling at Wymondham.

There is a restaurant on site called Station Bistro; telephone 01953 606433.



Station Approach, Wymondham
Telephone: 01953 606433
www.stationbistrowymondham.co.uk



You'll be spoilt for choice!

With over 30 years of experience, John Doe has an excellent reputation for quality, style and choice. We offer extensive ranges of carpets, beds and much more. You can find everything for your home in our store.



John Doe

CARPETS • BEDS • FURNITURE

johndoe.co.uk
Sawmills Road, Diss IP22 4DA
01379 644 081



Mid-Norfolk Railway

The Mid-Norfolk Railway runs through eleven miles of attractive rural Norfolk, linking the ancient market towns of Wymondham and Dereham, and now runs occasional trains north of Dereham to Hoe Crossing.

The MNR has a regular programme of Special Events from the end of March through to Santa Specials in December. On Wednesdays and Thursdays and at the weekend in the summer, we use Steam or on low season journeys we frequently use a Heritage Diesel Multiple Unit, from which the beautiful and varied rural countryside may be best appreciated.

Dereham Station is a Victorian era building which has been restored to a 1950s appearance, similar to the way it would have looked when Dereham was still an important railway centre. It has a period ticket office, a tearoom, a shop and extensive parking for our visitors.

Wymondham Abbey Station is located close to the beautiful twin towered Abbey in Becketswell Road and adjacent to the river Tiffy. Wymondham itself has a number of beautifully preserved historic buildings including the timber framed Market Cross and the Green Dragon inn. The excellent town museum is housed in the Bridewell, a former gaol.

From Cream Teas and High Teas to Jazz Trains and Fish and Chips Specials, there is plenty to experience at the Mid-Norfolk Railway, operated almost completely by volunteers.

Please visit our website at www.mnr.org.uk for more information - we look forward to seeing you.



Heritage Museum

The museum is housed in the Bridewell, a former prison built in 1785 which also served as a police station and a magistrates court in the past. The museum, which is entirely run by volunteers, tells the story of the building and of Wymondham and its people. There are special exhibitions every year.

10 The Bridewell, Norwich Road, NR18 0NS
Telephone: 01953 600205 / 607494
www.wymondhamheritagemuseum.co.uk

Rosedale FUNERAL HOME

The Rosedale
Funeral Plan
enables you to
select and pay
for the
arrangements
of your choice at
today's prices.



A family
business
- we believe
it makes a
difference

BEREAVEMENT
SUPPORT GROUP

ADVICE ON
FUNERAL
GRANTS



16 Middleton St
Wymondham
NR18 0AD

**01953
601103**

Carpet, Curtain & Upholstery Cleaning

 **Cleaning Doctor**[®]
as good as new

- ✓ **Affordable**
- ✓ **Efficient**
- ✓ **Friendly**
- ✓ **Local**
- ✓ **Reliable**
- ✓ **Trusted**



call:
Kevin Jarvis

mobile: 07773 280 772

free: 0800 772 0772

www.cleaningdoctor.co.uk/norwich



Les Cooper Builders Ltd

Bathrooms & Kitchens from Start to Finish

Design & Supply

All work including Tiling, Plumbing,
Carpentry, Plastering, Electrics

General Building work covered:

Brickwork, Plaster, Carpentry, Painting and Decorating

Alterations to buildings and extensions

01953 606480 07740 986865

77 High Street, Wicklewood, Norfolk, NR18 9QA

www.wymondhambathrooms.co.uk ~ lescooperbuilders@tiscali.co.uk

Tiffey Valley Wymondham's Waterway

The River Tiffey runs right through Wymondham's large parish. It offers a variety of landscapes, nature reserves, walks, green open spaces and other opportunities for leisure activities.

Much of the valley is of high landscape value, with a wealth of flora and fauna, and is easily accessible. Yet although the valley runs within a few hundred yards of the town centre, only a few people know it well. It's a natural asset for all to discover for themselves.

Entering the parish as a brook through Oxford Common and under the A11 bypass, the Tiffey skirts the Lizard open space and flows under the railway at Tifford Bridge on Station Road. It crosses Toll's Meadow nature reserve, joins the Bays River at the old A11 bridge, and passes through gardens and under Damgate Bridge to Becketswell, with fine views of the Abbey.

The Tiffey Valley Walk runs beside the river to Chapel Bridge, or by turning off and following the railway it leads through meadows into the Kimberley estate. Beyond the hall the river leaves the parish at Carleton Forehoe, flows through Wramplingham and joins the Yare below Barford.

The river and adjacent high ground must have decided the location of the original Wymondham settlement in Saxon times, and influenced the Benedictine monks who established the Abbey here and the Wodehouse family when they built the new Kimberley Hall in the early 1700s. So the Tiffey has played a part in more than 1000 years of Wymondham history, and much of the valley is still unspoilt today.

A Precious Natural Environment

Fresh water makes river valleys important wildlife habitats and movement corridors. We can help or hinder this. The establishment of a local nature reserve and ten county wildlife sites along the valley has guaranteed some protection, but industrial estates straddling the river show how easily the needs of nature can be ignored.

The valley offers a variety of habitats. Upstream the alluvial flood plain has ponds providing a home for great crested newts, toads and dragonflies. Toll's Meadow is an area of lowland fen with the endangered water vole resident, and the cemetery has nesting sites for birds and homes for bats.

Further downstream is a more extensive floodplain with grazing meadows either side. The river has fish to feed heron, kingfishers and, more recently, otters. Kimberley Park Lake attracts gulls and wildfowl.

The valley is a special habitat threading for five miles through Wymondham town and parish. It needs protection and the enhancement of its biodiversity along its ecological corridor. Council officers help with advice, volunteers provide conservation labour, and there are local volunteer wardens who watch over the valley from day to day, at Toll's Meadow and along the valley trails.



The Wymondham Nature Group

The Wymondham Nature Group (WyNG) is the local group of the Norfolk Wildlife Trust, a charity working to protect and enhance Norfolk's wild places for the benefit of wildlife and people.

You do not need to be an expert to join us but just have a passion for wildlife and the environment. We hold nine very entertaining and informative illustrated talks a year covering many and varied aspects of nature.

The meetings are held at the Town Green Centre, Wymondham on the 2nd Thursday of the month (September to May) at 7.30pm, entry is just £2 and everyone is most welcome to attend. We have our own colourful publication, SWIFT, which includes all manner of interesting sightings and observations and we also organise several guided walks throughout the year.

We have two teams of enthusiastic practical conservation volunteers who help manage Tolls Meadow, Wymondham's very own local nature reserve in the heart of the town, as well as Ashwellthorpe Lower Wood, our nearest Norfolk Wildlife Trust reserve.

New volunteers are always warmly received, no previous experience is necessary and work can be found for all levels of fitness. Recently, Tolls Meadow was dubbed one of the "Seven Wonders of Wymondham". As a fen meadow, a rare habitat, through which the River Tiffey flows, it provides a home to a whole host of interesting wildlife including the endangered water vole (our very own "Ratty" from "The Wind in the Willows").

There is a wide range of wild flowers, including orchid species, marsh marigold, meadowsweet and ragged robin which in turn attract all sorts of fascinating insects and birds. Maintaining the wealth of biodiversity in our area is of utmost importance to us and we engage with the local planning system to ensure wildlife is not overlooked. Why not join us and help safeguard our precious and beautiful environment? Find us on Facebook, follow us on Twitter, contact us by email wymondham@norfolkwildlifetrust.org.uk or speak to our Secretary Ann Carpenter on 01508 488337

Heritage Buildings & History

Most traces of pre-Conquest buildings are now long lost, but archaeological records document Roman artefacts and traces of a temple at Crownthorpe. Wymondham Abbey and Kimberley Hall are outstanding examples of the valley's built environment across the centuries. They illustrate contrasting aspects of historic wealth and power - the monastic community and the Norfolk landowner.

Ordinary people have also left their mark. Bridges are more substantial than unmetalled roads, and there are more than a dozen examples in the valley, some of them three hundred or more years old. Nineteenth century engineers gave us the railway which still runs through the valley to Kimberley, and they surfaced many of the roads we use today.

Like the ancient archaeological remains, Wymondham's two brush factories have vanished and only street names and museum exhibits remind us of them. Wood-turning provided the emblems for the old town badge, and weavers' cottages in Damgate and the town centre remind us of the other traditional town trade. Beyond that, little trace remains. Once lost, the built environment is gone for ever.

Green Wymondham Under Threat?

Wymondham has been fortunate in keeping much of its character as a thriving market town. It is rich in historic buildings and has an attractive green setting.

The demand for housing has seen the steady growth of new estates since the 1960s. More than 1,500 new homes have been built in Wymondham over the last ten years, almost all on green-field sites, and developers would like to build another 2,200 or more in the next decade.

SEE FITNESS RESULTS IN JUST

4 WEEKS



01953 606665



CALL IN NOW AND ARRANGE YOUR FREE GUEST VISIT

Ian's Disco Roadshow

Quality Discos that play what you want
at a venue to suit you

Any style of music - 60s, 70s disco,
80s, 90s,
Modern classics, Dance, Soul, R&B



Tel: 01953 609917

Mobile: 07881928066

E-mail: ian.myhill@talktalk.net

Keeley's **beauty** 

feel beautiful, look beautiful, be beautiful



**10% DISCOUNT WHEN YOU REFERENCE
'WYMONDHAM TOWN GUIDE'**

Manicures • Pedicures
Dermalogica Facials • Waxing
Eyelash Extensions • Eye Enhancement
Bio Sculpture Nails • Airbrush Makeup

CALL NOW ON 01953 601010

keelymoney_@hotmail.com

7 Whartons Court Wymondham NR18 0UQ





The Tiffey Trails Project

The Tiffey Trails project was first discussed by Wymondham Arts Forum in 2004 as a way to use the arts to promote and protect the valley's heritage. The project was launched in May 2006 after public consultation. Working in collaboration with many local organisations, it drew together a large and enthusiastic steering group of volunteers.

A sustained fundraising campaign realised an impressive £80,000 in grant aid and support in kind. The money was essential to the project, but without other advice and support the group would not have been able to undertake a project on this scale.

The principal aims of the project were to open up the countryside to a wide cross-section of the public; help protect the valley from encroaching development; conserve the heritage of the natural and built environment; provide a stimulus for local artists, craftspeople, musicians and writers; and offer local people the chance to work together to further their knowledge and show imagination in celebrating their heritage. Throughout 2007 and 2008 a full programme of arts and heritage events of all kinds, run in partnership with other local organisations, helped to publicise the valley and draw in visitors.

Although the project was drawn to a close in 2009, its legacy remains. The most tangible achievements were to produce a valley guide and map, still available from information points in the town, signposting and waymarking the valley trails, providing interpretive information boards and siting benches and other field furniture, decorated by a local woodcarver.

Two oak viewing towers were constructed, at the Lizard and Toll's Meadow. The valley has given a focus for exhibitions by local art and photographic societies and also by Wymondham Heritage Society. It has inspired some notable works of music, poetry and other writing, and visual arts and craftwork which will provide a lasting legacy.

The Complete Service

twgaze



Dist Auction Rooms



Residential Sales



Wymondham Office



Property & Farm Auctions



Comprehensive Valuation Service



Commercial & Residential Property



Residential Lettings



Licensed trade



Rural Business

33 Market Street, Wymondham,
Norfolk NR18 0AJ
01953 423 188

Dist Auction Rooms, Roydon Road,
Dist, Norfolk IP22 4LN
01379 650 306

twgaze.co.uk



Getting Into The Valley

Much of the valley is accessible on foot, often thanks to local initiatives and co-operation from landowners, but the full extent of the valley trails is not well known.

The valley guide and map relates footpaths and access points to the town centre and the local road system, and provides information to add interest to a valley walk. It is available from the Tourist Information Centre, the town library and at various points along the valley trails.

Public access to the valley has been greatly improved by installing more accessible stiles and gates and appropriately sited boardwalks, maintenance of footpaths and restoring and replacing information boards. Tiffey Trails waymarks show routes and entry points.

For a taste of what the valley has to offer, here are two short walks. For each walk, start from the Market Cross and go down Market Street past the Abbey to the railway crossing.

If you turn left just before the railway into Becketswell and follow the riverside walk you'll soon arrive at Damgate Bridge. Turn left and then right into Friarscroft, follow that road as far as the junction with Fairland Street, look left and you'll see the Market Cross. You'll have had a breath of fresh air and be back dry footed in 20 minutes or so.

Turning right at the railway will lead you to the Valley Walk. Follow the path for half a mile or so along the river, then turn left to cross the railway and river. In another half mile you'll arrive at Chapel Bell where there's a picnic spot near the road to Wicklewood and Dereham. It's best to retrace your steps at this point: returning along busy the road is possible but there are no footpaths so very great care is needed.

Do try to get out into the Tiffey Valley, and appreciate what a great asset it is to the town.

Toll's Meadow Warden: Paul Holley 01603 212343. Alternatively they may be contacted via the Town Council Offices on 01953 603302.

WYMONDHAM HERITAGE MUSEUM & 'THE BRIDEWELL' TEAROOM

Your local museum, telling the story of the building,
your town, the people, places and important events.

New for 2016

Come and see the exhibition celebrating
20 years of the museum.

The Bridewell, Norwich Rd, Wymondham,
Norfolk NR18 0NS - Tel. 01953 600205

Open Monday to Saturday
10am to 4pm, March - October

www.wymondhamheritagemuseum.co.uk



Number Twenty Four Restaurant

24 Middleton Street,
Wymondham

Excellent cuisine in relaxed surroundings

- fine dining, ambience and personal
service from Jonathan and Isobel

Large parties catered for

- *Superb Sunday Lunch menu*
- *Please call for details of forthcoming events*
- *Open for lunch Weds - Sun 12 - 2pm
for dinner Tues - Sat 7 - 9pm*

Telephone Booking Advisable

01953 607750

WYMONDHAM'S HOME FURNISHINGS

Jarrolds can offer **expert advice** and **great prices** on all aspects of home furnishings and
are very proud to have been part of the historic town of Wymondham since 1988



LINENS
HOUSEWARES
FURNITURE
CARPETS & RUGS
CURTAINS
COOKSHOP
UPHOLSTERY
SOFT FURNISHINGS
BEDS
MATTRESSES
LIFT & RISE
ELECTRIC CHAIRS
PLUS
CUSTOMER PARKING
CLICK & COLLECT



MIDDLETON STREET, WYMONDHAM
01953 603251
JARROLD.CO.UK

JARROLD

Wymondham Library

Your local library. It's free and easy to join.

- Escape in a book.
- Access free PCs and high-speed broadband
- Bring your children to story and rhyme times.
- Research your local history.
- Enjoy free events.
- Borrow the latest DVDs and console games

Address: Back Lane Wymondham NR18 0QB

Telephone: 01953 603 319

Email: wymondham.lib@norfolk.gov.uk

Website: www.library.norfolk.gov.uk

Opening Times

Monday: 9am - 5pm

Tuesday: 9am - 5pm

Wednesday: 9am - 1pm

Thursday: 9am - 7pm

Friday: 9am - 5pm

Saturday: 10am - 4pm



Stuart Wright Transport Ltd

MOT Testing Class 1, 2, 3 and 4

info@swtransport.co.uk
www.swtransport.co.uk

Office: 01953 604710

35 Penfold Drive, Wymondham, Norfolk, NR18 0WZ

Stuart Wright Tractors

A division of Stuart Wright Transport Ltd

Compact Tractors and Implements

info@swtractors.co.uk
www.swtractors.co.uk

Office: 01953 604710

35 Penfold Drive, Wymondham, Norfolk, NR18 0WZ

ME, WORRY? WHY?....
I'M IN AN OAKTREE UNIT



Quality premises for any business
large or small

Easy in, easy out terms

Full support & backup

Full maintenance package

The flexible way to lease premises

Oaktree Partnership

5a Allensbrook Way

Wymondham Norfolk

NR18 0NW

01953 600051

E: info@oaktreepremises.co.uk

www.oaktreepremises.co.uk

FLEXIBLE BUSINESS UNITS
Oaktree

J.R. EVANS

Waste Disposal

Hills End Farm,
Attleborough

Tel: 01953 451920

SKIP HIRE - 6 yds to
20 yds capacity
Garden Rubbish, Builder's
Rubble, Factory Waste

TIPPERS FOR HIRE
10 and 20 Tonners

Septic Tanks, Cov Pits

MERC-PRO LTD

- Mercedes Independent Specialist •
- Prestige Car Servicing •
- Diagnostics & Repairs •

01953 423 475

Unit 1a Wymondham Business Centre
Eleven Mile Lane NR18 9JL



There are a number of annual and one-off events that take place in and around Wymondham every year. To find out what's on in Wymondham, you can look in the following places:

Town Events Diaries

Events diaries are held and co-ordinated in the town library, the Tourist Information Centre, and in the About Wymondham newsletter.

Notice Boards

Both the library and the Tourist Information Centre have noticeboards for displaying local event posters, and there is a public noticeboard in the town centre under the old fire station arch off Market Street at the entrance to the car park.

Local Newspapers

The Eastern Daily Press

Published Monday - Saturday

Eastern Evening News

Published Monday - Saturday

Wymondham & Attleborough Mercury

Published every Thursday delivered free to local homes

There is also a separate noticeboard for arts and music events in the same place.

About Wymondham Newsletter

About Wymondham is a regular publication issued four times a year and is delivered to all the residents of Wymondham. Its aim is to keep residents informed of developments within the town, to promote forthcoming community events and to gather views from local residents.

Residents are encouraged to participate and any potential contributors should contact the Town Clerk on 01953 603302.

About Wymondham
The newsletter of Wymondham Town Council

Number 83 Winter 2015

The Town Council offices are situated at
14 Middleton Street
Wymondham
Norfolk NR18 0AD

Telephone
01953 603302

www.wymondham.norfolkparishes.gov.uk

Office opening hours:
Monday - Friday
9.30am - 4.00pm

In this edition:

Town Council News including	
• New Town Guide coming soon	1
• Valley footpath closes	1
• Back Farmers' Market	2
• Classes: Abbot's meek heifers	2
• Administrative staff vacancy	2
• Fubulum Confirmation completion	3

Community News including

• Service clubs fundraising	4
• 200 years of wine	5
• Calling all grandmothers!	5
• Abbey project completed	6
• Good year for Arts Centre	8

Abbey treasures displayed

Regular users of the Tiffy Valley circular walk through the field at the end of Frogshall Lane will know that this attractive and familiar footpath has now been closed.

Access through the meadows and across the river footbridge was via a discretionary path susceptible to closure at any time, and this route has now been withdrawn, the gate at the end of Frogshall lane closed and the river footbridge removed.

However, the longer riverside path from Bickeswell to Chapel Ball is still open. This is also a discretionary path and other discussions with the Town Council the two landowners involved have kindly agreed to continue this arrangement on an annual basis. They will arrange one maintenance visit early each summer, and if further cutting is needed the Town Council will arrange this.

As with all public access to the countryside users are reminded to observe the countryside code, with particular attention to controlling dogs and closing gates behind them.

Valley footpath closes

Abbey can now reveal treasures The Abbey extensions, now completed, will provide many more ways to engage the community with its rich resources, such as the timber chapel now on display under the West tower. See page 6 for story and pictures

New Town Guide coming soon

The latest edition of the much valued Wymondham Town Guide Year, and work is well under way to make it the best yet.

For the clubs and societies section, a great deal depends upon club secretaries to provide new or updated information, and to encourage new organisations to let the editor have contact details and some basic information about what they do. So please spread the word around and get that information coming in. Please contact **Joan Wills** at **joan@onepresspublishing.co.uk** by 31 December.

Look for this Mark on Fairtrade products
www.fairtrade.org.uk

Wymondham – the cultural heart of South Norfolk

Wymondham Music Festival

Promoting a summer of live music in
Wymondham incorporating Festival Fortnight

Saturday 2nd July to Saturday 16th July 2016

Saturday 1st July to Saturday 15th July 2017

Saturday 30th June to Saturday 14th July 2018

www.wymfest.org · Tel. 01953 333500



Norfolk County Council



Join us on



Wymondham Music Festival Reg. Charity no 1081375

Wymondham
arts
centre

A full programme of group and solo shows runs in historic Becketts Chapel, 2 Church Street, Wymondham, NR18 0PH from March to November. Free entry daily, but closed some Mondays to change exhibitions. The gallery encompasses a wide range of styles and media.

Wymondham words

Join us at South Norfolk's top literary festival! Enjoy meeting writers, prose and poetry readings, conversation and other book events held in town venues in September each year.

www.wymondhamarts.com

Wymondham Words and Wymondham Arts Centre are Wymondham Arts Forum projects.
Wymondham Arts Forum Registered Charity Number 1153188

Where can you enjoy a wide range of classical and jazz concerts, folk and roots gigs, street performances, a Teddy Bears' Picnic for our youngest families and the ever popular Midsummer Jazz Picnic, all on your doorstep?

All this and much more is on offer to Wymondham people every summer. Many events are free and others have affordable ticket prices with bargains for under-18s.

Born as Wymondham Music Week in 1996, Wymondham's modest bid to provide local music for local people has grown into South Norfolk's biggest and most successful annual arts event. The programme for Wymondham Music Festival, with its focus on Festival Fortnight in early July, lists over 70 live music events each year, nearly half of them organised by the Festival Committee.

The high quality Festival brochure represents a big investment of time and money. At its core are the 30 or so events of the Festival Fortnight but it also promotes the activities of local choirs, orchestras and music groups from April to December. It offers advertising space for businesses to promote themselves in the context of a successful community event.

The Festival has always tried to be accessible, which has helped it to grow widespread roots in our local community. It has no wish to run an elitist festival with high ticket prices and exclusive events. It wants to draw in ever wider audiences, and include more and more people who do not usually turn out to listen to live music.

Our core audiences are from Wymondham and its hinterland but visitors from outside the area increase each year and are an important boost to the town. The general economic benefit to the district is considerable – the committee spends around £25k each year on local goods and services – ranging from fees paid to local musicians and venues, to the design and print of publicity materials and hire of equipment.

Wymondham Music Festival is a charity with educational aims, and is an important 'community-builder' in a partially dormitory town where many residents can so easily live their lives elsewhere, to the detriment of local community spirit.

All this has helped the Festival to secure grants from local councils and charitable trusts. It also attracts generous support from local businesses, and from individuals who for a modest annual donation become patrons. This means that the Festival can be planned knowing that the cost of around £30k each year will be available from a range of income sources.

The Festival continues to grow in terms of overall numbers of people reached and the diversity of its programme. It needs to remain fresh and vibrant and evolve in response to the needs of our present and future audiences.

By 2018 we aim to extend this trend for growth by offering a programme that remains familiar but also pushes new creative boundaries. These are aspirations that require sustained commitment and people with imagination to bring to them to fruition.

If you have a love of music and skills and time to offer throughout the year we'd love to hear from you.

We arrange a public meeting in March each year – a perfect time to come along, find out more and share your views and in the meantime why not check out our website www.wymfest.org.uk and join us on Facebook?

Damgate Holiday Cottage

www.damgateholidaycottage.co.uk



King, Twin/Super-King & Single Room (Sleeps 3)

*Convenient Town Centre Location,
Close to Pubs and Shops*

Spacious, Warm & Comfortable Accommodation

Beams & Character Features Throughout

Ideal Base for all your Friends & Family

Free Parking

Call Now for Pricing and Availability

Pricing from £230 - £560 per week



Call Nigel on 01953 603413

13 Damgate Street, Wymondham, Norfolk

STUART GOODA CARPENTRY

30 years experience

Commercial & Domestic Carpentry & Products Inc:

Kitchen fitting • Door hanging (int or ext)

Bespoke joinery • Fitted wardrobes & cupboards

Window fitting • Fencing • Pergolas & Decking

Staircases • Shop fitting • Glazing

Loft conversions • Lock fitting & Lock replacements

Roofs (Traditional hand cut & trussed)

All home improvements inc. tiling & plastering

Laminate flooring • Property maintenance

A Member Of The Institute Of Carpenters

07768 503744 / 01953 600790

www.stuartgoodacarpentry.co.uk



Middletons

www.middletonsclothing.com

Quality Footwear & Clothing



Barbour, Hackett, Olymp,
Bruhl, Replay, Smedly,
Campione, White Staff,
Seasalt, Goubi, Capri,
Mudd & Water,
Steinmann, In-Town,
Brakeburn, Hatley,
Peregrine, Braintree
& many more.

Rieker, J-Shoes, Tamaris,
SoftLine by Jana, Riva,
Wortmann, Caprice,
Birkenstock, Riva, FitFlop,
Barbour, Heavenly Feet
& more.

21- 25 Middleton Street, Wymondham

Tel. 01953 607 518

www.facebook.com/middletonsclothing

Wymondham Arts Forum

Set up in 2001, the Arts Forum is now a Community Interest Organisation (charity registration number 1153188).

It devised and ran the Tiffey Trails Project (2006-09), and is the parent body for Wymondham Arts Centre and the Wymondham Words Literary Festival. It currently leases Becket's Chapel for arts purposes. More information from John Wood on 01953 602051.

Wymondham Arts Centre

A project of Wymondham Arts Forum, Wymondham Arts Centre opened in March 2009 in Becket's Chapel in Church Street, former home of Wymondham's library.

The Arts Centre arranges programmes of exhibitions from mid March to the end of November. The project is proving a great success, with 15,000 or more visits during the season. Exhibitors include artists with national and international reputations, local art societies, Wymondham schools and many individual artists from Norfolk and Suffolk. Artists are able to hold workshops in association with their exhibitions, and there is usually an opportunity for young and old to draw using materials supplied by the arts centre.

Discussions with other groups within the town and the Old Grammar School Foundation, which owns Becket's Chapel, have confirmed the Foundation's long-term ownership.

Current multi-group discussions are aimed at securing funding to rectify the structural condition of the building, so that it can also be one focal point to help understanding and appreciation of the rich cultural and material history of Wymondham

A free programme listing the exhibitions is available from the centre and from other information points in town from the end of February. Normal gallery hours are 10-5 Tuesday to Saturday and 12-5 on Sundays, closing an hour earlier when British Summertime ends. The gallery is closed some Mondays for changing exhibitions. Entry to the gallery is free. The Arts Forum website has details of opening days for each exhibition: www.wymondhamarts.org

More information from Bob Coe on **01953 859992**
mobile **07880 723074**

WYMONDHAM MOTORIST CENTRE

Window
Wiper Blades
Fitted
FREE!

MON TO FRI : 9am - 5.45pm

SATURDAY : 9am - 5pm

SUNDAY : 10am - 1pm



12-14 MARKET STREET, WYMONDHAM NR18 0BB

WYMONDHAMMOTORISTCENTRE@HOTMAIL.CO.UK . TEL. 01953 604704

ALSO AT : STRATTON DISCOUNT AUTO PARTS , CHANDLER HOUSE,
LONG STRATTON, NORFOLK. NR15 2XJ · TELEPHONE 01508 531072



Wymondham
Music Festival
Highlights



Standley Steel Stockholders

Mild Steel • Stainless Steel • Aluminium
In all types of section

*General fabrication in all metals • Sheet metal fabrication • Full cutting facilities for one offs and batches
From design to completed project • Experts in fabrication for housing Construction
CE approved steelwork fabricators • Fast and efficient delivery service throughout East Anglia*



VALLEY VIEW WORKS, LONDON RD, NR18 9JD
TELEPHONE : (01953) 602116
sales@standleysteel.co.uk • www.standleysteel.co.uk

TH

TownHouse Hotel

28 Market Street, Wymondham
Norfolk, NR18 0BB
01953 606721

www.townhouse-hotel.co.uk
info@townhouse-hotel.co.uk

Long Term Rooms
& Rates Available

footsure 

Dedicated To Foot Health






Whartons Court 01953 425825
Wymondham info@footsureuk.com
NR18 0UQ www.facebook.com/footsureuk

PODIATRY CHIROPODY FOOTWEAR

PODIATRY

HCPC registered podiatrists



-  corns and callus
-  nail cutting
-  biomechanical assessment
-  diabetic foot health
-  laser treatment of fungal nails

FOOTWEAR

We also offer a range of high quality footwear for men and women, orthotics (insoles), socks, and other items.

Wymondham Words

The newest project from Wymondham Arts Forum, Wymondham Words, is Wymondham's literary festival, catering for local people with interests in literature of all kinds, as readers or as writers. It was launched in September 2010 and continues to develop. In 2015 it offered 10 days of poetry and prose readings, discussions with authors, a creative writing workshop, a literary lunch, drama and music and a programme of children's activities. Although Wymondham Words has local roots, visiting writers come from all over Norfolk and Suffolk and beyond to take part.

Wymondham poet George Szirtes (pictured) is the festival's Patron and was a prime mover in establishing Wymondham Words. The enthusiastic support shown by other published writers living in the Wymondham area suggests that Wymondham Words is likely to develop strongly over the next few years. There are many local book and reading groups meeting locally, and at least one creative writing class has grown out of the festival.

More information is available on the Arts Forum website: www.wymondhamarts.com

More information from Moniza Alvi on 01953 859992 or John Wood on 01953 602051.



Sing Your Heart Out

Sing Your Heart Out is an organisation dedicated to introducing people to singing in a group. You don't have to have a good voice and there is no need to read music. We particularly welcome mental health service users, their friends, family, staff and carers, as well as other singers from the local community. There is no charge, though donations are always welcome.

Since we started, hundreds of people have been through the door, some staying for a while, others more permanently. Singers have gone on to join other community choirs, found the confidence to go back to work or become involved in the community in other ways.

Come and find out how singing can give you a lift and improve your mental well-being! Workshop sessions are currently held on Tuesday mornings at the Connaught Bowls Club in Attleborough. Details of dates, times and venues are on our website at www.syho.org



FREE CALL OUT
ADRIAN DAWES

Formerly Dennis Eaglen

33 YEARS EXPERIENCE

Domestic Appliance Repairs

- Washing Machines
 - Cookers
 - Tumble Dryers
 - Zanussi Specialists
- & Most Leading Makes**

07885 706509
01953 603195

www.adriandawes.co.uk

Scruffy 
2 Fluffy
 Professional Pet Grooming

Free Puppy Training Grooms

Simple Treatments / Spa Treatments

Quick Bath Treatment

Quick Trim Treatment

Full Groom • Full Day Treatment

07565 491248

38a Fairland Street
Wymondham NR18 OAW



www.scruffy2fluffy.co.uk

Venues For Hire Within Town Centre

Abbey Hall	Church Street	Contact: C. Buckton	01953 602108
Bridewell Resource Centre	Room 1 : 50 seats Room 2 : 6 seats	Contact: Rosemary Charles rec@carolus.org.uk	
Catholic Hall	100 seats	Contact: Flora Leone	01953 601976
Central Hall	295 seats	Contact: Mike Beame	01953 608009
Tiffany Room	60 seats	Contact: Mike Beame	01953 602261
Ex-Servicemen's Club	250 seats	Contact: Club	01953 602261
Fairland Church Centre	120 seats	Contact: Jill Brown	01953 603979
Fairland Hall	100 seats	Contact: Jill Brown	01953 603979
Town Green Centre	Choice of 3 halls	Contact: Jeanette Baker	01953 603852
Town Council Chamber	20 seats	Contact: Town Clerk	01953 603302
Wym. High Sch. North Hall	299 seats	Contact:	01953 602078
Wym. High Sch. (various)	30+ seats	Contact:	01953 602078
Wymondham Town FC	60 seats	Contact: The Club House	01953 607326
The Hub, Ayton Rd. NR18 0QJ	Choice of rooms	Contact: Hope Community Centre	01953 798505

Venues For Hire Outside Town Centre

Ketts Park Centre	250 Seats	Contact: Town Council	01953 603302
North Wymondham Community Centre	100 Seats	Contact: Ann Barnes	01953 605233
Spooner Row Village Hall	125 seats	Contact: Michelle Hunter	01953 604107





wherever, wenn-ever...

SKIPS FOR HIRE MINI-MIDI-LARGE

- Competitive prices
- Reliable service
- Most areas of Norfolk covered

Call: 01603 881292



**Premier
Control
Technologies**

Flow, pressure, level & temperature solutions



UNIT 1 OAKTREE BUSINESS PARK,
PHILIP FORD WAY, WYMONDHAM, NR18 9AQ
SALES@PCTFLOW.COM · WWW.PCTFLOW.COM
TEL: +44 (0)1953 609930 · FAX: +44 (0)1953 713883

Self-catering accommodation at Cobweb Cottage

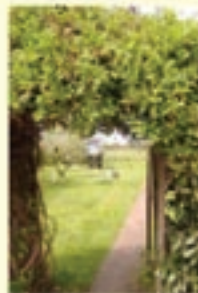
- o Reasonably priced self-catering accommodation in a rural setting
- o Single and double non-smoking accommodation
- o En-suite rooms, equipped for light self-catering
- o Just off the A11, close to rail connections. Easy access to Norwich, close to the Suffolk border
- o Pets and children welcome
- o Off-road parking
- o Use of the garden
- o Short walk to excellent village pub
- o Close to the historic market town of Wymondham with its Abbey dating back to 1107



Contact: Lindsay Dowding

Phone: 01953 607236
Email: lindsay36@tiscali.co.uk

Cobweb Cottage
42 Queen's Street
Spooner Row
Wymondham
NR18 9JU





By Car

Wymondham is situated just off the A11, nine miles south-west of Norwich. There are car parks off Market Street and Back Lane, and at Central Hall and Town Green.



By Rail

National Rail. Wymondham Station is on the Norwich to Ely and Cambridge Line, and the Norwich to Peterborough line.

Tel: 03457 484950 (National Rail) • www.nationalrail.co.uk
www.nationalexpresseastanglia.com • www.eastmidlandstrains.co.uk

Mid Norfolk Railway runs the heritage railway from Wymondham Abbey Halt to Dereham. Telephone: 01362 690633 • www.mnr.org.uk

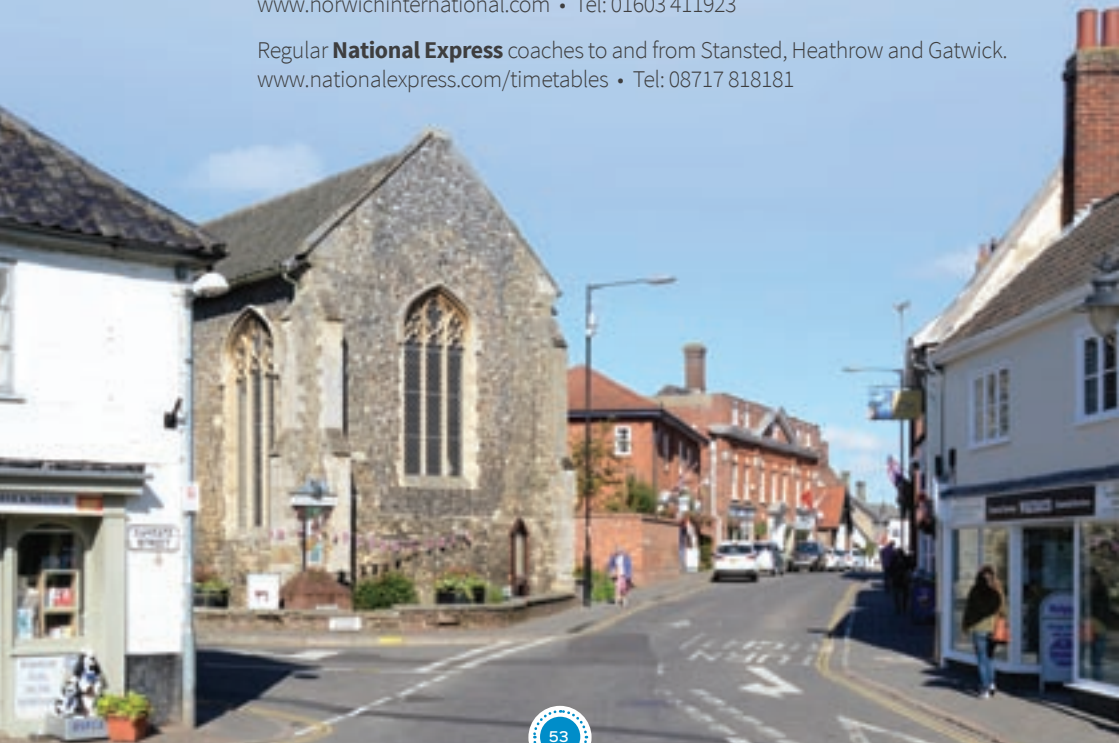


By Air

Norwich International Airport

www.norwichinternational.com • Tel: 01603 411923

Regular **National Express** coaches to and from Stansted, Heathrow and Gatwick.
www.nationalexpress.com/timetables • Tel: 08717 818181





Your **No. 1** local Motor Engineers

- MOT Testing Station
- Diesel & Catalytic
- Servicing all Models Inc Motor Homes
- Welding Specialists
- Electronic Diagnostics
- Air Conditioning



Retail Motor
Industry
Federation

Mon - Fri 8.30am to 5.30pm
Sat 8.30am to 12.30pm

T: 01953 602691

Postmill Garage Wymondham Ltd.

Unit 4, Chestnut Drive, Wymondham Business Park, Wymondham, NR18 9SB
www.postmillgarage.co.uk

ALSO AT

ANGLIA AUTO CENTRE



POSTMILL GARAGE LTD

**MOT TESTING STATION
DIESEL & CATALYTIC
SERVICING ALL MODELS
WELDING SPECIALISTS
ELECTRONIC DIAGNOSTICS
AIR CONDITIONING**



Retail Motor
Industry
Federation

OPEN MONDAY TO FRIDAY 8.30AM - 5.30PM

TEL. 01603 759501

**COCK STREET, BARFORD, NORWICH NR9 4BD
WWW.ANGLIAAUTOCENTRE.COM**

By Bus

For full details of bus services and pick up points, call Traveline on 0871 2002233. www.traveline.org.uk

Printed timetables are available at Wymondham Tourist Information Centre or contact Norfolk County Council Passenger Transport Unit.

Telephone: 0344 8008020
www.norfolk.gov.uk/travel

Regular services connect Wymondham with Norwich, Attleborough, Thetford, Watton and Bury St. Edmunds. Service 59 operates Wymondham and the Norfolk and Norwich Hospital.

The Flexibus service links 28 villages surrounding Wymondham with the town. To book a journey call 0344 8008020 before 4pm on the day before departure. The Flexibus provides a door-to-door service.

Email : information@norfolk.gov.uk



By Taxi

M&M's

Tel: 01953 600779
Mobile: 07833 392647

Station Taxis

Tel : 01953 600007

Tan Cars

Tel: 01953 602693





Norfolk Primary Care Trust

Norfolk Community Health & Care

NHS Trust

Elliot House 130 Ber Street
Norwich, Norfolk, NR1 3FR
Telephone: 0800 088 4449
www.norfolkcommunityhealthandcare.nhs.uk
pals@nchc.nhs.uk

GP Practices

Find out information relating to your local GP practice with links to their website where available.

Health Watch

Keep track of all the latest news from Health Watch – Norfolk's unique public/patient health forum.

Patient Links

Patients are the reason why we are here, and this section is devoted to useful website links for our patients such as health advice and sites dedicated to specific diseases.

Partners

Information about our partner agencies and links to their websites.

Health Policy

Access PCG documents and find links to the NHS websites to access national policy documents.

Ogden Court Community Hospital

60 Ogden Close
Wymondham Norfolk NR18 0PE
Telephone: 01953 605060

NHS Choices

Visit : www.nhs.uk

Chemists

Well Wymondham

47 Market Street Wymondham
NR18 0AJ
Telephone: 01953 602115

Boots Pharmacy

Wymondham Medical Centre
Postmill Close Wymondham NR18 0RF
Telephone: 01953 601772

Dentists

Market Place Dental Practice

Bridewell Street Wymondham NR18 0AR
Telephone: 01953 601801

Queen Street Dental Surgery

3 Queens Street Wymondham NR18 0AY
Telephone: 01953 602753

John G Plummer and Associates

Wymondham Medical Centre
Postmill Close Wymondham NR18 0RF
Telephone: 01953 601501

Peppermint Dental

189 Norwich Road Wymondham
NR18 0SJ Telephone: 01953 603360

Doctor's Surgeries

Wymondham Medical Centre

Postmill Close Wymondham NR18 0RF
Telephone: 01953 602220
Fax: 01953 605313

Windmill Surgery

London Road Wymondham NR18 0AF
Telephone: 01953 607607
Fax: 01953 606482
www.windmillsurgery.co.uk



Wymondham Medical Centre

Wymondham Medical Centre

(Community Health)
18 Bridewell Street
Wymondham NR18 0AR
Telephone: 01953 602220

Services Provided:

District nursing; Health visiting and school health services; Occupational Therapy; Speech and Language Therapy; Physiotherapy; Dietetics; Podiatry; Volunteer co-ordinator; Orthoptist; Cognitive Behaviour Therapy.

Child Health Clinic: Thursdays 2pm – 4pm



National Far East Prisoners of War Memorial Church

The Books of Remembrance can be seen in the Memorial Cabinet in the Memorial side chapel. They record FEPOW and civilian internees who died in captivity. A new book is available for FEPOW relatives.

**Our Lady and St Thomas of Canterbury,
Roman Catholic Church, 1 Norwich Road.**

Telephone FEPOW Enquiries

Hon Arc : Peter Wiseman 01953 604144

administrator@wymondham-rc-church.org.uk

**For other information contact the Parish Priest
01953 603194. Priest day off on Mondays**

www. wymondham-rc-church.org.uk



Hub Community Project

Telephone: 01953 798505

Email: info@hubproject.org.uk

Website: www.hubproject.org.uk

The Hub, Ayton Road, NR18 0QJ

Staffed by a team of dedicated volunteers Hub Community Project is passionate about strengthening the local community by the provision of facilities, assistance and practical support.

Current projects include:

Hoppers - Mother & Toddler groups.

Contact : Sue Latham, 01953 604232

Cup of Caring - Support group for carers

Contact : Libby, 01953 605928

libby.creber@gmail.com

**Meeting Point - Support group for those feeling lonely
Roman Catholic Church, Norwich Road**

Contact : Linda, 01603 812619

linda.bradbeer@lineone.net

The Zone - Support group for families

Contact : Sarah, 07428 005074

The Space - After school youth drop in session

3:15pm - 5:15pm, thursdays during term time.

Open to all secondary aged youth.

Contact : 01953 798505



Fairland United Reformed Church

Telephone: 01953 609971
Email: secretary@fairlandurc.org.uk
Website: www.fairlandurc.org.uk
Fairland Green, Fairland Hill, NR18 0AW

A welcome community of God's people, meeting for worship at 10.30am every Sunday. Our hall is a useful community building available to groups for hire.

Wymondham Methodist Church

Contact: Rev Jacqui Horton
Telephone: 01953 609106
Email: jacqui.horton.work@gmail.com
Website: www.wymondhammethodist.org.uk
Town Green, Wymondham, NR18 0PN

A choice of the three different halls, two kitchens and toilet facilities that make up the Town Green Centre (built onto the church in recent years) is available to outside hirers.

Situated in the heart of Town Green, the church offers a range of traditional, all-age, reflective and alternative worship services, as well as a warm welcome from a friendly and community-minded church family.

We welcome enquiries about christenings, weddings and funerals, as well as enquiries about the Christian faith and/or Methodist heritage.



Wymondham Abbey

Wymondham's 'heritage jewel' is now better than ever, following a £2.7M development in 2015.

Two extensions were added to the east end of the church featuring much needed new facilities, including an activity area for school visits, meeting rooms, space to display items from the Abbey's archive, colourful interpretation about the Abbey's story, toilets and a servery.

The great West Doors, closed for 50 years, were re-opened and are used on special occasions. The South Aisle, once hidden by an ugly 'temporary' vestry (actually erected in 1903!) has been restored. Wymondham Abbey is a 'must' for a visit.

Wymondham Abbey is the town's Anglican parish church. We have services every day of the week, with a variety to suit everyone. The church also hosts many other events and activities, both sacred and secular. Our website gives all the details.

Our Sunday services are: 08:00 Communion (Book of Common Prayer); 09:15 Contemporary Communion; 10:30 Sung Eucharist (with robed choir); 18:30 Evensong (choral evensong on 1st Sunday of the month).

Contact: The Abbey Office
Phone number: 01953 607062
Email: office@wymondhamabbey.org.uk
Website: www.wymondhamabbey.com
The Abbey, Church Street, NR18 0PH

Catholic Parish of Our Lady & St. Thomas of Canterbury

Parish Priest Father Michael Ryan
1, Norwich Road , NR18 0QE
officeadministrator@wymondham-rc-church.org.uk

Catholic parish serving the communities of Wymondham, Attleborough, Hetherset, Hingham and Mulbarton.

Weekend Mass times
Saturday: 6:00pm Wymondham
Sunday: 8:30am Attleborough,
Methodist Church
10:00am Wymondham

Holy days of obligation: 7pm
For weekday Masses: see newsletter
FEPOW Memorial Chapel
The Church is closed on Mondays.
Call 01953 603104





Wymondham Baptist Church

For over 200 years Wymondham Baptist Church has been opening our doors to all the Wymondham community - on Sundays and every day. Church records show that during all our history we have been here to worship together and to share what we have in order to show God's love. Records even show that in the late 19th century we bought a corset for one of the members!

Throughout the year, our commitment to the community in all their stages of life continues today, as we run and welcome in a number of groups. Every week (term-time) we run a popular and long-running baby and toddler group, and our counselling service has over the years helped more than 900 clients from the Wymondham area. In addition, we have the privilege of sharing our space with the Wymondham Music Festival, and we feature live brass music during the town's December Dickensian evening. Our slightly quieter activities include sharing space with groups such as the Stroke Association, a lip-reading class, and the Guides, and sending our members to Norwich to serve soup and sandwiches to the homeless.

Our services are relaxed but reverent, with our congregation made up of people from a few years old to 98!

A number of our members are experienced in supporting mental and physical disabilities, and we offer home groups so that our members can have a more personal experience of studying and growing together with people like them. Our building is equipped with two baby changes, and we offer a crèche for all Sunday morning services.

All are very welcome to join us. On Sundays we meet at 10.30am at the historic church building on Queen Street in the town centre.

Mr. Paul Smith
Telephone: 01953 606520
Website: www.wymondhambaptist.org
Email: office@wymondhambaptist.org
**Address: Queen Street,
Wymondham, NR18 0AY**





The Alive Church Wymondham

God has an amazing plan for Wymondham! He has given us the opportunity to be involved in that plan by showing His love and grace to the people we meet. We believe that one day Wymondham will be known as a place where God is doing amazing things, where people are accepted, transformed, healed and set free. Our priority is to build people into strong Godly men, women and children, full of His Holy Spirit. This will provide the foundation for what God wants to do.

We also believe God has a plan for your life and we would love to help you discover the things He has for you. Jesus not only came so that our sins could be forgiven He came that we may have life and life in all its fullness. (John 10:10, The Bible)

We meet at Wymondham Central Hall, 10am every Sunday and we would love to meet you. You are welcome to visit anytime.

Please visit the Wymondham page of our website www.alivechurch.org.uk and view our brochure which will provide you with more details of the things we are involved in and what happens during the week.

If you would like to speak to someone contact Barry on 07791 088761 or email barry@alivechurch.org.uk

Wymondham Local Quaker Meeting

Contact: Mrs Ann Parr
Telephone: 01953 600168
Website: www.quaker.org.uk
Address (for correspondence):
11 Downham Crescent, NR18 0SF

All are welcomed for worship at 10.45 - 11.45am on Sundays at The Frank Bunn Rooms, Town Green Centre, Town Green (at the back of the Methodist Church). Quakers share a way of life rather than a set of beliefs. We seek to experience God directly, within ourselves and in our relationships with others and the world around us. These direct encounters with the Divine are where Quakers find meaning and purpose.



Hope Community Church

Leader: Grantley Watkins
For times and venues contact: Church Office
Telephone : 01953 798505
office@hccw.co.uk • www.hccw.co.uk



Services at Hope Community Church are lively and relevant to 21st Century life. Hope meets at 10.30am on Sundays at Wymondham High School (Folly Road entrance). Sunday children's work uses an innovative approach where children are involved in a variety of activities including games, drama and craft.

Weekly activities include:

Ignite Youth Group (School Years 7 — 12), Mondays 7pm

Alpha & Freedom in Christ courses are run throughout the year.

Real IRONMONGERS

Real SERVICE

Real VALUE

WHERE ELSE?



Hardware & Tool
Specialists since 1875
01953 602104

Fairland Street, Wymondham

Also

24-7 Locksmith Service

Out of hours phone

07799 897534

and Engraving and Trophies Service

Hi-SPAN cold rolled products

Manufacturing in Wymondham since 1962



www.hi-span.com



NORFOLK SPORTING GUNS

Stocking Everything You Need &
A Comprehensive Repair Service Including:

- Clothing, Guns, Accessories
- Fully Trained Staff • Personal Service
- Bespoke Guns Made • Air Rifles
- Trade In Service • 30 Years Experience
- Ample Parking Right Outside Our Door
- Only 10 Mins From Norwich (A1)

01953 605517

www.norfolk-sporting-guns.co.uk

18a Market Street, Wymondham,
Norfolk NR18 0BB

PROTECT YOUR HOME OR BUSINESS WITH

 **MILES BETTER**
SECURITY

- Accredited Locksmith:
Fit, Repair or Replace
- CCTV Security Cameras
- Alarm Systems Fitted
- Access Control



**Business, retail and
home security** in
Wymondham and
surrounding areas



CALL ANDY NOW:

07949 983354 or 01603 396010

Find out more at www.milesbettersecurity.co.uk

Fixed Pricing | No Call-Out Charges | Fully Insured





connecting the community...

Community Activities Supporting Family Life



Hoppers Toddler Groups

Weekly in Wymondham, Barnham Broom & Wicklewood



Dads' Hoppers – For dads and their children under 5
2nd Saturday morning of the month at The Hub



Cup of Caring – For carers & their cared for
2nd and last Thursday mornings of the month at The Hub



Meeting Point – For the lonely & isolated
Friday mornings at the Catholic Church, Wymondham



The Zone – For families with primary aged children
First Saturday morning of the month at The Hub



The Space – After school youth drop in School Years 7+
Thursday afternoons during term time at The Hub



ESOL – Free English Lessons for Speakers of Other Languages
Tuesday evenings at The Hub

For more information contact:
Hub Community Project
The Hub, Ayton Road, Wymondham, NR18 0QJ
Tel: 01953 798505 Email: info@hubproject.org.uk
Website: www.hubproject.org.uk

Registered charity number: 1131480

Education

This section includes information about the local Pre-Schools and Playgroups, Primary Schools and Secondary Schools in the Wymondham area, along with other educational organisations in the vicinity.

All the schools welcome contact with prospective parents and carers. For further details and a copy of the current school prospectus, please contact the head teacher at the number given. Copies of the most recent OFSTED reports for each school are held in Wymondham Library.



Pre-School Playgroups

Abbey Kindergarten Pre-School

Kett's Park Centre
Contact: Jacqui Janion Tel: 07941 284143

Bouncing Beans Children's Nursery

197 Norwich Road, NR18 OSJ
Tel: 01953 857311
www.bouncingbeanschildrensnursery.co.uk

Busy Bees Nursery

Browick Road
Contact: Tara Smith
Tel: 01953 601538

Hoppers Mother & Toddler Groups

The Hub, Ayton Road, NR18 0DJ
Contact: Sue Latham
Tel: 01953 604232
www.hubproject.org.uk

Mulberry Bush Day Nursery

Norwich Common, Wymondham
www.mulberrybush.org
st.edmunds@mulberrybush.org

Spooner Row Acorns

Spooner Row School
Contact: Bridget Hanton
Tel: 01953 603356

Stepping Stones Pre-School

Catholic Hall, Wymondham
Contact: Mrs Sam Standley
Tel: 07787 550462



Ashleigh Primary School & Nursery

Ashleigh Primary School and Nursery provides quality education within a happy, caring and exciting environment. Learning is fun and purposeful, and makes the most of children's natural curiosity. The open culture and warm atmosphere support good spiritual, moral and social development.

The school provides outstanding care, guidance and support at every opportunity. The inclusive and positive ethos encourages above average attendance. Attainment has been significantly above the national average for the last four years. The school works exceptionally well with parents and carers.

Parents and carers indicate unanimously that their children enjoy school and are prepared well for the future.

Head: Mr Sam Nixon
Telephone: 01953 602410
office@ashleighprimary.norfolk.sch.uk
www.ashleighprimary.com
Sheffield Road, Wymondham, NR18 0HL
Pupils: 56 in nursery, 264 in main school

Browick Road Primary School

Our school, rated outstanding by Ofsted, is located in the heart of Wymondham. We are proud of the school's long history, opening in 1876 as the town school. We place great emphasis on children being happy and safe in school as happy children are motivated to learn. We have a well resourced, spacious learning environment which includes a large field, playground, adventure play area, allotment and wildlife area. We also have a specialist resource base for children with communication difficulties.

Teachers are supported by teaching assistants in all classes and year groups work in teams to provide a creative curriculum for the children. We have a wide range of extra-curricular activities too.

BusyBees Playgroup is also on site and enjoys the school's facilities. Kaleidoscope childcare service is also on site. It runs a breakfast club, an after school club and holiday childcare. Visits are welcomed; please telephone to make an appointment.

Head: Pauline McMullen
Telephone: 01953 603061
office@browickroad.norfolk.sch.uk
www.browickroad.norfolk.sch.uk
Browick Road, Wymondham, NR18 0QW
Pupils: 244





Spooner Row Primary School

Spooner Row is a small, friendly, traditional village school, situated about three miles from Wymondham centre, on the edge of Spooner Row village. It has strong links with the Spooner Row Acorns pre-school group, which shares its site.

Although it has an attractive Victorian foundation, the school's buildings and facilities have been extensively adapted over the years to meet the needs of modern life in a primary school.

Teaching is organised in four teaching groups, which vary in size and composition according to pupil numbers. The outside play space includes a playground and a conservation and wildlife garden.

Acting Head: Bridget Hanton
Telephone: 01953 603356
office@spoonerrow.norfolk.sch.uk
www.spoonerrowprimary.co.uk
Station Road, Spooner Row,
Wymondham, NR18 9JR
Pupils: 104

Robert Kett Primary School

The Staff and Governors at Robert Kett Primary School work together to provide the best education for your children and occupies an attractive and well-maintained site with good facilities.

We have an exciting curriculum that we hope engages every child actively with their learning.

We are focusing on developing children's learning skills and habits through our 5 R's: resilience, responsibility, resourcefulness, reflection and reasoning.

Our vision is for all children to be healthy, happy and safe – to achieve and feel valued.

Other key strengths include the school's provision for children with special educational needs, the wide range of extra-curricular activities offered, and the school's strong community links; pupils play an active role in Wymondham.

Robert Kett Primary School
Head: Mrs Alison Clarke
Telephone: 01953 603405
office@robertkett.norfolk.sch.uk
www.robertkett.norfolk.sch.uk
Hewitts Lane, Wymondham, NR18 0LS
Pupils: 593





**Kaleidoscope is an out of school club
for children aged**

**4-11 years. We are play based
childcare providing a breakfast, after
school and holiday club which is set
in a safe and secure environment at
Browick Road Infant School,
Wymondham.**



**Huge range of activities, toys and
days out!**

**Friendly, qualified & CRB checked
staff**

**Contact us on: 07884 187967
Or**

Kaleidoscope-osc@hotmail.com

Bouncing Beans Children's Nursery

The first years of a child's life are very important. Our friendly and qualified team create a happy, safe and caring environment for the children, promoting the all round development of each individual child. We are registered with OFSTED offering a high quality of professional care for children aged between 12 months and 5 years in a bright, colourful and stimulating environment.

**Open Monday to Friday 8.00am - 5.15pm
with the option of Morning, Afternoon and
All-Day sessions.**

We offer temporary holiday care to suit your needs, subject to availability.



Proprietor:
Sara Jane Heald

187 Norwich Road,
Wymondham, Norfolk, NR18 0LJ
(Just minutes from the A11 bypass
near Watton, Wymondham)

www.bouncingbeanschildrensnursery.co.uk

For more information
and a prospectus
please telephone: 01603 807311
or visit our website

Hethersett Old Hall School

Independent day school for girls 3-18 and boys 3-11 with boarding for girls from 9



Small classes, wide horizons

www.hohs.co.uk | enquiries@hohs.co.uk | 01603 810390

Wymondham High Academy

Welcome to Wymondham High Academy, an 11-18 co-educational Academy specialising in the Arts and Sciences.

Currently there are 1586 students (with over 360 students in the Sixth Form) on roll. We are proud of the high standards reached by all members of our community and our focus is on raising standards and creating opportunities for all our students.

Our ethos means that all aspects of the curriculum are valued and celebrated, with a focus on raising student's awareness of how they can flourish and develop towards adulthood. Our students developed our simple core purpose... inspiring excellence.

Principal: Mr Russell Boulton
Telephone: 01953 602078
office@wh-at.net
6th Form: hoggs@wh-at.net
www.wymondhamhigh.co.uk
Wymondham High Academy, Folly Road,
Wymondham, NR18 0QT
Pupils: 1586





*Mulberry Bush Day Nursery
at St Edmunds*

Norwich Common
WYMONDHAM
Norfolk
NR18 0SP

CONTACT:
01953 603792 or
st.edmunds@mulberrybush.org
Find out more at:
www.mulberrybush.org

**QUALITY DAYCARE
AND NURSERY EDUCATION**
for children aged 3 months to 5 years
Open 8am to 6pm all year round
Just off the A11 in the market town of Wymondham

**A converted chapel and purpose-built bungalow
with garden and orchard**

Caring, qualified staff
Excellent facilities for learning through play
A 'home-from-home' environment

Bungalow available to hire for children's parties



WYMONDHAM COLLEGE

**TOP PERFORMING STATE SCHOOL
IN THE EASTERN REGION**

OPEN DAYS

**BOARDER
TASTER EVENING**
11 MARCH 2016
FROM 5.45PM

Register for this event on
marketing@wymondhamcollege.org

**MAIN SCHOOL
OPEN MORNING**
12 MARCH 2016
9.00-11.00AM

enquiries@wymondhamcollege.org | 01953 606000 | www.wymondhamcollege.org

Norfolk Adult Education Service

The long standing provider of adult learning in the Wymondham and Attleborough area, Norfolk Adult Education offers a wide range of courses. Most take place in the evening, though some courses also take place during the day at various centres in Wymondham and Attleborough, and in venues in the surrounding villages.

Telephone: 0344 800 8020
www.norfolk.gov.uk/adulteducation

U3A

Contact: John Dollimore
johndollimore4r@gamil.com
Contact: Georgette Vale, 01953 605434
georgette@valemail.eu

WEA: Workers' Educational Asso.

WEA (Workers' Educational Association) is the UK's largest voluntary sector provider of adult education. Wymondham Branch runs two courses a year plus occasional Day Schools. The courses are of general interest and are delivered by expert tutors in a friendly environment. No previous knowledge or qualifications are needed, only a willingness to share with others your curiosity, ideas and experiences.

WEA Wymondham Branch
Secretary: Ros Krieger
Telephone: 01953 600639
rkrieger@talktalk.net

Wymondham College

Wymondham College is the largest State Boarding School in the country, educating around 650 boarders and a similar number of day students, set amongst 84 acres of rural Norfolk countryside.

The College secured 'Outstanding' judgements from Ofsted in both the last education and boarding inspections. Beyond the academic school day over 70 regular weekly clubs and societies are available together with over 700 annual sporting fixtures, an active Cadets unit and the Duke of Edinburgh Award Scheme.

High quality education with first class facilities is free for day students and with boarding fees at under £10,000pa, Wymondham College offers a very attractive alternative to private schooling. College students have just achieved the highest A Level results in recent memory with 83% gaining A-C Grades and 7 securing places at Oxbridge this summer. At GCSE over 72% exceeded the Gold standard (A*-C including English and maths).

After the results this summer the College was named as the highest performing state school in the region and the recently published 2015 Sunday Times school league table have rated the College as one of the top 50 highest performing state schools in the country! Additionally the Sunday Times puts Wymondham College in the top 200 of all schools nationally, including selective schools.

In recent weeks the College has been awarded World Class School status, in recognition of the extraordinary opportunities offered to our students and the work they do beyond the classroom.



Principal : Mr Jonathan Taylor
Telephone: 01953 609000
enquiries@wymondhamcollege.org
www.wymondhamcollege.org
Golf Links Road, Morley,
Wymondham, NR18 9SZ
Pupils: 1500



Wymondham Dementia Support Group

Wymondham Dementia Support Group is a charity formed in 2008 to 'Promote the well-being of those with dementia and their carers in the County of Norfolk'.

We seek to meet that objective in a number of ways – our main service is a weekly dementia café which meets at Fairland United Reformed Church in Wymondham every Friday. A wide range of activities are available in the Church Centre and adjacent Church Hall including a Carers Support Group: Sports and Leisure Activities: Art & Craft: a Poetry Group: a Singing Café once a month: a Library and Information hub and friendly social support whilst enjoying coffee and refreshments.

In addition we have a dementia friendly cinema, The Pabulum Picture Palace, which shows full length feature films in the Church Centre on the third Tuesday of each month. We are also developing a dementia friendly garden alongside The Church Centre with raised flower and vegetable beds and seating to enable those with dementia and their carers to enjoy by planting their choices in a safe and supported environment.

No formal referral is necessary and anyone interested in attending or volunteering should contact the Organiser, Dianne Fernee on 077127 27897. For more detailed information please visit our web-site www.wymondham-dementia-support-group.org.uk



Support & Recreational

Cup of Caring

Support group for carers
The Hub, Ayton Road, NR18 0QJ
Contact: Libby, 01953 605928
libby.creber@gmail.com

Meeting Point

Support group for those feeling lonely
Roman Catholic Church, Norwich Road
Contact: Linda, 01603 812619
linda.bradbeer@lineone.net

Greening Wymondham Group

Promoting environmental projects and sustainability in Wymondham
Contact: Ann, 01953 606127
greening.wymondham@gmail.com

Keeping Abreast

Breast Cancer Reconstruction Support Group
www.keepingabreast.org.uk
Facebook: 'Keeping Abreast - Norwich'
Contact: Jane Crockett, 01953 603642

WEA: Workers' Educational Association

Secretary: Ros Krieger - Tel: 01953 600639
rkrieger@talktalk.net

Wymondham Allotments Association

Eric Bradley, 07564119640

Wymondham & Attleborough Talking Newspaper

Tony Vale, 01953 605434, www.watn.org.uk

Wymondham Dementia Support Group

Dianne Fernee, 077127 27897
www.wymondham-dementia-support-group.org.uk

Wymondham Farm Machinery Club

Richard Mack, 01953 603773

Wymondham Garden Club

Secretary: Janice Hancock, 01953 600499.
Meetings are held on the third Monday of each month at Town Green Centre, Town Green, Wymondham, commencing at 7.30 pm.

Wymondham Heritage Society

Geoff Head, 01953 602457

Wymondham Nature Group (WyNG)

Ann Carpenter, 01508 488337
wymondham@norfolkwildlifetrust.org.uk

Sport

Angling Club

Mike Jarvis, 01953 603158

Basketball Courts, Wym. High School

01953 602078

Badminton Club

Colin Greengrass, 01953 605339

Wymondham Dell Bowls Club

Members Only, 01953 602099

Priory Garden Bowls Club (over 55s)

Mrs Woods, 01953 602414

Cricket Pitches, Wymondham High School

01953 602078

Football Club

Club House, 01953 607326

Football Pitches, Wymondham High School

01953 602078

Gymnasium, Wymondham High School

01953 602078

Wymondham Judo Club

Chris or Karen Claydon, 01953 604385

Netball Courts, Wymondham High School

01953 602078

Pitch & Putt, Silfield

Mrs N Hammond, 01953 603199

Rugby Club

01953 607332

Rugby Pitches, Wymondham High School

01953 602078

Tennis Courts, Kett's Park

Town Council, 01953 603302

Tennis Courts, Wymondham High School

01953 602078

Wymondham Leisure Centre & Swimming Pool

01953 607171

Wymondham Snooker Club

1 Town Green, Wymondham
Norfolk NR18 0PN, 01953 602318

Eastern Shotokan Karate Association

Wym Lesisure Centre
Tel 01603 418751 · office@eska.co.uk



Social

Bridge Club (Tuesday)

Secretary, 01379 852812

Chess Club (Friday)

Mr M Poulton, 01953 603700

Cribbage League

Mr J Braden, 01953 603570

ESOL free English lessons

The Hub, Ayton Road, NR18 0QJ

Paula : 07983 360058

info@hubproject.org.uk

www.hubproject.org.uk

Ex - Servicemen's Club

01953 602261

Lions Club

Mr Jim Cawte, 01953 605311

j.cawte@btconnect.com

Old Timers Motor Club

Mr Jim Cawte, 01953 605311

j.cawte@btconnect.com

Gaymer Ormond Lodge, Buffaloes

Mr Hartt, 01953 603050

RAF Association, Wymondham Branch

Mrs Partridge, 01953 603143

The Regal Experience

Maureen Dodman, 01953 605593

Royal British Legion, Wymondham Branch

Ann Rogerson, 01953 602817

The Zone

Family support group

The Hub, Ayton Road, NR18 0QJ

Contact : Sarah, 07428 005074

info@hubproject.org.uk

www.hubproject.org.uk

Youth Activities

Fire Cadets

01603 810351 · www.norfolkfireservice.gov.uk

The Space

Contact : 01953 798505

info@hubproject.org.uk

www.hubproject.org.uk

Wymondham Detachment Army Cadet Force

01362 694515

Guides & Scouts

Scouting & Girl Guiding

District Commissioner

Martijn Koster, Tel 01953 604289

gdc@wymondham-scouts-and-guides.uk

Full details of groups meeting in the Wymondham area and the process for applying to join can be found at:

www.wymondham-scouts-and-guides.uk

www.wymondham-scouts-and-guides.uk/schedule/groups/



Music

D'Capo Choir

Claire Dixon
Tel: 01603 759649

Livewire Opera Company

Debbie Gothard
Tel: 01953 851543

Encore

Kath Terry
Tel: 01953 604881

Wymondham Choral Society

Liz Fletcher, Tel: 01953 451286

Sing Your Heart Out

Kate Wood, Tel: 01953 602051

Wymondham Music Festival Committee

Chairman : Richard Elliot
Tel: 01603 810544 or 07733 002897
office@wymondhamfestival.org.uk
www.wymfestival.org.uk

Wymondham Symphony Orchestra

Rehearse in Wymondham High on Tuesdays
Adrienne Cleary, Tel: 01953 789637
www.wymondhamsymphonyorchestra.org.uk

Wymondham Youth Music Society

Ensemble playing and tuition.
Thursdays at Wymondham High.
Linda White, Tel: 01953 529158
enquiries@wymys.org.uk

Arts & Crafts

Wymondham Arts Forum

Andrew Carpenter, 07736 685363

Wymondham Lacemakers

Pam Holmes, 01953 600834
Pam Newstead, 01508 498429

Wymondham Photographic Society

Tel: 07753 863435

Wymondham Players

Heather Carpenter, 01953 601198
www.wymondham-players.org

Accommodation

Cobweb Cottage

42 Queens Street, Spooner Row
NR18 9JU · Tel: 01953 607236

Damgate Holiday Cottage

13 Damgate Street, Wymondham,
NR18 0BG
Tel: 01953 603413
Mobile: 07799 825799
info@damgateholidaycottage.co.uk
www.damgateholidaycottage.co.uk

Town House Hotel

28 Market Street, Wymondham,
NR18 0BB
Tel: 01953 606721
info@townhouse-hotel.co.uk
www.townhouse-hotel.co.uk



Aerials

Zenith Aerials and Satellite

3 Blazey Drive, Wymondham, NR18 0UY
Tel: 01953 856128
Mobile: 07849 282638
zenithaerials@live.co.uk

Agricultural / Industry

Cavick House Farm

Cavick House Farm, Cavick Road,
Wymondham, NR18 9PJ
Tel: 01953 604810
d.barber@farmline.com
www.cavickhousefarm.co.uk

Ernest Doe

Station Road, Wymondham, NR18 0NN
Tel: 01953 602982
wymondham@ernestdoe.com
www.ernestdoe.com

Farm Bits

Ayton Road, Wymondham, NR18 0QH
Tel: 01953 606668

Irrigation and Water

Unit 13, Penfold Drive, Gateway 11,
Wymondham, NR18 0WZ
Tel: 01953 600885
info@irrigationandwater.co.uk
www.irrigationandwater.co.uk

Stuart Wright Tractors

(a division of Stuart Wright Transport Ltd)
35 Penfold Drive, Wymondham,
NR18 0WZ · Tel: 01953 604710
swright@swtractors.co.uk

Antiques

Damgate Antiques

15 Damgate Street, Wymondham,
NR18 0BG
Tel: 01953 603424

Market Cross Antiques

16 Market Place, Wymondham,
NR18 0AX
Tel: 01953 601282

Wymondham Antiques Centre

3 Town Green, Wymondham, NR18 0PN
Tel: 01953 604817

Architectural

Lucas Hickman Smith

21 Town Green, Wymondham, NR18 0PN
Tel: 01953 607343

N J Myhill Architecture

The Studio, 13 Damgate Street,
Wymondham, NR18 0BG
Tel: 01953 603413
Mobile: 07799 825799
nigel.myhill@live.co.uk
www.njmyhill-architecture.co.uk

Gurney Reeve & Co. Ltd.

Suton, NR18 9SP · Tel 01953 603303

PCT Ltd

Oak Tree Business Park
Tel 01953 609930 · www.pctflow.com



Photograph supplied by Ellen Wills

Local Charities

Big C Charity Shop

8 Market Place, Wymondham
NR18 0AQ · Tel: 01953 619900

Big C Distribution Centre and Craft Shop

4 Allenbrooks Way, Wymondham,
NR18 0NW · Tel: 01603 603320

Break Charity

18 Market Street, Wymondham,
NR18 0BB · Tel: 01953 603047
office@break-charity.org
www.break-charity.org

British Red Cross

The Bridewell, Norwich Road, Wymondham,
NR18 0NS · Tel: 01953 607823

East Anglian Air Ambulance - EAAA

Hanger E, Gambling Close, Norwich Airport,
Norwich, NR6 6EG · Tel: 01603 269320
Website: www.eaaa.org.uk

East Anglia Children's Hospices – EACH

Anchor House 12 Market Place,
Wymondham, NR18 0AX · Tel: 01953 607467

Ex Servicemen Club

Friarscroft Lane, Wymondham, NR18 0AT
Tel: 01953 602261
p.manager@btinternet.com

The Hub

The Hub, Ayton Road, NR18 0QJ
Tel. 01953 798505
info@hubproject.org.uk
www.hubproject.org.uk

Keeping Abreast

Breast Cancer Reconstruction & Support Group
Tel. 01953 603642
www.keepingabreast.org.uk
jane.crockett@yahoo.co.uk

Norfolk PACT

Jubilee House, Falconers Chase, Wymondham,
NR18 0WW · Tel: 01953 424727
www.norfolkpact.co.uk

RSPCA Charity Shop

1 Church Street, Wymondham, NR18 0PH
Tel: 01953 602558

Star Throwers Cancer Care Centre

30 Melton Road, Wymondham, NR18 0DH
Tel: 01953 423304
info@starthrowers.org.uk
www.starthrowers.org.uk

Star Throwers Cancer Charity Shop

10 Middleton Street, Wymondham,
NR18 0AD · Tel: 01953 798426
info@starthrowers.org.uk
www.starthrowers.org.uk

The Children's Society

30 Market Street, Wymondham,
NR18 0BB · Tel: 01953 603469
www.childrensociety.org.uk

Wymondham Dementia Support Group

Fairland United Reformed Church in Wymondham
every Friday · Tel: 07712 727897
www.wymondham-dementia-support-group
.org.uk

Arts & Crafts Supplies

Geo. R. Reeve Ltd

2 Market Street, Wymondham,
NR18 0BB
Tel: 01953 606770
Fax: 01953 605440

Needlecraft

4 Town Green, Wymondham, NR18 0PW
Tel: 01953 711190
www.needlecraftwymondham.co.uk

Arts & Entertainment

Ian's Disco Roadshow

183 Orchard Way, Wymondham,
NR18 0NZ
Tel: 01953 609917
Mobile: 07881 928066
ian.myhill@talktalk.net
www.seriouslydisco.co.uk

Wymondham Arts Centre

Beckets Chapel, 2 Church Street,
Wymondham, NR18 0PH
info@wymondhamarts.com
www.wymondhamarts.com

Banks & Building Societies

Barclays Bank

45 Market Street, Wymondham,
NR18 0AL
Tel: 08457 555555
www.barclays.co.uk

HSBC Bank

2 Market Place, Wymondham, NR18 0AP
Tel: 08457 404404
www.hsbc.co.uk

Lloyds TSB

4 Market Place, Wymondham, NR18 0AG
Tel: 08453 000000
www.lloydstsb.com

Banks & Building Societies

Nationwide Building Society

7 Market Place, Wymondham, NR18 0AG
Tel: 0800 554 0884
www.nationwide.co.uk

Natwest

5 Market Place, Wymondham, NR18 0YY
Tel: 03457 888444
www.natwest.com

Norwich and Peterborough Building Society

10 Market Place, Wymondham,
NR18 0AQ · Tel: 01953 605478
www.nandp.co.uk

Bookmakers

Coral Bookmakers

10 Market Street, Wymondham,
NR18 0BB · Tel: 0800 440011
Shop Locator: 08001690299
www.coral.co.uk

Ladbrokes

7 Market Place, Wymondham, NR18 0AG
Tel: 0800 030 4496 · www.ladbrokes.com

Book Shops

Ketts Books

3 Wharton Court, Off Market Street
NR18 0UQ · Tel: 01953 603663
www.kettsbooks.co.uk

M & AC Thompson Books

1 Town Green, Wymondham, NR18 0PN
Tel: 01953 602244

Builders Merchants

Jewsons

Bridge Industrial Estate, Silfield Road,
Wymondham, NR18 9AU
Tel: 01953 606391 · www.jewson.co.uk

VAN AND A MAN

MOVE ANYTHING,
ANYTIME, ANYWHERE

NATIONWIDE COVERAGE

- SINGLE ITEM OR FULL HOUSEHOLD REMOVALS
- SAME DAY SERVICE
- SEVEN DAYS / EVENINGS
- STUDENT MOVES
- OFFICE / PIANO MOVES
- FREE INSTANT QUOTES
- ALL CLEARANCES UNDERTAKEN



Tel: 01953 488919

Mobile: 07751 171606

www.vanandaman.com

Email: toni@vanandaman.com

Mitchell Building Services

New Builds / Extensions / Renovations

Wall & Floor Tiling

Fitted Kitchens & Bathrooms

Driveways & Patios

Chimneys & Fireplaces

Garages; All Carpentry Work

Project Management Service: Design to Completion

17 Silfield Road, Wymondham, NR18 9AU

01953 607139 07887 802396

mitchellbs@hotmail.co.uk



SPIRE
SOLICITORS OF

Established 1984 and regulated by the Solicitors Regulation Authority

Dedicated to providing
outstanding expertise and legal
advice for individual clients and
businesses throughout the region.

Corporate &
Commercial
Commercial Property
Housing Development
Tenancy Management
Agriculture
Debt Collection
Personal Injury Claims
Human Resources

Conveyancing
Wills, Tax & Probate
Family Law
Collaborative Law
Employment Law
Litigation & Disputes
Mediation
Dispute Resolution

Altleborough | Aylsham | Dereham | Diss
Long Stratton | Norwich | Watton | Wymondham

Wymondham office - 5-7 Church Street, Wymondham
Spire Solicitors LLP is authorised and regulated by the Solicitors Regulation
Authority (SRA No. 594334)

gP

Overburys

HV&A

T 01953 606351 | www.spire solicitors.co.uk | info@spire solicitors.co.uk

Building & Construction

Chris Hammer Digger Hire

Glebe Farm, Wattlefield, Wymondham,
NR18 9PA · Tel: 01953 603361

Complete Maintenance

1a Cock Street, Wymondham, NR18 0BX
Tel: 01953 601853

Gale Construction Company Ltd

Ayton Road Industrial Estate,
Wymondham, NR18 0QQ
Tel: 01953 604537
info@gale-construction.co.uk
www.gale-construction.co.uk

H Young Structures Ltd

Ayton Road, Wymondham, NR18 ORD
Tel: 01953 601881

JS Asphalt

Sunnyside Farm, Golf Links Road,
Morley St Peter, Wymondham,
NR18 9SU · Tel: 01953 607141
jsasphalt@yahoo.co.uk
www.jsasphalt.co.uk

Les Cooper Builders

77 High Street, Wicklewood
Wymondham, NR18 9QA
Tel: 01953 606480 · Mobile: 07740 986865
lescooperbuilders@tiscali.co.uk

Mitchell Builders

17 Silfield Road, Wymondham,
NR18 9AU · Tel: 01953 607139
Mobile: 07887 802396
mitchellbs@hotmail.co.uk

Myhill Maintenance and Construction

13 Damgate Street, Wymondham,
NR18 0BG · Tel: 01953 603413
Mobile: 07799 825799
nigel.myhill@live.co.uk

Orchard Timber Buildings

Unit 5, Postmill Close, Wymondham,
NR18 0NL · Tel: 01953 603398

Ramsay Holmes

Unit 5, Allenbrooks Way, Wymondham,
NR18 0NW · Tel: 01953 603550

Butchers

Collins Butchers

59 Back Lane, Wymondham, NR18 0LB
Tel: 01953 604979

P T Parke Butchers

3 Market Street, Wymondham, NR18 0AJ
Tel: 01953 603284

Cafés & Coffee Shops

Garden Tea Room

3a Town Green, Wymondham, NR18 0PN
Tel: 07763 481199

Bridewell Tea Room (Heritage Museum)

Browick Road, Wymondham,
Tel: 01953 600205

Courtyard Coffee Shop

6 Whartons Court, Wymondham,
NR18 0UQ, Tel: 01953 604436

Fairlands Diner

25 Fairland Street, Wymondham,
NR18 0AW, Tel: 01953 602043

The Olde Stables

4 Griffin Court, Wymondham, NR18 0GU
Tel: 07840663403

Coffee Inc. Café

12 Norwich Road, Wymondham,
NR18 0NS, Tel: 01953 859968

Lemon Tree

2 Damgate Street, Wymondham,
NR18 0BQ, Tel: 01953 606366

Mad Hatters Tea Shop

14a Market Place, Wymondham,
NR18 0AX, Tel: 07901 334473

The Coffee Shop

25 Market Street, Wymondham,
NR18 0AJ · Tel: 01953 423482

Cards, Gifts & Stationery

Geo. R. Reeve Ltd

2 Market Street, Wymondham, NR18 0BB
Tel: 01953 606770, Fax: 01953 605440

Leslie Terrance

1 Town Green, NR18 0PN
01953 707160 · www.leslieterrance.co.uk

Marmalade Tree

17-18 Market Place, Wymondham,
NR18 0AX · Tel: 01953 423123

Paper Wishes

40 Market Street, Wymondham,
NR18 0BB · Tel: 01953 602398

Simply Cards

23 Market Street, Wymondham,
NR18 0AJ · Tel: 01953 601321

Care & Nursing Homes

Complete Caring Ltd

1a Cock Street, Wymondham, NR18 0BX
Tel: 01953 423424

Saffron/Contact Care

Tel: 0800 917 4680 or 01953 532000
contactcare@saffronhousing.co.uk

Sutherlands Care Home

136 Norwich Road, Wymondham,
NR18 0SX · Tel: 01953 600900

Carpenters

Stuart Gooda

8 Chapel Lane, Wymondham, NR18 0DL
Tel: 01953 600790
www.stuartgoodacarpentry.co.uk

Flooring & Furniture

Batemans

34 Market Street, Wymondham,
NR18 0B · Tel: 01953 607506

Cleaning Doctor

54 Folly Road, NR18 0QR
Tel: 08007720772 / 07773280772
www.cleaningdoctor.co.uk

Jarrolds

7 Middleton Street, Wymondham,
NR18 0AB · Tel: 01953 603251

Flooring & Furniture

John Doe

46-50 Sawmills Road, Diss, IP22 4DA
Tel: 01379 644081
info@johndoediss.co.uk
www.johndoediss.co.uk

Nice Fit Carpets

241 Norwich Road, Wymondham,
NR18 0SL · Tel: 01953 605096

Wymondham Furniture Warehouse

Ayton Road, Wymondham, NR18 0QJ
Tel: 07833 665958
www.wymondhamfurniturewarehouse.com

Child Care & Play Centres

Bouncing Beans

197 Norwich Road, Wymondham, NR18 0SJ
Tel: 01953 857311
mail@bouncingbeanschildrensnursery.co.uk
www.bouncingbeanschildrensnursery.co.uk

Hulabaloos Childrens Play Centre

Units 3-5, Great Expectations Business Park,
London Road, Wymondham, NR18 9SJ
Tel: 01953 604526
info@hulabaloos.co.uk
www.hulabaloos.co.uk

Jo Pettitt

Ofsted Registered Childminder, Wymondham.
Tel: 07941 095644

Kaleidoscope

Tel: 07884 187967
kaleidoscope-osc@hotmail.com

Mulberry Bush Day Nursery

Norwich Common, Wymondham,
NR18 0SP · Tel: 01953 603792
st.edmunds@mulberrybush.org
www.mulberrybush.org

Noah's Ark Childrens Nursery

The Park, Wymondham College, Morley,
Wymondham, NR18 9SX · Tel: 01953 798147
noahsark@wymondhamcollege.org
www.noahsarknursery.org

Wymondham College

Wymondham, NR18 9SZ · Tel: 01953 609000
enquiries@wymondhamcollege.org
www.wymondhamcollege.org

Cleaning / Upholstery

Cleaning Doctor

54 Folly Road, NR18 9QR
08007 720772 · www.cleaningdoctor.co.uk

Clothing & Accessories

Doves

6 Market Street, Wymondham, NR18 0BB
Tel: 01953 857888

Handbag and Leather and First Footing

3 Fairland Street, Wymondham,
NR18 0AN · Tel: 01953 603594

Middletons

21-25 Middleton Street, Wymondham,
NR18 0AB · Tel: 01953 607518
www.middletonsclothing.com

Smarty Pants

8 Damgate Street, Wymondham,
NR18 0BQ · Tel: 01603 811258
Mobile: 07450 485555

The Country Collection

15 Spur Road Industrial Estate,
Postmill Close Wymondham, NR18 0NL
Tel: 01953 600234
www.countrycollectiononline.co.uk

Ward-Robes

20 Fairland Street, Wymondham,
NR18 0AW · Tel: 01953 607831

Confectionery Shops

Yum Yums Sweet Shop

38 Fairland Street, Wymondham,
NR18 0JS · Tel: 07799 086875

Convenience Shops

One Stop

39 Market Place, Wymondham, NR18 0AJ
Tel: 01953 603589

One Stop

26-28 Town Green, Wymondham,
NR18 0PW · Tel: 01953 607733

Spar

1 Holly Blue Road, Wymondham,
NR18 0XJ · Tel: 01953 603837

Cookwear

Cookhouse Hire

37 Penfold Drive, Wymondham,
NR18 0WZ · Tel: 01603 502321

Jarrolds

7 Middleton Street, Wymondham,
NR18 0AB · Tel: 01953 603251

Domestic Fuel

C L Fielder

Tel: 01953 604897
charles@clfwoodfuel.co.uk
www.clfwoodfuel.co.uk

Rix Oils

Tel: 01953 798025 · www.rix.co.uk

Dry Cleaning

Harvey's Dry Cleaners

12a Fairland Street, Wymondham,
NR18 0AW · Tel: 01953 607493

Electrical Services & Suppliers

A C Washing Machines

17 Spur Road Industrial Estate,
Postmill Close, Wymondham, NR18 0NL
Tel: 01953 606688
www.acwashingmachines.com

Adrian Dawes Domestic Appliances

Tel: 01953 603195 · Mobile: 07885 706509
www.adriandawes.co.uk

Alan Cross Electrical

22a Station Road, Wymondham,
NR18 0JX · Tel: 01953 603637
enquiries@acrosselectrical.co.uk

C C S Electrical

49 Norwich Road, Tacolneston, Norwich,
NR16 1BY · Tel: 01508 488290
Mobile: 07786 873295
ccselectrical@outlook.com

Electrical Services & Suppliers

Edmundsons Electrical Ltd

Unit 1 Allenbrooks Way, Wymondham,
NR18 0NW · Tel: 01953 607509

Excel Electrical Services Ltd

10 Knyvett Green, Ashwellthorpe,
Norwich, NR16 1HA
Tel: 01508 488007 · Mobile: 07718 206110
enquiries@excelelectrical.co.uk
www.excelelectrical.co.uk

Hughes Electrical

41 Market Street, Wymondham,
NR18 0AJ · Tel: 01953 602284

Ian Myhill Electrical

183 Orchard Way, Wymondham,
NR18 0NZ, Tel: 01953 609917
Mobile: 07881 928066
ian.myhill@talktalk.net

PES Electrical Installations

5 Burdock Close, Wymondham, NR18 0YE
Tel: 01953 711076 · Mobile: 07595 440420
info@wymondhamelectrician.com

Estate Agents

Abbotts Countrywide

15 Market Place, Wymondham, NR18 0AX
Tel: 01953 602199
wymondham@abbottscountrywide.co.uk

Hammond Lee

22 Market Street, Wymondham,
NR18 0BB · Tel: 01953 609100
wymondham@hammondlee.co.uk
www.hammondlee.co.uk

Money Properties

16 Market Street, Wymondham,
NR18 0BB · Tel: 01953 423006
post@moneyproperties.co.uk
www.moneyproperties.co.uk

Estate Agents

Oaktree Partnership

5a Allenbrooks Way, Wymondham,
NR18 0NW · Tel: 01953 600051
info@oaktreepremises.co.uk
www.oaktreepremises.co.uk

TW Gaze Estate Agents

33 Market Street, Wymondham,
NR18 0AJ · Tel: 01953 423188

Warners Estate Agents

13b Market Street, Wymondham,
NR18 0AJ · Tel: 01953 604431

William H Brown Estate Agents

27 Market Street, Wymondham,
NR18 0A · Tel: 01953 602578

Farm Shops, Health Food Shops And Delicatessens

Disney's Delicatessen

6 Middleton Street, Wymondham,
NR18 0AD · Tel: 07592 032985
www.disneydeli.com

Nature and Health

17 Griffin Court, Wymondham,
NR18 0GU · Tel: 01953 856061

The Egg Shed and Hen House

Cavick House Farm, Cavick Road,
Wymondham, NR18 9PJ
Tel: 07760 233885
annabel_barber@yahoo.co.uk
www.annabsegghshed.co.uk

Wymondham Healthfoods

17 Market Street, Wymondham,
NR18 0AJ · Tel: 01953 603738

Financial Services

Berry and Warren Accountants

10 Fairland Street, Wymondham,
NR18 0AW · Tel: 01953 604707
www.berry-warren.co.uk

Grant Matthewson Chartered Certified Accountants

1 Town Green, Wymondham, NR18 0PN
Tel: 01953 600683
mail@grantmatthewson.co.uk
www.grantmatthewson.co.uk

James Wagg

Church Farm Barn, Wattlefield, NR18 9JY
Tel: 01953 788003
james.wagg@sjpp.co.uk
www.sjpp.co.uk/jameswagg

Sarah Heycock Bookkeeping Services

High Common Cottage, High Common,
Cranworth, Thetford, IP25 7SX
Tel: 01362 820564
sarah@sarahheycockbookkeeping.co.uk
www.sarahheycockbookkeeping.co.uk

T B Reeve Bookkeeping Services

Tifford House, 20 Station Road,
Wymondham, NR18 0JX
Tel: 01953 603471

VFM Accounting

Fitzmaurice Court Industrial Estate,
Valleyside, Wymondham, NR18 0NN
Tel: 01953 601205

Warners Financial Services

1 Market Street, Wymondham, NR18 0AJ
Tel: 01953 607313

Firewood

C L Fielder

Tel: 01953 604897
charles@clwoodfuel.co.uk
www.clwoodfuel.co.uk

Freight

Wymondham Freight

11 Allenbrooks Way, Wymondham,
NR18 0NW · Tel: 01953 602851
www.wymondhamfreight.com

Florists

Ragged Robin Florist

1 Wood Avens Way, Harts Farm
Wymondham, NR18 0XP
Tel: 01953 602374
info@raggedrobinflorist.co.uk
www.raggedrobin.co.uk

Funeral Services

R J Bartram

Henley House, 42 Fairland Street,
Wymondham, NR18 0JS
Tel: 01953 603138
9024@fairwaypartnership.co.uk
www.mylocalfuneraldirector.com

Rosedale Funeral Services

16 Middleton Street, Wymondham,
NR18 0AD · Tel: 01953 601103
wymondham@rosedalefuneralhome.co.uk
www.rosedalefuneralhome.co.uk



MYHILLS
pet and garden



Loads of Garden Offers ~ Loads of Pet Offers
Come and See our Huge in-town
Pet and Garden Centre at
36 Fairland Street, Wymondham
Tel: 01953 602272

Branches:

Queens Square, Attleborough

Tel: 01953 453104

35 Mere Street, Diss

Tel: 01379 642465



or visit our website:

www.myhillspetandgarden.co.uk

and see our special offer lists in full, plus all our branch details

HOME  FARM
CATTERY



- ✿ Brand new, architect designed and purpose built to very high standard.
- ✿ Daily cuddles and pampering.
- ✿ Music to each chalet.
- ✿ Scratch posts and toys available.
- ✿ Choice of food from most main brands included and special diets fed if provided.
- ✿ Fully Licensed and insured.
- ✿ Individual thermostatically controlled heating to each chalet.
- ✿ Each chalet cleaned daily and a deep steam clean before each new arrival.
- ✿ Fully insulated and double glazed.
- ✿ Choice of single, double or family chalets.
- ✿ Sneeze barriers between each chalet.

**Call for a preliminary chat &
arrange a visit 01603 811106**
www.homefarmcattery.co.uk
paul@homefarmcattery.co.uk

Tel. 01603 811106 - Home Farm, Ketteringham Lane, Hethersett, Norwich NR9 3DF

Garage Services & Car Sales

Abbeygate Garages Ltd

Norwich Road, Wymondham, NR18 0SH
Tel: 01953 601602 · www.abbeygatecars.co.uk

Brent Lennon

2 Avenue Road, Wymondham, NR18 0QF
Tel: 01953 600704

Cando Autocentres Ltd

7 Chestnut Drive, Wymondham Business Park,
Wymondham, NR18 9SB
Tel: 01953 423433 · www.cando.me.uk

E J Swatman Commercial Vehicle Engineers

Willow Farm, London Road, Sutton,
Wymondham, NR18 9SL
Tel: 01953 602219

Guest Truck and Van

2 Ayton Road, Wymondham, NR18 0QH
Tel: 01953 857272

John Kemp Land Rover

8-10 Norwich Common, Wymondham,
NR18 0SP · Tel: 01953 601440

Merc-Pro Ltd

Unit 1a Wymondham Business Centre
Eleven Mile Lane, NR18 9JL
01953 423475 · www.merc-pro.co.uk

Postmill Garage

Unit 4, Chestnut Drive, Wymondham
Business Park, Wymondham, NR18 9SB
Tel: 01953 602691 · postmill01@yahoo.co.uk
www.postmillgarage.co.uk

Stannard Motors

Unit 4, Philip Ford Way NR18 9AQ
Tel: 01953 606382, 604006

Stuart Wright Transport Ltd

35 Penfold Drive, Wymondham,
NR18 0WZ · Tel: 01953 604710
swright@swtransport.co.uk

T G Body Shop

6 Acorn Court, Wymondham, NR18 9AL
Tel: 01953 602667 · Mobile: 07788 544996
tgbodyshop@hotmail.co.uk

Wicklewood Auto Centre

Green Farm, The Green, Wicklewood,
Wymondham, NR18 9PU
Tel: 01953 799038

Wymondham Recovery

Unit 19 Spur Industrial Estate,
Postmill Close, Wymondham NR18 0NL
Tel: 01953 603709

Zenos

Unit 13, Wymondham Business Park
Chestnut Drive, NR18 9SB
01953 606545 · www.zenoscars.com

Garden Centres

Myhill's Pet and Garden

36 Fairland Street, Wymondham,
NR18 0AW · Tel: 01953 602272
myhillspetandgarden.co.uk
www.myhillspetandgarden.co.uk

Wymondham Garden Centre

Tuttles Lane East, Wymondham,
NR18 0EP · Tel: 01953 600282

General Stores

Pound Stretcher

Gateway 11, Wymondham, NR18 0WF
Tel: 01953 423409

The Original Factory Shop

Ayton Road, Wymondham, NR18 0QH
Tel: 01953 606234

Health & Beauty

Aristocuts

19 Market Street, Wymondham,
NR18 0AJ · Tel: 01953 603295
- Also at : Wensum Valley Hotel,
Beech Avenue, Taverham, Norwich,
NR8 6HP · Tel: 01603 866580
aristocutssalon@yahoo.co.uk
www.aristocuts.org

Aroma Beauty Clinic

57 Back Lane, Wymondham, NR18 0LB
Tel: 01953 600309

Bentley's Barbers

20 Market Street, Wymondham,
NR18 0BB, Tel: 01953 605754

Cutting Edge

34 Lime Tree Avenue, Wymondham,
NR18 0HH, Tel: 01953 604187



EYE CONIC

CLASSIC GLASSES
& SUNGLASSES

NORWICH
ATTLEBOROUGH
DEREHAM
HALESWORTH
HARLESTON
WATTON
WROXHAM
WYMONDHAM
CECILAMEY.CO.UK

CECIL AMEY

Looking Good!

Health & Beauty

Illusions Beauty, Nail and Tanning Spa

36 Lime Tree Avenue, Wymondham,
NR18 0HH · Tel: 01953 529398
enquiries@beautifulillusions.co.uk
www.beautifulillusions.co.uk

Keeley's Beauty

7 Whartons Court, Wymondham,
NR18 0UD · Tel: 01953 601010

Kutz Rebellion

4 Middleton Street, Wymondham,
NR18 0AD · Tel: 01953 603909

Marola's

19 Fairland Street, Wymondham,
NR18 0AW · Tel: 01953 602847

McQueens Barbers

38 Lime Tree Avenue, NR18 0HH
Tel: 01953 603614
enquiries@mcqueensbarbers.co.uk

No 5 Hair Studio

5 Wharton's Court, Wymondham,
NR18 0UQ · Tel: 01953 600770

Poppa Johns Ltd

8 Whartons Close, Wymondham,
NR18 0UQ · Tel: 01953 605100

The Ultimate Touch Hair Design

8a Market Place, Wymondham,
NR18 0AQ · Tel: 01953 607060

Anngelfish

Tel 07877 166277
www.anngelfish.co.uk
glenna@anngelfish.co.uk

Footsure - Foot Health

Whartons Court, NR18 0UQ
Tel 01953 425825
www.facebook.com/footsure

Health & Safety

BBC Fire Protection Ltd

St Florian House, Ayton Road, Wymondham,
NR18 0QH · Tel: 01953 857700
sales@bbcfire.co.uk · www.bbcfire.co.uk

Britannia Safety and Training

Chestnut Drive, Wymondham, NR18 9SB
Tel: 01953 606100

Health & Safety

East Fire Extinguisher and Alarm Ltd

Bridge Industrial Estate, Silfield Road,
Wymondham, NR18 9AU
Tel: 01953 603508 · enquiries@e-fire.co.uk

Edward Associates

20a Fairland Street, Wymondham,
NR18 0AW · Tel: 01953 606313
www.edward-associates.co.uk

Xcell Misting Ltd

21 Penfold Drive, Wymondham,
NR18 0WZ · Tel: 01953 856097
office@xcellmisting.com
www.xcellmisting.com

Heating Supplies & Components

Anglian Heating Components

Unit 13, Spur Industrial Estate,
Wymondham, NR18 0NL · Tel: 01953 607833
info@ahcomponents.co.uk
www.ahcomponents.co.uk

Highway & Roofing Supplies

Ayton Products

Ayton Road, Wymondham, NR18 0QH
Tel: 01953 602002 · www.ayton.co.uk
saleswymondham@ayton.co.uk

MW Surfacing

Lodge Cottage, London Road, Sutton,
Wymondham, NR18 9SN · Tel: 01953 606939
mwsurfacing@aol.com
www.mwsurfacing.co.uk

Holistic Supplies

Holistic Trader

Unit 3, Chestnut Drive, Wymondham,
NR18 9SB · Tel: 01953 857260



HEALTH, BEAUTY, FITNESS & NUTRITION
FROM THE INSIDE OUT.

STAY CLOSE TO NATURE. IT WILL NEVER FAIL YOU.

www.anngelfish.co.uk
glenna@anngelfish.co.uk
Tel. 07877 166277

Station Bistro

WYMONDHAM

- Local meats & fresh produce •
- Tasty homemade dishes •
- English breakfast through to hot lunches & evening meals •

OPEN DAILY FROM 8.30am

See website for our menu!

*Open Every Friday &
Saturday Evenings!*

**Find us on the platform at
Wymondham's Historic Railway!**

Tel. 01953 606433

www.station-bistro-wymondham.co.uk
stationbistrowymondham@btconnect.com

LIFESTYLE CHANGING
MOBILITY SOLUTIONS



Sales, Hire & Servicing for:

**Mobility Scooters • Stairlifts
Adjustable Beds
Rise & Recline Chairs
And Much More**



*We are pleased to announce that we
are now authorised suppliers of
Brid-Ayd Hoists and car adaptations.*

nigel@nbrscooterbrokers.co.uk • www.nbrscooterbrokers.co.uk

**NBRSCOOTER
BROKERS LTD**

Tel: 01953 789 090

Home Furnishings

Jarrolds

7 Middleton Street, Wymondham,
NR18 0AB · Tel: 01953 603251

Jeanette Raven Curtains, Blinds & Soft Furnishings

Tel: 01603 812955

Amanda Jones Home Furnishings

24 Pelargonium Drive, NR18 0FQ
Tel 01953 605209
amanda@norfolksoftfurnishing.co.uk

Home Improvements

Alcosa

1 Penfold Drive, Wymondham, NR18 0WZ
Tel: 01953 602482 · info@alcosa.co.uk
www.alcosa.co.uk

Arthurton and Reeve Paving Ltd

31 Browick Road, Wymondham, NR18 0QW
Tel: 01953 423086 · Mobile: 07979 373151

Complete Maintenance

1a Cock Street, Wymondham, NR18 0BX
Tel: 01953 601853 · Mobile: 07795 614516

Gary Cooper Paving

The Old Scrapyard, Stayground Lane,
Wymondham, NR18 9NA · Tel: 01953 607289

J Moon Home Improvements

Unit 3 Postmill Close, Wymondham
NR18 0NL · Tel: 01953 601522
www.jmoonhomeimprovements.co.uk

Noble Paving East Anglia Ltd

Tel: 01953 887346 · Mobile: 07786 052205
info@noblelandscapers.co.uk
www.noblelandscapers.co.uk

Ramsay Holmes

Unit 5, Allenbrooks Way, Wymondham,
NR18 0NW, Tel: 01953 603550

Wymondham Interiors

Ayton Road, Wymondham, NR18 0QJ
Tel: 07949 500590

Information Technology

Anglia Computer Solutions

7 Market Street, Wymondham, NR18 0AJ
Tel: 01953 859753
www.angliacomputersolutions.co.uk

Anglia Internet Ltd

The Computer Shop, 12 Fairland Street,
Wymondham, NR18 0AW
Tel: 01953 601589

APR Telecoms Maintenance Ltd

Philip Ford Way, Silfield Road
Wymondham, NR18 0AQ · Tel: 01953 713333
enquires@aprtelecoms.co.uk
www.aprtelecoms.co.uk

LinuSoft

13 Perrings, Wymondham, NR18 0JR
Tel: 0845 658563 · enquiries@linusoft.co.uk
www.linusoft.co.uk

NetMatters Ltd

11 Penfold Drive, Wymondham,
NR18 0WZ · Tel: 01603 704020

Norfolk Computer Services

32 Briton Way, Wymondham, NR18 0TT
Tel: 01953 878524

Williams Lea

Penfold Drive, Wymondham, NR18 0WZ
01953 859200 · www.williamslea.com

Insurance

Priory Insurance

4 Fairland Street, Wymondham,
NR18 0AN · Tel: 01953 602866
enquiries@prioryinsurance.co.uk
www.prioryinsurance.co.uk

Ironmongers & Locksmiths

C C Clements

5-9 Fairland Street, Wymondham,
NR18 0AW, Tel: 01953 602104
Emergency number: 07799 897534
ccclcm.locks@email.com

Kingfisher Locksmiths

3 Highbanks, Wymondham
NR18 0UZ, Tel: 01953 602255



MCQUEENS
MALE GROOMING

www.mcqueensbarbers.co.uk
01953 603614

McQueens is a traditional barber shop with a twist, offering a wide range of premier male grooming services. Alongside classic haircuts and luxurious wet shaves, we offer bespoke treatments and our own range of deluxe products for the modern gent who appreciates timeless service.



Based on Lime Tree Avenue, Wymondham, with free customer parking and complimentary drinks while you wait.



RELAX & PAMPER YOURSELF AT OUR WONDERFUL BEAUTY, NAIL & TANNING SALON.



'Illusions' Beauty Salon offer many treatments amongst which include Fake Bake spray tanning to safely give you a beautiful natural looking tan, waxing, beautiful nail extensions, manicures, pedicures, eyelash extensions, make-up using Bare Minerals, facials, semi-permanent make-up, relaxing Swedish massage and many more all carried out in the wonderful relaxing atmosphere of our beauty, nail and tanning spa!

We also offer bespoke packages to cater for weddings and special occasions - so please contact us today to discuss how we can pamper you!



To book your next appointment, call us on : 01953 529398
www.beautifulillusions.co.uk



Jewellers

Hemstocks

37 Market Street, Wymondham, NR18 0AJ
Tel: 01953 606992 · www.hemstocks.co.uk

Kitchens & Bathrooms

Bryan Turner Kitchen Furniture Ltd

Fitzmaurice Court, Station Road,
Wymondham, NR18 0NN · Tel: 01953 601567

Supreme Bathrooms and Kitchens

10 Chestnut Drive, Wymondham Business
Park, Wymondham, NR18 9SB
Tel: 01953 600660

The Clarendon Kitchen Company

Unit 17, Penfold Drive, Gateway 11,
Wymondham, NR18 0WZ · Tel: 01953 601500
www.clarendonkitchens.com

The Kitchen Centre

The Granary, Silfield Road, Wymondham,
NR18 9AU · Tel: 01953 606477
info@kitchenswymondham.co.uk
www.kitchenswymondham.co.uk

Legal Services

Fosters Solicitors

Becket House, 1 Middleton Street,
Wymondham, NR18 0AB
Tel: 01953 607724
wymondham@fosters-solicitors.co.uk
www.fosters-solicitors.co.uk

Hansells Solicitors

10 Fairland Street, Wymondham,
NR18 0AW · Tel: 01953 857578

Spire Solicitors

5-7 Church Street, Wymondham, NR18 0PP
Tel: 01953 606351
www.spiresolicitors.co.uk

Limousine Hire

First Impression Limos

6 Acorn Court, Wymondham, NR18 9AL
Tel: 01953 602667 · Mobile: 07788 544996
norfolklimos@hotmail.co.uk

Locksmith & Security

Miles Better Security

Tel: 01603 396 010 · Mobile: 07949 983 354
andy@milesbettersecurity.co.uk
www.milesbettersecurity.co.uk

Manufacturing

Abbey Products (Norfolk) Ltd

Ayton Road, Wymondham, NR18 0QH
Tel: 01953 602627
info@abbey4pu.com
www.abbey4pu.com

Advanced Aluminium

Ayton Road, Wymondham, NR18 0QH
Tel: 01953 609904

Aluminium Windows and Doors Ltd

Unit 5 Fitzmaurice Court Industrial Estate,
Wymondham, NR18 0NN · Tel: 01953 606999

Barley Chalu Ltd

Ayton Road, Wymondham, NR18 0QH
Tel: 01953 602771
sales@barleychalu.co.uk
www.barleychalu.co.uk

Hi-Span

Ayton Road, Wymondham, NR18 0RD
Tel: 01953 603081 · www.hi-span.com

M & T Precision

Unit 7, Fitzmaurice Court Industrial Estate,
Wymondham, NR18 0NN · Tel: 01953 606277

Multimatic CFT Ltd

Gateway 11 Business Park, Coppersmith Way,
Wymondham, NR18 0WY · Tel: 01953 859610

Pruce Newman Pipework Ltd

Ayton Road, Wymondham, NR18 0QJ
Tel: 01953 605123

South Norfolk
INDEPENDENT
DETAILED
AWARDS 2019
★
WINNER

No.5
HAIR STUDIO

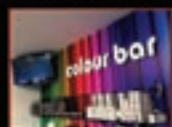
PREMIER UNISEX SALON IN WYMONDHAM

South Norfolk
INDEPENDENT
DETAILED
AWARDS 2019
★
WINNER



10% OFF 1ST VISIT

- COLOUR & CUT SPECIALISTS ●
- HAIR EXTENSIONS ●
- FRIENDLY, RELAXED ATMOSPHERE ●
- LOYALTY CARD & VIP LOYALTY CARD SCHEME'S ●



- WALK IN OR BY APPOINTMENT ●
- COMPETITIVE PRICES ●
- LOYALTY CARD SCHEME ●

STYLE ISN'T BORN,
ITS GROOMED



TEL: 01953 600770

WWW.NO5HAIRSTUDIO.CO.UK



Tel: 01953 607493

12a Fairland Street, Wymondham, Norfolk NR18 0AW



We have been trading for over 10 years and we pride ourselves on our high level of customer service and affordable prices.

For our customers we can guarantee;

- Price Quoted in advanced - Or you pay nothing
- Delivery on time, every time - Or you pay nothing
- Cleaning to your satisfaction - Or we will reclean free of charge

We are Unique - No other dry cleaning company is willing to guarantee their work.

Why not give us a try to see just how unique we are?

www.harveysdrycleaners.co.uk | info@harveysdrycleaners.co.uk

Manufacturing

Raepak Ltd

Unit 9, Oaktree Business Park, Philip Ford Way, Wymondham, NR18 9AQ
Tel: 01953 605700 · www.raepak.co.uk

Stanley Steel Stockholders

Valley View Works, London Road, Wymondham, NR18 9JD · Tel: 01953 602116
sales@stanley-steel.co.uk
www.stanley-steel.co.uk

Stauff Anglia Ltd

Unit 405, Copper Smith Way, Wymondham, NR18 0WY · Tel: 01953 857158
sales@stauffanglia.co.uk
www.stauffanglia.co.uk

Mobility Services

NBR Scooter Brokers

Maple Leaf Farm, Bunwell Road, Bunwell, Norwich, NR16 1SZ, Tel: 01953 789090
email@nbrscooterbrokers.co.uk
www.nbrscooterbrokers.co.uk

Motor Auctions

East Anglia Motor Auctions

Copper Smith Way, Wymondham, NR18 0WY · Tel: 01953 859180
www.eama-norwich.co.uk

Museums

Wymondham Heritage Museum

The Bridewell, Norwich Road, Wymondham, NR18 0NS · Tel: 01953 600205
www.wymondhamheritagemuseum.co.uk

Specialist Services

Bourn Hall Clinic

Unit 3, The Apex, Gateway 11, Farrier Close, Wymondham, NR18 0WF · Tel: 600213

Opticians

Cecil Amey Opticians

8 Market Street, Wymondham, NR18 0BB
Tel: 01953 605181
www.cecilameyopticians.co.uk

Painters & Decorators

Derek Hardaker Professional Painter and Decorator

Chapel House, Silfield Street, Wymondham, NR18 9NL · Tel: 01953 605269
drhdecorating@talktalk.net
www.drhdecorating.co.uk

Park Homes

Masterman Park Homes Ltd

Valleyside Industrial Estate, Wymondham, NR18 0NN · Tel: 01953 606202

Plant Hire

UK Platforms

Unit 15, Chestnut Drive, Wymondham, NR18 9SB · Tel: 01953 859050

Pets & Animals

Dirty Dogs Stop and Groom Shop

The Old Waiting Room, Platform 2, Wymondham Train Station, Wymondham, NR18 0JZ · Tel: 01953 601166

Granville Saddlery

Unit 4 Postmill Close, Wymondham, NR18 0NL · Tel: 01953 602967
gsequestrian@btconnect.com
www.granvillesaddlery.co.uk



Traditional English
14th Century Tavern
set within the heart
of Wymondham

2015 Norwich & Norfolk CAMRA Rural Pub of the year
2015 Tiffany Valley Community Pub of the year

In the 2016 Good Beer Guide



Upcoming Events, Real Ale, Music, and Cider festivals
over the May 27th - 30th and August 26th - 29th Bank
Holiday Weekends, Pub Quiz every Thursday,
DragonFest open mic nights, and much more!

Open from midday every day, fresh home cooked
food to be found on our bar menu and specials
board, ever changing selection of regional ales and
nearly fifty whiskies to sample.



6 Church Street, Wymondham, Norfolk, NR18 0PH

t: 01953 607907 e: info@greendragonnorfolk.co.uk w: www.greendragonnorfolk.co.uk

Rediscover your world of **SOUND**



Karen Finch RMAJ FSHAA FRSA

The multi-award winning Hearing Care Centre team
are caring for all your hearing needs locally at:

Cecil Amey Opticians,
Market Street

Wymondham

A partnership with:

CECIL AMEY

- Hearing tests • Latest digital hearing aids
- Outstanding aftercare • Ear wax removal
- Noise protection • Tinnitus management
- Hearing aid repairs • Home visits also available

To book your appointment Freephone 0800 096 2637



• Multi-Award Winning • Family Run • Private • 100% Independent • 20 Local Centres

hearingcarecentre.co.uk

Pets & Animals

Hethersett Cattery

Home Farm, Ketteringham Lane, Hethersett,
Norwich, NR9 3DF · Tel: 01603 811106
paul@homefarmcattery.co.uk
homefarmcattery.co.uk

Myhill's Pet and Garden

36 Fairland Street, Wymondham,
NR18 0AW, Tel: 01953 602272
myhillspetandgarden.co.uk
www.myhillspetandgarden.co.uk

Pets Corner

3 Middleton Street, Wymondham,
NR18 0AB · Tel: 01953 601770

Scruffy2Fluffy

38a Fairland Street, Wymondham
NR18 0AW · Tel: 07565 491248
www.scruffy2fluffy.co.uk

Plasterers

Jimmy Burt Plastering

71, Hubbard Close, Wymondham, NR18 0DX
Tel: 01953 713855 · Mobile: 07833 965606
www.jimmyburt.co.uk

Plumbing & Heating

Boilercare UK Ltd

Unit 2 Postmill Close, Wymondham,
NR18 0NL · Tel: 01953 607705

Giles O'Malley Plumbing and Heating

8 Burdock Close, Wymondham, NR18 0YE
Tel: 01953 857526 · Mobile: 07753 208624
giles.omalley@btinternet.com

Peter Rix Plumbing and Heating Services

6 Ketts Avenue, Wymondham, NR18 0NA
Tel: 01953 607339 · Mobile: 07887 905486

Wymondham Plumbing Supplies Ltd

Unit 11 Spur Trading Estate, Wymondham,
NR18 0NL · Tel: 01953 606656

Public Houses

Cross Keys

13 Market Place, Wymondham, NR18 0AX
Tel: 01953 604281

The Feathers

13 Town Green, Wymondham, NR18 0PN
Tel: 01953 605675

The Green Dragon

6 Church Street, Wymondham, NR18 0PH
Tel: 01953 607907
info@greendragonnorfolk.co.uk
www.greendragonnorfolk.co.uk

The Heart of Wymondham

29 Market Street, Wymondham,
NR18 0AJ · Tel: 01953 423083

The Railway

Station Road, Wymondham, NR18 0JY
Tel: 01953 605262
info@therailwaypub.com
www.therailwaypub.com

The Robert Kett

Lime Tree Avenue, Wymondham,
NR18 0HH · Tel: 01953 602957

Removals

John Ryder Removals

3 White Horse Street, NR18BJ
Tel: 01953 605553 · Mobile: 07889 378970
www.johnryder.co.uk

Van and a Man

Melville Cottage, Mere Road, Stow Bedon,
Attleborough, NR17 1HP · Tel: 01953 488919
toni@vanandaman.com
www.vanandaman.com



Norfolk Veg Box
local produce delivered

FREE DELIVERY TO YOUR DOOR

FRESH LOCAL SEASONAL VEG, FRUIT & SALADS

EXCELLENT VALUE FOR MONEY

SUPPORTING LOCAL FARMS & PRODUCERS

For more details or to place an order, visit our website or give us a call.
01953 457393 or 07712 443463
www.norfolkvegbox.com



www.norfolkvegbox.com



Creative flowers for all occasions

Ragged Robin Florist

Your Local Florist

Where design and quality is really important for all our customers.

Florists · Flower Delivery · Funeral Tributes
Wedding Flowers · Free Quotes
Free Parking · Free Initial Consultation

info@raggedrobinflorist.co.uk
www.raggedrobinflorist.co.uk
1 Wood Avens Way NR18 OXJ
Tel. 01953 669005



AMANDA JONES
soft furnishings

BESPOKE HANDMADE SOFT FURNISHINGS

CALL FOR FREE ADVICE AND ESTIMATES



T: 01953 605209
M: 07544 289948
amanda@norfolksoftfurnishings.co.uk




Restaurants & Takeaways

Ahmed Spice Indian Takeaway

50 Back Lane, Wymondham, NR18 0LB
Tel: 01953 600604 or 01953 600607
www.curriesonline.co.uk

Baba's Burger and Pizza Bar

48 Back Lane, Wymondham, NR18 0LB
Tel: 01953 601266

Big Fry Fish and Chip Shop

36 Market Street, Wymondham, NR18 0BB
Tel: 01953 603210

Chips Away Fish and Chips

9 Market Place, Wymondham, NR18 0AQ
Tel: 01953 602100

Flames Kebab and Pizza Takeaway

44 Lime Tree Avenue, Wymondham,
NR18 0HH · Tel: 01953 603003

Fortune Wok

7 Damgate Street, Wymondham, NR18 0BG
Tel: 01953 602391

Golden World Thai and Chinese Takeaway

40 Lime Tree Avenue, Wymondham,
NR18 0HH · Tel: 01953 857862

G.W Woodbine Fish and Chip Shop

38 Pople Street, Wymondham, NR18 0PS
Tel: 01953 603253

India Village

8 Pople Street, Wymondham, NR18 0PS
Tel: 01953 856007 or 01953 856008
info@indiavillage.net · www.indiavillage.net

Kindreds Restaurant

2 Bridewell Street, Wymondham,
NR18 0AR · Tel: 01953 601872

Marrakech Moroccan Restaurant

28 Market Street, Wymondham, NR18 0BB
Tel: 01953 602124
Marrakech-restaurant.co.uk

Nick's Diner

Church Road, Deopham, Wymondham,
NR18 9DT · Tel: 01953 851191
sara.armitage@btinternet.com
www.nicksdiner.co.uk

Number Twenty Four

24 Middleton Street, Wymondham,
NR18 0AD · Tel: 01953 607750
Website: www.number24.co.uk

Restaurants & Takeaways

Peking Dragon Chinese Takeaway

6 Fairland Street, Wymondham, NR18 0AN
Tel: 01953 606365

Station Bistro

The Railway Station, Station Road,
Wymondham, NR18 0JZ
Tel: 01953 606433

Suphannahong Thai Restaurant

2 Middleton Street, Wymondham,
NR18 0AD · Tel: 01953 607071
suphannahong@fsmail.net

The Golden Blossom Chinese Takeaway

28 Blackthorn Road, Wymondham,
NR18 0PY · Tel: 01953 600555

The Jolly Fryer Fish and Chip Shop

42 Lime Tree Avenue, Wymondham,
NR18 0HH · Tel: 01953 602922

Spice Zone Indian Takeaway

7a Damgate Street, Wymondham,
NR18 0BG
Tel: 01953 425822 or 01953 857499

Shapla Tandoori Restaurant and Takeaway

22-26 Town Green, Wymondham, NR18 0PW
Tel: 01953 601173 or 01953 601114

Skip Hire

Baldwin Skip Hire Ltd

Walnut Tree Farm, Silver Street, Besthorpe,
Attleborough, NR17 2LF
Tel: 01953 453625

Norman Wenn Ltd

Unit 2, Frans Green Industrial Estate,
Sandy Lane, East Tuddenham, Norwich,
NR20 3JG · Tel: 01603 881292
norman.wenn@btconnect.com
www.normanwenn-skiphire.co.uk

Surveyors

Frith - Blake

8 Damgate Street, NR180BG.
Tel 01953 433077 · info@frith-blake.co.uk



Poppa John LTD

24 Wharfedale Court, Market Street, Wymondham, Norfolk, NR18 0DD

Gentlemen barber, shaving specialist & stockists of all Geo. F. Trumper products, including aftershave & cologne for the discerning gentleman



Tel: 01953 605100

SUTON

MACHINERY

Innovating Since 1954

TRADE COUNTER

**HYDRAULIC HOSES
WHILE-U-WAIT**

HYDRAULIC RAM REPAIRS

**SPECIALISTS IN MATERIAL
HANDLING & SWEEPING
ATTACHMENTS**

Gurney Reeve & Co. Ltd.

Suton, Wymondham, Norfolk NR18 9SR

01953 603303

sales@sweepersuton.co.uk

www.sweepersuton.co.uk



**STAUFF
ANGLIA**

www.stauffanglia.co.uk

Pipeline Products For All Industries

Hydraulic | Pneumatic | Industrial | Chemical | Process | Hygiene

Hydraulic

Hoses, Tubes

Adaptors, Couplings

Pipe Clamps, Filters

Condition Monitoring,

Accessories, Flow

Control Valves, Ball

Valves

Industrial

Malleable Iron

Fittings, 1387 Tube,

Tube Supports and

U Bolts, Table Flanges,

Brass Ball Valves,

Suction & Delivery

Hoses

Offshore & Marine

Superlok Twin

Ferrule couplings

Stauff Anti Corrosion

Clamps, Stainless

Steel Tube and

Connectors, Ultra High

Pressure Hoses

Local trade Counter | National Deliveries | Export Supplies

Stauff Anglia Limited

Unit 405 Copper Smith Way | Wymondham | Norfolk | NR18 0WY

T +44(0) 01953 857158

| F +44(0) 01953 857159

| sales@stauffanglia.co.uk

Specialist Treatments

Back In Motion

The Windmill Surgery, London Road
NR18 OAF · Tel: 01953 604331
info@back-in-motion.co.uk
www.back-in-motion.co.uk

Footsure

Whartons Court, NR18 0UQ · 01953 425825
www.facebook.com/footsure

J R Reflexology

58 Wood Avens Way, Wymondham,
NR18 9XP · Tel: 01953 607168
www.jrreflexology.co.uk

Sports & Recreation

Fit Club

14 Chestnut Drive, Wymondham, NR18 9SB
Tel: 01953 606665

Granville Saddlery

Unit 4 Postmill Close, Wymondham,
NR18 0NL · Tel: 01953 602967
gsequestrian@btconnect.com
www.granvillesaddlery.co.uk

Howards Cycles

63 Back Lane, Wymondham, NR18 0LB
Tel: 01953 607127

Judith Fox Ballet School

The Foxes, Tuttlles Lane East, Wymondham,
NR18 0EW · Tel: 01953 607235
www.judithfoxballetschool.co.uk

Norfolk Sporting Guns

18a Market Street, Wymondham, NR18 0BB
Tel: 01953 605517
christanner1957@tiscali.co.uk
www.norfolk-sporting-guns.co.uk

Wymondham Leisure Centre and Swimming Pool

Norwich Road, Wymondham, NR18 0NT
Tel: 01953 607171

Wymondham Snooker Club

1 Town Green, Wymondham, NR18 0PN
Tel: 01953 602318 · crb225@talk21.com

Supermarkets

Co-op

6 Market Street, Wymondham,
NR18 0BB · Tel: 01953 856089

Morrisons Supermarket

Post Mill Close
Tel: 01953 828879

Waitrose

Norwich Road, Wymondham, NR18 0SH
Tel: 01953 607772

Taxi Companies

M & M's

Sycamore Avenue, Wymondham,
NR18 0HF · Tel: 01953 600779
Mobile: 07833 392647

Station Taxis

Old Foreman's Office, Platform 1, Station
Approach, Wymondham, NR18 0JZ
Tel: 01953 600007

Tan Cars

1 Bellrope Lane, Wymondham, NR18 0QX
Tel: 01953 602693
tan_cars@btconnect.com
www.tan-cars.co.uk

Toy Shops & Toy Manufacturers

Orchard Toys

Wymondham Business Park,
Chestnut Drive, Wymondham, NR18 9SB
Tel: 01953 423422

Puffs Toy Shop

3 Market Place, Wymondham, NR18 0AG
Tel: 01953 605678

Chapelfield

VETERINARY
PARTNERSHIP



Veterinary Surgeons:
Ian Jackson B.Vet Med-MRCVS

Telephone: (01953) 602139

- 24 Hour emergency service
- Disabled facilities
- Special diets
- Separate dog & cat wards
- Pet insurance
- Laboratory facilities
- Family pets
- Air-conditioned building
- Heated kennels
- Dental care
- Large car park

Open:

Monday to Friday
8am – 6.30pm

Saturday
9am – 12 noon

Purpose-built practice at:
Postmill Close, Wymondham, Norfolk NR18 0NL

E-mail: cvwymondham@btconnect.com

Web site: www.chapelfieldvet.co.uk

Veterinary Services

Chapelfield Veterinary Partnership Ltd

Postmill Close, Wymondham, NR18 0NL
Tel: 01953 602139
cvwymondham@btconnect.com
www.chapelfieldvet.co.uk

Wymondham Veterinary Clinic

11 Market Place, Wymondham, NR18 0AS
Tel: 01953 600066
enquiries@wymondhamvets.co.uk
www.wymondhamvets.co.uk

Waste Disposal

JR Evans

Hills End Farm, Attleborough
Tel: 01953 451920

Window Cleaning

Clearview Window Cleaning

Mobile: 07840 427785
clearview.wymondham@hotmail.com



Travel

Semence Coaches & Co. Ltd.

Ayton, NR18 OQH · Tel: 01953 602135

Travel Centre

4 Market Street, Wymondham, NR18 OBB
Tel : 01953 602690

Tree Surgeons

Wymondham Tree Services

4 Meadow Brown Way, NR18 0BX
Tel: 01953 857380 · Mobile: 07884 037216
david.wymondhamtreeservices@gmail.com
www.wymondhamtreeservices.co.uk

Veg. Delivery

Norfolk Veg Box

Rookery Farm, Great Ellingham,
NR17 1LB · Tel: 01953 457393
www.norfolkvegbox.com

Windows & Conservatories

Aluminium Windows and Doors Ltd

Unit 5 Fitzmaurice Court Industrial Estate,
Wymondham, NR18 0NN
Tel: 01953 606999

Conservatories etc

Unit 25 Penfold Drive, Wymondham,
NR18 0WZ · Tel: 01953 600505
www.conservatories.com

Sunfold Systems

Sunfold House, Chestnut Drive,
Wymondham, NR18 9SB
Tel: 01953 423423

Wine Shop

Reno Wine

15 Market Street, NR18 0AJ
01953 425995 · www.renowine.co.uk

Historical Wymondham Plaques & Points Of Interest



The Old Grammar School
Middleton Street,
now The Priory



Wymondham Abbey
In 1573, the church was in a poor state of repair. Queen Elizabeth I gave money for part of the east end to be repaired. Look high on the wall on the north side of the church to see her initials ER and date.



Market Cross
Built 1618



The Green Dragon
Church Street



Becket's Chapel
Now The Wymondham
Arts Centre



Railway Station
Built 1845

THE RAILWAY AT WYMONDHAM

01953 605262

Station Road, Wymondham
Norfolk, NR18 0JY

The Railway Public House is an award winning, Independent, Privately owned Freehouse serving Good Quality, Traditional Home Cooked Food of exceptional Value, seven days a week.

We also offer a good selection of Real Ales and a wide choice of Fine Wines from around the world.

We are an established Traditional English Pub suitable for all the family and our emphasis is to provide the ideal destination for eating out for Wymondham and the surrounding area.

- Traditional Home Cooked food
- Friendly Independent Family Pub
- 2 Mins from Wymondham Rail Station
- 5 Mins from Wymondham Town Centre
- Large Car Park
- Extensive Beer Gardens
- Secluded Courtyard and Garden Terrace
- Famous Tuesday Night Quiz
- Ideal location for Christmas Parties
- Lunch and Evening Food 7 days a week
- View our Menus on our Website



www.therailwaypub.com

MoneyProperties

Call us today for a free no obligation valuation

How MUCH has your home increased in VALUE?

01953 423006
www.moneyproperties.co.uk

Money properties

Star Throwers

Caring for those affected by Cancer



Call 01953 423304 | www.starthrowers.org.uk

Registered Charity No. 1127037

We are proud to support our local charity

Star Throwers

By donating 1% of our sales commission



Tel: 01953 423006 moneyproperties.co.uk
"The Local Name You Can Trust!"

