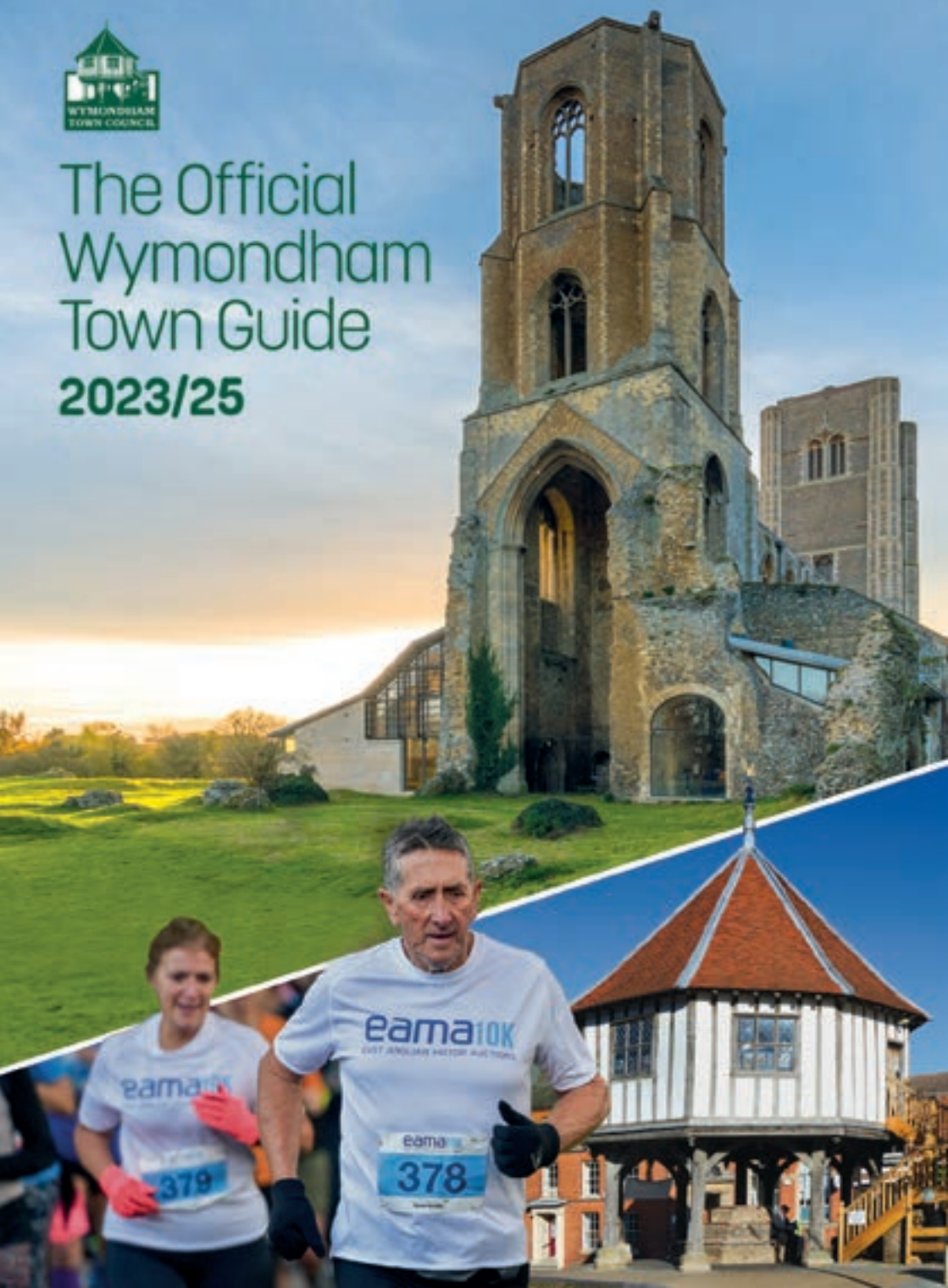




# The Official Wymondham Town Guide **2023/25**





FINANCIAL  
ASSOCIATES

changing peoples lives

## **Your Local** **Independent Financial Advisers**

In today's ever changing and uncertain world it's comforting to know that there is a company locally that is there for you for all your financial needs.

For **retirement planning, pensions, investments, wills** or your **tax and estate planning** we are here for you, your family and your finances!

Here are 3 ways in which we can help you immediately...

### **The ML 9**

Request your **9 ways to improve your finances and save you money** free guide

### **The ML 7**

Request your **7 ways to improve the performance of your pensions and investments** free guide

### **The ML Introductory Meeting**

To see how we can support you with your personal financial situation book a **complimentary introductory meeting** saving you over £257

To take advantage of any, or indeed all of the above, call or email us (contact details below) and **quote WTG23** and we'll do the rest.

We look forward to hearing from you!

**Simon, Craig & Hayley**  
**ML Financial Advisers**



*Retirement Planning Pensions Investments Wealth Management Tax & Estate Planning Wills*

**The Main Barn, Elm Farm Business Park, Norwich Common, Wymondham, Norfolk NR18 0SW**

**info@mlfa.co.uk**

**01953 711123**

**www.mlfa.co.uk**

# THE OFFICIAL WYMONDHAM TOWN GUIDE 2023/25

5	Welcome	64-65	Wymondham Dementia Support Group
7	Local Councils	67	Norfolk Primary Care Trust
9	Wymondham Wards	69	Health Care Services
13	Robert Kett	71	National FEPOW Memorial Church
14-17	Wymondham Heritage Museum	73	Hope Church
18-19	EAMA10k	74	Wym. Methodist Church
20-21	The Safer Neighbourhood Team	75	Wymondham Local Quaker Meeting
23	Wymondham Town Archive	75	The Alive Church Wymondham
25	Tourism Policy and Tourist Info	76	Church of Our Lady & St. Thomas
26-29	Wymondham History	77	Fairland United Reformed Church
31	Wymondham Abbey	78-79	Wymondham Baptist Church
32-33	Mid-Norfolk Railway	80	Hummingbird Preschool
34	Wymondham Nature Group	81	Education & Pre-School Playgroups
37	Wymondham Library	83	Mulberry Bush Day Nursery
39	Greening Wymondham	84	Ashleigh Primary School & Nursery
41	What's on?	85	Browick Rd. Primary & Nursery School
42-49	Wymondham Clubs of the 1950s	86	Spooner Row Primary School
51	Travelling to Wymondham	88	Wymondham High Academy
53	Venues For Hire	89	Education Services
54-57	Wymondham then and now	90	Star Throwers
58-59	Map of Wymondham area	91	Local Charities
61	Map of central Wymondham	92-113	Directory
63	Wymondham from above	114	Emergency & Helpful Numbers

---

The Official Wymondham Town Guide 2023/25  
© Wymondham Town Council.

The Official Wymondham Town Guide 2023/25 has been designed, produced and published by One Press Publications on behalf of Wymondham Town Council.

No part of this publication may be reproduced without the written permission of the copyright holder, Wymondham Town Council.

Every effort has been taken to ensure that the contents of this guide are accurate, but the publisher cannot be held responsible for errors or omissions.

Photos supplied by Chris Hoelzer

Aerial photography by Mike Page

Archive photos and historical information supplied by: Philip Yaxley

Photos cannot be reproduced without prior consent.

Editorial content: Wymondham Heritage Museum - Neil Haverson

Printed by Swallowtail Print

**One Press Publishing**  
**jean@onepresspublishing.co.uk**  
**Tel: 07760162784**

CECILAMEY.CO.UK



# SEE MORE, HEAR MORE

EYEWEAR, EYECARE & HEARING CARE

10 MARKET PLACE  
WYMONDHAM  
01953 605181

CECIL AMEY

*Looking Good!  
Hearing Well!*



# WYMONDHAM

## Welcome to the Official Wymondham Town Guide 2023 -25



**It has been published by One Press Publications on behalf of Wymondham Town Council.**

One of Norfolk's most historic towns, picturesque Wymondham is set in the River Tiffey Valley and the distinctive twin towers of its medieval abbey dominate the skyline. Wymondham is the largest market town in South Norfolk, covering an area of 4,431 hectares. Its fast-growing population now exceeds 17,000.

The town benefits from its rail links to Cambridge and its situation on the main A11 trunk road between Norwich and London. The Great Fire of Wymondham in 1615 destroyed 300 properties including the original market cross, the vicarage and the Guild House.

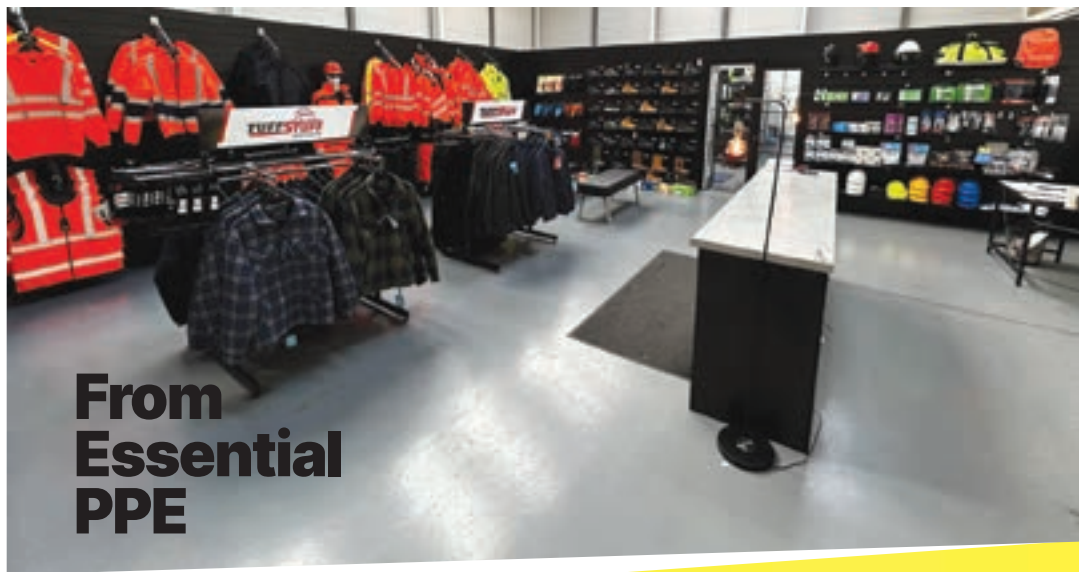
The town is also famed for its former Bridewell jail, built in 1785. It was the first prison in the country with separate cells for inmates. The building now houses the town's Heritage Museum.

Wymondham Town Council is the statutory local government elected body for the Parish of Wymondham. Its statutory powers and some of its responsibilities are set out in the Local Government section on page 7. Running the only local government office in the town, it is in the front line in dealing with issues, providing information, services and speaking up for the Wymondham parish.

The Town Council is pleased to welcome this latest in an unbroken line of guides which have been published for over 60 years. These have been a vital source of information and help for Wymondham people. We are sure that this latest guide will be welcomed by both residents of long standing and by the many new residents and visitors which the town welcomes in increasing numbers. For information on the Town Council, please call 01953 603302.

**We hope you enjoy this edition!**

Trevor Gurney, Town Clerk.  
[www.wymondhamtowncouncil.org](http://www.wymondhamtowncouncil.org)



**From  
Essential  
PPE**



**To Embroidered  
& Printed Tops,  
Coats, Hats,  
Bags & Mostly  
Anything!!**

**We've got you covered!**

**EVERYONE welcome at MR OVERALLS**

**Come visit us at 4 Chestnut Drive, Wymondham NR18 9SB**

**Call: 01953 607050 [www.mroveralls.co.uk](http://www.mroveralls.co.uk) [trade@mroveralls.co.uk](mailto:trade@mroveralls.co.uk)**

**Workwear | Footwear | Gloves | Personal Protection**

**Disposables | Hygiene & First Aid**

**Printing & Embroidery | Signs | Bespoke Products and more!**



# Local Councils

**Like most of England outside the cities, Wymondham is administered within a three tier system of local government. Norfolk County Council, South Norfolk District Council and Wymondham Town Council all have separate buildings, councillors and officers.**

Although all three work within a standard code of practice which ensures consistency of operation, each has its own particular range of tasks and responsibilities, which in practice overlap in certain areas. All three tiers of local government work together, but each authority is autonomous and independent.

## Wymondham Town Council

Wymondham Town Council runs the town's markets, most of its open spaces and play areas, the cemetery, allotments and wildlife site. It plays a major part in promoting local information services and runs the Tourist Information Centre in the Market Cross.

Contact: Trevor Gurney, Town Clerk, Ketts Park, Harts Farm Rd. NR18 0UT  
Tel : 01953 603302

Opening hours: Mon-Fri 9.30am to 4pm  
[office@wymondhamtc.co.uk](mailto:office@wymondhamtc.co.uk)  
[www.wymondhamtowncouncil.org](http://www.wymondhamtowncouncil.org)



## South Norfolk Council

South Norfolk District Council one of six district councils in Norfolk, is responsible for planning (including most planning applications), housing, council tax and refuse collection, electoral registration, licensing, most leisure centres and pools and street cleaning.

Telephone : 01508 533701  
Minicom/Textphone 01508 533622  
Freephone : 0800 389 6109  
[www.southnorfolkandbroadland.gov.uk](http://www.southnorfolkandbroadland.gov.uk)

## Norfolk County Council

Norfolk County Council is responsible for major county-wide services such as education, highways, police, fire and rescue, social services and libraries. It co-ordinates strategic, transport and emergency planning.

Tel : 034 4800 8020 (Mon - Fri 9am – 5pm) Online form : [www.norfolk.gov.uk](http://www.norfolk.gov.uk)





**SOLARWISE**

Roofing & Building Services Ltd



**Norfolk & Suffolk: 07377 338275**  
**Essex: 01206 628544**

***All work Guaranteed • No Deposits***  
***14 Day cooling off period***

We have a reliable, honest and highly skilled team of roofers, which enables us to offer you one of the most professional and cost effective services throughout the local area.

We offer the complete roofing service; from major re-roofing projects to minor domestic roof repairs that are not only competitively priced but also providing you with peace of mind.

**Specialists in all aspects of Solar Panels**

Solar panel systems, being a source of green electricity, save carbon dioxide emissions and mitigate climate change. You generate your own electricity, becoming more self-sufficient that means lower bills.

All this can be achieved whilst offering substantial financial savings, meaning you can be green and rewarded for it at the same time.

- New Roofs
- Flat Roofs
- Roof Repairs
- Ridge Tiles
- Chimneys
- Repointing
- Fascias
- Soffits
- Cladding
- Guttering

- Panel Cleaning
- Panel Repairs
- Installations
- Solar Cleaning
- Bird Protection
- Solar Electrics
- Panel Laminating
- Solar Inverters
- Cable Tying
- 24/7 Call-outs
- Greenpeace energy to help climate change

**Family run business**

[shayne@solarwiseservices.co.uk](mailto:shayne@solarwiseservices.co.uk)

- Registered Company -

**FREE ESTIMATES**



# Wymondham Wards

**For electoral purposes Wymondham is split into several wards – Central, East, North & South. Each ward is represented by a number of Councillors resulting in a total of 14 who form Wymondham Town Council.**

Representation on South Norfolk Council consists of 6 Councillors with 2 being elected for each of the following areas: Central, North & South (included Town East ward).

In respect of Norfolk County Council Central, East & North are combined to form the Wymondham Division with South being part of Forehoe Division.

Wymondham is situated in the Parliamentary constituency of Mid Norfolk whose elected Member is George Freeman. His office is situated at 8 Damgate Street, Wymondham, telephone number **(01953) 600617**.

To find out which ward you are in please contact the Council on **(01953) 603302** or email **office@wymondhamtc.co.uk**



Details of Councillors currently representing each ward can be found on the Town Councils website – **[www.wymondhamtowncouncil.org](http://www.wymondhamtowncouncil.org)**

Elections for the Town Council take place every 4 years with the next scheduled for May 2023.

# JARROLD

*The home and furniture destination, full of choice and inspiration, to create a home which is everything you want and need.*




*Discover luxurious and durable carpets, floorings and rugs with our **free** home selection and estimating services.*





*Furniture  
Carpets & Flooring  
Beds & Mattresses  
Linens & Soft furnishings  
Cookshop  
Home Accessories*

# JARROLD WYMONDHAM HOME FURNISHINGS



PARKER KNOLL  
TETRAD  
ORLA KIELY UPHOLSTERY  
SANDERSON  
LAURA ASHLEY  
WILLIAM MORRIS

*Behind our deceptively small  
shop front is one of the largest  
showrooms in town; home to a  
diverse range of quality brands  
where our knowledgeable,  
welcoming instore experts can  
help you furnish and equip  
your home in style.*



BREVILLE  
JUDGE  
KENWOOD  
MORPHY RICHARDS  
PRESTIGE  
RUSSELL HOBBS  
STELLA



*Shop Instore, Online or Click & Collect*  
MIDDLETON STREET • WYMONDHAM  
01953 603251 • JARROLD.CO.UK





# GARDEN ROOM designs

Designed and built to inspire



- Garden Rooms • Orangeries • Conservatory Conversions
- Free Standing Studios & Buildings



Contact us for a free consultation and quotation

**01603 720005**

[info@gardenroomdesigns.co.uk](mailto:info@gardenroomdesigns.co.uk)

[www.gardenroomdesigns.co.uk](http://www.gardenroomdesigns.co.uk)







# Robert Kett

Robert Kett is Wymondham's most famous and perhaps its greatest son.

He was a prominent figure in the town between 1520 and 1549, actively involved in its agricultural, commercial, civic and religious life.

During the 1549 summer fair, Kett put himself at the head of a protest movement against the injustices of his day, especially the enclosure of common land.

Up to 15,000 people joined him at a camp on Mousehold Heath outside Norwich, inspired by his vision of a fairer society.

But after dominating the city for six weeks, Kett's rebel force was defeated by a large royal army.

Kett was found guilty of treason and was executed at Norwich Castle on 7<sup>th</sup> December 1549.

On the same day, his brother William was hanged from the west tower of the abbey church.

A commemorative plaque to the Kett brothers was unveiled at Becket's Chapel during the town's Kett'99 celebrations, and pupils from Robert Kett School lay flowers there each year on the anniversary of the Kett's' death.

# Wymondham Heritage Museum

What better place to house a museum than the town's ancient Bridewell?

Steeped in history, the building, since the 1600s, has been a prison, a police station and a magistrate's court.

Having fallen into disrepair it was bought by the Wymondham Bridewell Preservation Trust in 1994. It was renovated and in 1996 it became the home of Wymondham Heritage Museum.

The museum is run entirely by volunteers and receives no funding other than from admission fees and donations.

In its near 30-years existence, the museum has constantly evolved. There are permanent displays such as the recreated grocery shop and the hardware store, both based on shops that were once prominent in the town.

The Brushroom showcases the town's once most important industry with an audio commentary describing the brush-making process. In addition there is a wide range of brushes and artefacts on view.

Other exhibitions are refreshed regularly and new ones created. Visitors can take a step back in cinema history with a display featuring the town's former Regal Cinema. Photographs, posters and memorabilia from the heyday of the silver screen are on show.





The Lost Pubs of Wymondham display has been turned into a permanent exhibition. It reveals that in 1622 there were 33 pubs, today there are just six. There are pictures of many of the old inns together with stories about their history and some of the stranger things that happened in them.

- What happened to “Treacle Jack” after drinking his last half pint in 1899 at the White Horse?



- Which Damgate pub was a bullock driven into and why?

- A major permanent display tells the story of the town’s most famous citizen, Robert Kett. Why did this Yeoman farmer organise a rebellion in 1549, leading to him being hanged at Norwich Castle?

In addition to being the home of the town’s heritage, the history of The Bridewell itself can be seen at almost every turn.



There are the steps prison reformer John Howard walked down when he visited the prison in 1779 and declared it: ‘One of the vilest prisons in England’.

As a result, local man Sir Thomas Beavor, produced plans for a refurbished prison plus a set of management rules which saw The Bridewell become a model prison for gaols throughout the UK and in America.

His efforts are on show in one of the old cells accessed through an original door dating back to 1810.

The haunting audio commentary in the recreated dungeon tells of life for prisoners in the 19th century as does the commentary in the cell which was for prisoners on remand when the building housed a police station.



One of the most fascinating exhibits is some playing cards found behind a window frame during renovations. The inmates were given copies of the New Testament, presumably to improve themselves. During the day they toiled in the laundry; for entertainment they turned to the New Testament – but not necessarily to read it.

They tore pages from their bibles and stitched them together in pairs to make them thicker, probably with thread they spirited away from their sewing duties. Using charcoal for clubs and spades and it is thought blood for hearts and diamonds, they fashioned a pack of playing cards.

The Bridewell Tearoom, where visitors can enjoy a cuppa or soft drink with a slice of homemade cake, a freshly baked scone or just a snack, was once the exercise yard for the remand prisoners.

Evidence of more cells can be seen in the main gallery in the form of brickwork showing where the walls once were.

Outside, the Courtyard Garden, where visitors can relax on a sunny day and enjoy their snack, was where the female prisoners hung the washing when they did the laundry for the both The Bridewell and Norwich Prison.

New displays for 2023/4 include a celebration exhibition for the coronation of King Charles with photographs of when the King came to Wymondham in 1992 and 1997.

The rebuilt agricultural display reflects the area's rich farming heritage with many artefacts from an age before mechanisation.

In the museum shop there are souvenirs and a wide range of books about many aspects of the town and the area's history.

There's plenty for the children to see and do. They'll love the spooky dungeon. They can operate the 1960s switchboard that stood in the Abbey Hotel; work the Gane machine in the Brushroom that inserts the bristles into the stock, and what treasures are in the Discovery chest?

If they've got plenty of energy, let them have a go at the crank. It's a set of paddles on a central spindle and the box filled with sand or small gravel. It was a form of hard labour and the convicts had to turn it 1800 times to earn breakfast, a further 4500 for a midday meal and 5400 times for supper. And then 2700 times after that!

There's a quiz with questions to answer as they go round the museum and when they finish off their visit with a snack in the Tearoom, they can drop a coin in the wishing well and wish for longer school holidays!

**For more information about the museums plus opening times and admission prices go to [thewhm.org.uk](http://thewhm.org.uk)**

---

Photos and copy by Neil Haverson





# EAMA10k

**The EAMA10k is a 10 kilometre run around Wymondham, held by the South Norfolk Council, and sponsored by East Anglian Motor Auctions.**

This yearly event is open to everyone; whether you are part of a running club, or simply wanting to challenge yourself!

East Anglian Motor Auctions have been operating since 1946, and offer "the best way to sell your car privately" as quoted by one of their recent happy customers."



**"The best way to ★★★★★  
sell your car privately"**



Scan me with your  
phone's camera!



Call 01953 859180 or visit [www.eama-norwich.co.uk](http://www.eama-norwich.co.uk)

**eama**  
EAST ANGLIAN MOTOR AUCTIONS









## **I am the local Beat Manager for Wymondham, covering the wards of Hingham and Deopham, Wicklewood, and South, North and Central Wymondham.**

The Safer Neighbourhood Team's role is to ensure that the area continues to receive a very high standard of frontline policing, and to continually work with partner agencies to identify ways of reducing crime and anti-social behaviour.

As the Beat Manager, my role is to engage with local communities to solve issues and priorities within your neighbourhood. My aim is to keep your neighbourhood a safe place to live, work and visit. Please feel free to raise any problems when you see me out on patrol, or get in contact via email.

The South Norfolk Engagement Officer, PC Vicky Bailey, can also be contacted for local enquiries that affect your neighbourhood. As the Engagement Officer, Vicky's role is to organise police presence at events and meetings, as well as provide a link between the community and police officers.

The Safer Neighbourhood Team also consists of patrol officers who respond to your calls for service 24 hours a day. They investigate the crimes in your area and work with all South Norfolk Beat Managers to deliver local priorities.

Details about the team, meetings and the latest news from your area can be found on the Wymondham pages of Norfolk Police website, [www.norfolk.police.uk](http://www.norfolk.police.uk).



As well as email, you can contact us by telephone, calling the non-emergency number 101. We are always keen to discuss any concerns you may have, so please feel free to contact us or have a chat when we are out on patrol.

### **PC Gordon Rance**



South Norfolk Police



@SouthNorfPolice



[SNTWymondham@norfolk.police.uk](mailto:SNTWymondham@norfolk.police.uk)

# CareLift

Services Limited



## Stair Lifts

New and Reconditioned

**Home Lifts - Wheelchair Lifts**

**Patient Handling**

**01603 433603**

**[www.careliftservices.co.uk](http://www.careliftservices.co.uk)**

# Wymondham Town Archive

**Wymondham's Town Archive has been ranked as one of the best in Norfolk outside those of the Norfolk Record Office.**

The Town Archive which is based in the Town Council Offices is steadily expanding. Some documents relate to the 17th century, but most are from the 18th and 19th centuries with additions down to the present day.

The Archive contains some 50,000 documents with a database of the names of 70,000 Wymondham people as well as 4,000 pictures and slides, most of which are searchable on-line.

The Archive is open to visitors in person on **Tuesdays from 10am to 1pm.**



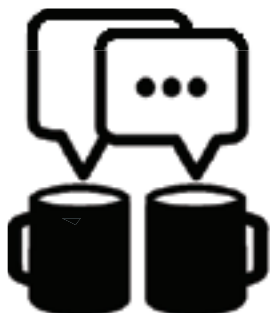
**Enquiries are welcome by phone, e-mail and post. Wymondham Town Archive, Council Offices, Ketts Park, Harts Farm Road, Wymondham, NR18 OUT.**

**Telephone: Richard Fowle 01953 603000 or Mary Garner 01953 604535**

**Pictures: Wymondham Town Archive**

**[wymondhamarchive.norfolkparishes.gov.uk](http://wymondhamarchive.norfolkparishes.gov.uk) | [wymondhamarchive@hotmail.co.uk](mailto:wymondhamarchive@hotmail.co.uk)**





# Cup-O-T:

## Wellness and Therapy Services.

Cup-O-T: Wellness and Therapy Services is a not-for-profit mental health service. We provide mental health interventions and wellness sessions to young people, families and communities from our mobile therapy van in Norfolk and woodlands in Wymondham.

- Occupational therapy
- EMDR therapy
- Peer Support
- Workshops
- Training

ALL ENQUIRIES:

[info@Cup-O-T.co.uk](mailto:info@Cup-O-T.co.uk)

[www.Cup-O-T.co.uk](http://www.Cup-O-T.co.uk)



### Our mission:

- ✓ To make mental health support accessible at an early stage.
- ✓ To support young people to achieve their potential.
- ✓ To make mental health support accessible in rural areas.
- ✓ To increase mental wellness in communities.

Cup-O-T at the Forest School For Life, Silfield St, Silfield, Wymondham NR18 9NL (visits by appointment)

# Tourism Policy

Tourism is an integral part of our national and local economy. The county, district and town councils each have policies for developing the contribution which tourism can make to our local community.

Norfolk Tourism, a public and private sector partnership, actively markets the county and supports the development of the tourism 'product'. Visit Norwich is the main marketing body for Norwich, South Norfolk and Broadland.

**Please visit: [www.visitnorwich.co.uk](http://www.visitnorwich.co.uk)**

Wymondham has great appeal as a tourist destination, thanks to major attractions like the Abbey and other fine historic buildings and streetscapes, the museum, railways and green environment.

Much of this appeal is fragile and might easily be overwhelmed by large numbers of visitors. Promoting sustainable tourism, fitting in with the daily life of Wymondham, is the Town Council's key aim.



## Tourist Info

The Market Cross is home to the Tourist Information Centre (TIC). It is run by the Town Council, and is a valuable resource for both local people and visitors. As a networked TIC it carries information about other UK holiday destinations and has a wide range of brochures and guides along with souvenirs.

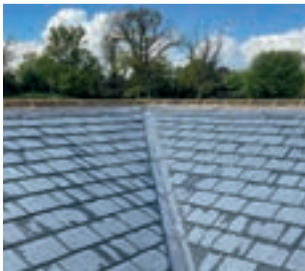
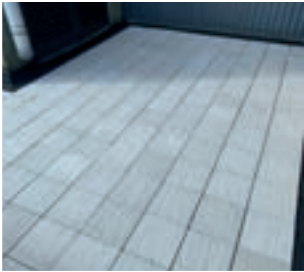
**For opening times : 01953 604721**

**[www.wymondhamtowncouncil.org](http://www.wymondhamtowncouncil.org)  
[office@wymondhamtc.co.uk](mailto:office@wymondhamtc.co.uk)**

**Wymondham,**  
**pronounced “Windham”,**  
**is the largest market**  
**town in South Norfolk,**  
**with a population of over**  
**17,000; also serving a**  
**rural hinterland of**  
**a further 15,000.**

**It is a fast-growing community but**  
**still retains much of the character**  
**of an ancient market town.**

One of Norfolk’s most historic towns,  
picturesque Wymondham is set in the River  
Tiffey Valley and the distinctive twin towers  
of its medieval abbey dominate the skyline.



**rgleverettLtd**  
ROOFING & ROOFLINE

**Pitched and Flat Roof  
Specialists**

RG Leverett Ltd is a family run roofing company that has grown to become one of the leading roofing contractors operating in Norfolk and Suffolk. We pride ourselves on our customer service and our roofers are highly skilled in both flat and pitched roofing. Whatever type of property you have, we can recommend the right roof for it.



FLAT ROOFING



PITCHED ROOFING



BALCONIES



ROOF LIGHTS



ROOFLINE PRODUCTS

[www.roofsuk.co.uk](http://www.roofsuk.co.uk)  
**01603 418818**





Wymondham is the largest market town in South Norfolk, covering an area of 4,431 hectares. Its fast-growing population now exceeds 17,000.

There is no agreement as to the origins of the name. It could have derived from Wimond ham, the homestead of Wimond, a sometimes forgotten Saxon chieftain who settled with his followers in the locality.

Another possibility is 'the home of the Waegmundings', a family of the Geats, who came from the Baltic to settle in Norfolk and were at one time ruled by Beowulf.

## Markets

Henry VI granted the town the right to hold a market in 1440, and a market has been held every Friday since then. Wymondham was the first town in Norfolk to stage a farmers market in March 2000. Farmers markets are now regularly held on the third Saturday of the month from 9am to 1pm. For more information on markets, contact the Town Clerk on **01953 603302**.

A third theory is that the word is of combined Celtic and Norse origin meaning 'the holm or meadow between the rivers'. Holm, sometimes corrupted to ham, frequently signified a fork of land formed by the junction of two rivers.

Wymondham does lie at confluence of two small streams, the Tiffey and the Bays. There is a parallel case in the name of an existing Danish village, Vindeholm.

## Industry

Wymondham has had a number of industries over the centuries. The town was once a renowned centre for woodturning and brushmaking, and for producing crepe, satin and bombazine. In the mid 19th century, there were said to have been some 600 cottage looms in the town. Unfortunately, the weaving, woodturning and brushmaking industries have long since gone, but today the area is proud to be the home of the world-famous Lotus cars.



# Key dates in Wymondham's long and fascinating history

You can find out a great deal more from The Wymondham Heritage Museum, telephone **01953 607494** or **600205**; also the Wymondham Town Archive housed in the Town Council office, and the Abbey Archive.

1107

Abbey foundation. William d'Albini, Chief Butler to Henry I, founded the abbey as a cell for his brother's abbey in St. Albans. Dedicated at that time to the Blessed Virgin Mary, this was later changed to St. Mary and St. Thomas of Canterbury.

1174

Becket's Chapel was built. This was the town's library until 2008.

1286

First mention of a market cross in Wymondham.

1445

Abbey Church west tower was constructed. The abbey church was intended to serve both the Benedictine monks and Wymondham's parishioners. But there were many quarrels between the two factions, often concerning the hanging and ringing of the parish bells. These problems were eventually solved when the people erected the great west tower in 1445, and the abbey gained its independence from St. Albans in 1448.



1538

Dissolution of the Monastries. The abbey church was granted to the people of Wymondham. The monastic buildings were demolished.

1549

Kett's Rebellion.  
See page 13 for more information.

1615

The Great Fire destroyed over 300 buildings in the town centre, including the Market Cross. The Market Cross was replaced by the current building, which cost £25 to construct. It was fully restored in 1988-9 at a cost of £95,000. The Market Cross is now home to the town's Tourist Information Centre.

1785

The Bridewell, Wymondham's model prison, was built. It was the first prison in the county with separate cells for inmates. The building served as a police station from 1850 – 1963, and a magistrates court from 1879 – 1992. Wymondham Bridewell Preservation Trust purchased the Bridewell in 1994, restoring and converting it for community use.

1845

The railway arrived in Wymondham via the Norwich to Ely line.

1847

Wymondham to Dereham railway line opened, which is now operated by the Mid-Norfolk Railway Preservation Trust.

1934

Completion of Sir Ninian Cooper's great gilded screen at the abbey church, a memorial to Wymondham men killed in World War One.





Come along and try Bowls, both Indoor and Outdoor at one of Norfolk's Premier Bowls facility. It is a great, enjoyable game, excellent gentle exercise and make some new friends. There is a bar open in the evening and a busy social calendar including bingo, Quiz nights, live music, Pool, Darts and Crib Nights and a Line dancing Class. This is one of the best sporting facilities in the area so why not come along and join in the fun!

- New members of all ages are very welcome
- Give us a ring to make an appointment or call in
- 6 indoor rinks used all year round
- Outside green April - September
- Coaching given, Roll-ups several times a week for all levels of play
- Annual Playing Membership is £65, or less if not a full year
- To start with all you need to bring is a pair of clean flat soled shoes
- Social Membership £10pa
- Junior Membership £5.00pa
- Newly Refurbished Clubroom for hire for Social Events, Clubs and Societies and business.



Wymondham Delf Bowls Club

54b Norwich Rd, Wymondham, NR18 0NT

Tel: 01953 602099 • Office open 9.30am - 12pm, Monday-Friday  
office@wymondhamdelf.com • www.wymondhamdelf.com



**We offer self-storage in  
the Wymondham, Barnham  
Broom and Stalham areas**

- Competitive rates
- Friendly Service!
- Stated Access

To discuss your  
requirements call

Rebecca:  
07786255011  
(Wym/BB)

or  
Sam:  
07881786690  
(Stalham)



email: [sales@storegalore.co.uk](mailto:sales@storegalore.co.uk)  
[www.storegalore.co.uk](http://www.storegalore.co.uk)



**MYHILLS**  
pet and garden



*For great prices on your  
everyday Pet and Garden  
needs, pop in and see our  
expansive shop at*

**36 Fairland Street, Wymondham**

**Tel: 01953 602272**



*Branches*

High Street, Attleborough  
Tel: 01953 453104

35 Mere Street, Diss  
Tel: 01379 642465

7, Church Street, Dereham  
Tel: 01362 692975

12, London Street, Swaffham  
Tel: 01760 721272

35, High Street, Watton  
Tel: 01953 881552

or visit our website : [www.myhillspetandgarden.co.uk](http://www.myhillspetandgarden.co.uk)



My Pet, My Garden, MYHILLS



# WYMONDHAM ABBEY

Come and visit the jewel in Wymondham's crown. The Abbey is open to visitors:

Summer: Monday to Saturday 10am – 4pm

Winter: Monday to Saturday 10am - 3pm





## *The Mid-Norfolk Railway* *The Dereham - Wymondham Abbey Line*

*Open from the end of February to Christmas, join us for:*

*Steam Train Rides (summer only) · Diesel Train Rides · Beer Festival · Steam & Diesel Galas · Jazz & Folk Trains  
Fish & Chips Specials · Murder Mystery Train · On-Train Cream Teas & High Teas · Vintage Bus Day  
1940s Weekend · Classic Car Days · The Polar Express™*

*Getting Married? Dereham Station is now a licensed marriage and civil partnership venue,  
hire the railway for your wedding and / or reception.*

*Discounts available for on-train birthday and anniversary parties, family, group and club outings.*

*For full details, email [info@mnr.org.uk](mailto:info@mnr.org.uk), visit our website at [www.midnorfolkrailway.co.uk](http://www.midnorfolkrailway.co.uk) or call 07585 855350 / 01362 851723*

*Registered Charity 1046931*





# Mid-Norfolk Railway

**2021 saw the amazing success of the The Polar Express™ Train Ride with 30,000 tickets sold and 2022 saw 42,000 visitors with 90 trains running from Dereham to the North Pole. Tickets for 2023 will be going on sale in March so book early to avoid disappointment.**

We look forward to our special events, the Steam and Diesel Galas, the 1940s Weekend and the Beer Festival plus our regular and ever popular Cream and High Teas on the train, Fish 'n Chips Specials, Jazz Trains, Folk Train and Vintage Bus and Classic Car Days.





## The Wymondham Nature Group

The Wymondham Nature Group (WyNG) is the local group of the Norfolk Wildlife Trust, a charity working to protect and enhance Norfolk's wild places for the benefit of wildlife and people.

You do not need to be an expert to join us but just have a passion for wildlife and the environment. We hold nine very entertaining and informative illustrated talks a year covering many and varied aspects of nature.

The meetings are held at the Town Green Centre, Wymondham on the 2nd Thursday of the month (September to May) at 7.30pm, entry is just £2 and everyone is most welcome to attend. We have our own colourful publication, SWIFT, which includes all manner of interesting sightings and observations and we also organise several guided walks throughout the year.

We have two teams of enthusiastic practical conservation volunteers who help manage Tolls Meadow, Wymondham's very own local nature reserve in the heart of the town, as well as Ashwellthorpe Lower Wood, our nearest Norfolk Wildlife Trust reserve.

New volunteers are always warmly received, no previous experience is necessary and work can be found for all levels of fitness. Recently, Tolls Meadow was dubbed one of the "Seven Wonders of Wymondham". As a fen meadow, a rare habitat, through which the River Tiffey flows, it provides a home to a whole host of interesting wildlife including the endangered water vole (our very own "Ratty" from "The Wind in the Willows").

There is a wide range of wild flowers, including orchid species, marsh marigold, meadowsweet and ragged robin which in turn attract all sorts of fascinating insects and birds. Maintaining the wealth of biodiversity in our area is of utmost importance to us and we engage with the local planning system to ensure wildlife is not overlooked. Why not join us and help safeguard our precious and beautiful environment?

**Find us on Facebook, follow us on Twitter. Ann Carpenter on  
01508 488337 [wymondham@norfolkwildlifetrust.org.uk](mailto:wymondham@norfolkwildlifetrust.org.uk)**



Changing dogs lives together

## A new place to have fun and exercise your dog

Our premium, secure, 3 acre field  
is offered for exclusive hire.  
(Includes half an acre of woodland)

To book call **07526 588455**  
or visit [www.wagdale.co.uk](http://www.wagdale.co.uk)

Wagdale, Wymondham Road, Rush Green,  
Barnham Broom, Norfolk NR9 4EA



The UK's #1 rated  
organic veg box



Organic veg boxes delivered  
throughout Norfolk.

Call Claire in Wymondham  
on 01953 859980  
or visit [riverford.co.uk](http://riverford.co.uk)



**SPECIAL  
OFFER –  
Free Installation**  
\*Limited Period Only



## Alcosa Media Walls

Enhance your living space with the latest interior design trend.

An integrated media wall offers a true living space focal point and incorporates the fireplace as an integral part of your entertainment zone.

Our pre constructed units, delivered and installed by us -  
No fuss no mess! 1 day installation.

Visit our showroom today and see for yourself how a  
Media Wall can transform your living space.

**01953 602482 | [www.alcosa.co.uk](http://www.alcosa.co.uk)**

**ALCOSA**  
INSPIRING YOUR HOME



Penfold Drive,  
Wymondham,  
Norfolk NR18 0WZ

# Wymondham Library

Address: Back Lane Wymondham NR18 0QB • Telephone: 01953 603 319

Email: [libraries@norfolk.gov.uk](mailto:libraries@norfolk.gov.uk) • Website: [www.norfolk.gov.uk/libraries](http://www.norfolk.gov.uk/libraries)

## Opening Times

Monday to Friday: 10am to 7pm  
(8am - 10am Open Library access only)

Saturdays: 10am to 4pm  
(8am - 10am Open Library access only)

Sundays: 10am to 4pm  
Open Library access only

Your local library.  
It's free and easy to join.

- ✓ Escape in a book.
- ✓ Access free PCs and high-speed broadband.
- ✓ Bring your children to story and rhyme times.
- ✓ Research your local history.
- ✓ Enjoy free events.



# JOHN RYDER REMOVALS

[WWW.JOHNRYDER.CO.UK](http://WWW.JOHNRYDER.CO.UK)

**DOMESTIC REMOVALS LOCAL & UK**

- Removals & Storage
- 3.5 ton and 7.5 ton Vehicles
- Free Estimates and Advice
- Packing Service

**HOUSE CLEARANCE SPECIALISTS**

- Surplus Furniture Bought or Taken to Auction
- Secondhand Furniture Sold
- Skips Arranged

**TEL: 01953 605553**

**FAX: 01953 605553**

**MOBILE: 07889 378970**

Unit East End 1, Vicarage Farm, The Green, Wicklewood

# VAN AND A MAN

MOVE ANYTHING,  
ANYTIME, ANYWHERE

**NATIONWIDE COVERAGE**

- SINGLE ITEM OR FULL HOUSEHOLD REMOVALS
- SAME DAY SERVICE
- SEVEN DAYS / EVENINGS
- STUDENT MOVES
- OFFICE / PIANO MOVES
- FREE INSTANT QUOTES
- ALL CLEARANCES UNDERTAKEN
- ONE OR TWO MAN TEAM WHEN REQUIRED



Tel: **01953 488919 / 01362 687222**

Mobile: **07751 171606**

[www.vanandaman.com](http://www.vanandaman.com)

Email: [gary@vanandaman.com](mailto:gary@vanandaman.com)

## Les Cooper Builders Ltd

**Bathrooms & Kitchens  
from Start to Finish**

Design & Supply

All work including Tiling, Plumbing,  
Carpentry, Plastering, Electrics

General Building work covered:

Brickwork, Plaster, Carpentry, Painting and Decorating

Alterations to buildings and extensions

**01953 606480 07740 986865**

77 High Street, Wicklewood, Norfolk, NR18 9QA

[www.wymondhambathrooms.co.uk](http://www.wymondhambathrooms.co.uk) ~ [lescooperbuilders@tiscali.co.uk](mailto:lescooperbuilders@tiscali.co.uk)







# Greening Wymondham

We are a community volunteer group promoting and facilitating green infrastructure improvements and appreciation of the natural environment in Wymondham, benefiting the whole community.

Our volunteers regularly meet and carry out environmental and sustainable projects in our town, promote re-cycling activities and raise greater awareness of environmental issues.

We have a central group who act as a committee organising activities, managing our funds and planning future activities. This is then shared with a wider community of interested people who have the opportunity to join our specific activities.

Our activities and achievements are varied and numerous, from organising Climate Change seminars, litter picks, tree, hedge and bulb planting, footpath clearance, woodland management at Kett's Park, presenting every year 6 pupil in Wymondham with a small bare root tree to creating a community orchard at Browick Road.

We are also currently collaborating with South Norfolk Council and Wymondham Town Council with the view to implementing projects to improve and enhance local green spaces, including creating wildflower areas and tree planting.

So if you are interested in creating a greener, brighter environment for Wymondham we have volunteering opportunities for all abilities and experience, or are generally interested in our activities visit our Facebook page; **Greening Wymondham**, or visit; **[www.greeningwymondham.org](http://www.greeningwymondham.org)**

**MERC-PRO LTD**

- Mercedes Independent Specialist •
- Prestige Car Servicing •
- Diagnostics & Repairs •

**01953 423 475**

Unit 1a Wymondham Business Centre  
Eleven Mile Lane NR18 9JL



**Chapelfield**  
VETERINARY  
PARTNERSHIP

• Wymondham: 01953 602139 •

We pride ourselves in getting to know you and your animals and offering a lifetime of veterinary care and attention.

Register your pets with us today and have peace of mind that our friendly teams will provide the best possible healthcare and advice for all your family pets.

Enjoy the cost saving benefits of our Pet Health Club, for all your routine pet health needs.



Chapelfield Veterinary Partnership  
Postmill Close, Wymondham, NR18 0NL  
[www.chapelfieldvets.co.uk](http://www.chapelfieldvets.co.uk)



# Hansells

Solicitors

## Commercial & Private Legal Services

Clinical Negligence ■ Debt Recovery ■ Employment ■ Family  
Notary Public ■ Personal Injury ■ Will, Trusts & Estate Planning  
Power of Attorney & Deputyships ■ Commercial ■ Conveyancing  
Commercial Property ■ Dispute Resolution ■ Charities

Regulated by the Solicitors Regulation Authority No 50602 Authorised and Regulated by the Financial Conduct Authority

Norwich  
Cambridge House  
26 Tombland  
Norwich NR3 1RE  
01603 615 731

Aylsham  
1 Norwich Road  
Aylsham  
NR11 6BN  
01263 734 313

Cromer  
10 Church Street  
Cromer  
NR27 9ER  
01263 512 003

North Walsham  
4 Grammar School Road  
North Walsham  
NR28 9JH  
01692 404 351

Sheringham  
Waterbank House  
Station Approach  
Sheringham NR26 8RA  
01263 822 176

Wymondham  
10 Fairland Street  
Wymondham  
NR18 0AW  
01953 857 578

[info@hansells.co.uk](mailto:info@hansells.co.uk) ■ [www.hansells.co.uk](http://www.hansells.co.uk)

# What's on?

There are a number of annual and one-off events that take place in and around Wymondham every year. To find out what's on in Wymondham, you can look in the following places:

## Town Events Diaries

Events diaries are held and co-ordinated in the town library, the Tourist Information Centre, and in the Wymondham Magazine.

## Local Newspapers

### The Eastern Daily Press

Published Monday - Saturday

### Eastern Evening News

Published Monday - Saturday

### Wymondham & Attleborough Mercury

Published every Thursday.

## Notice Boards

Both the library and the Tourist Information Centre have noticeboards for displaying local event posters, and there is a public noticeboard in the town centre under the old fire station arch off Market Street at the entrance to the car park.

There is also a separate noticeboard for arts and music events in the same place and on the Cambridge line platform at Wymondham Railway Station.





# Wymondham Clubs of the 1950s

**There was a much welcomed addition to the town's community clubs and organisations seventy years ago when the Wymondham Players' drama group was formed in March 1953.**

With leading lights Bob Bagshaw and Denise Muir, the Players' first production Young Wives' Tale was staged in the Vicarage Room in late October and early November that year.



By the end of the run a quarter of the town's population had seen the play. In November 1955 shows moved from the Vicarage Room, which itself would be replaced on its site by the Abbey Hall in 1970, to the Women's Institute Hall on Norwich Road, where the Players trod the boards until the Central Hall was opened in 1965.

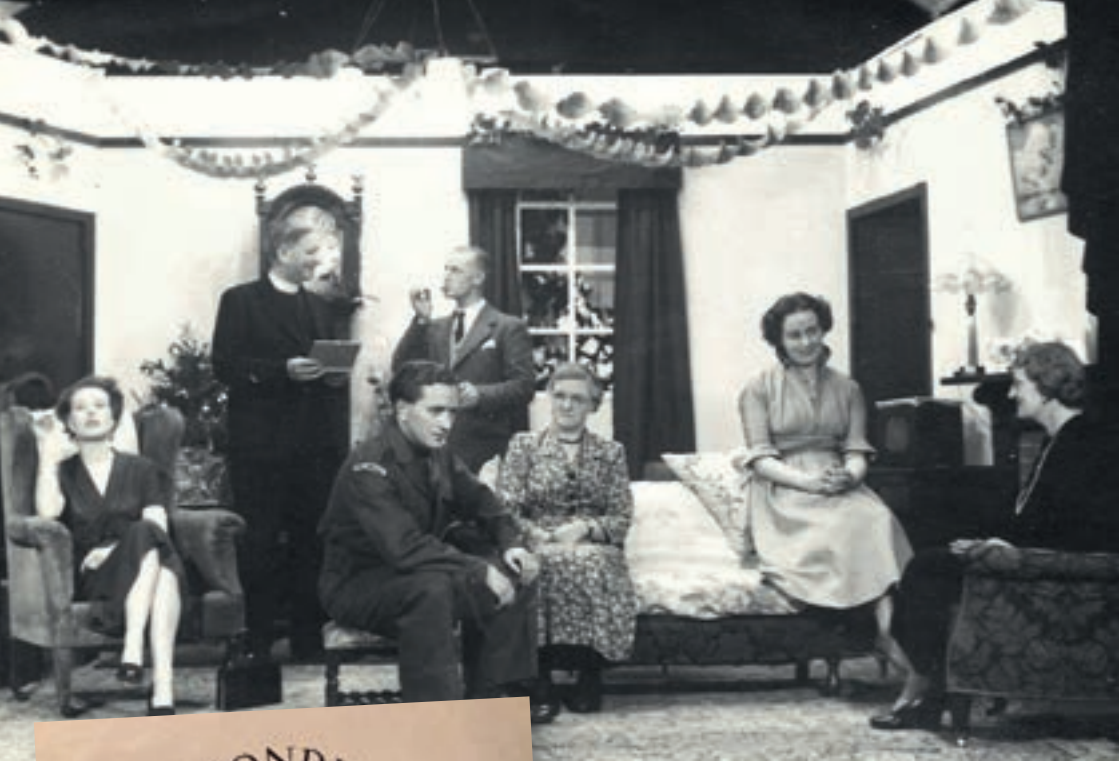
Another positive step occurred in 1953 when in April, at the instigation of George Reeve, a meeting was held at the Men's Club in Market Street when it was decided to form the Wymondham Chamber of Trade and Commerce.

The Chamber became a most vibrant addition to the Wymondham scene, being active supporting the shops, staging trades fairs, including mannequin parades, and leading Christmas celebrations in town with the likes of Brian Seager from Reeves and Eddie Buttolph, who ran an electrician's business, playing Santa Claus and handing out goodies to kiddies. Sadly there is no Chamber today.

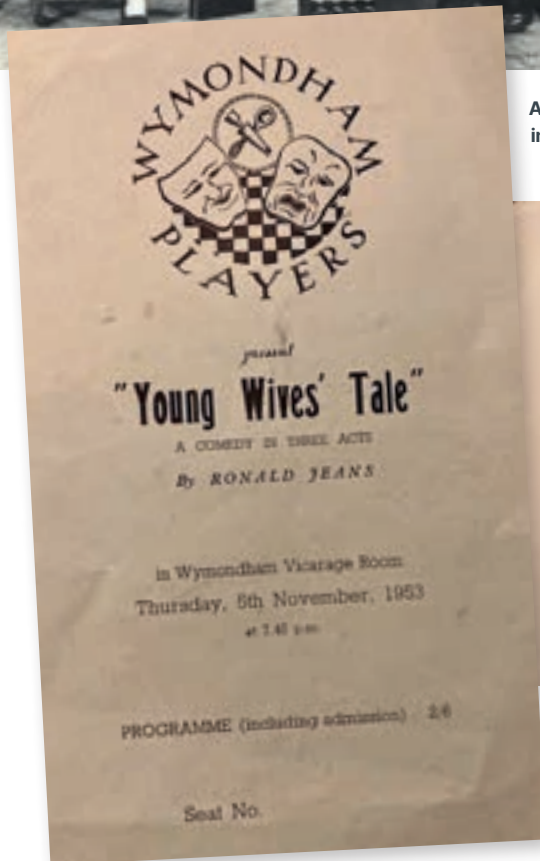
It's worth looking at some of the other town organisations in the 1950s at a time when the country was still recovering from postwar austerity.

The Men's Club, housed in a fine Georgian mansion on the south side of Market Street, provided facilities for meetings, reading and indoor games, particularly billiards, with whist drives being popular in those days.

With declining membership the club folded at the end of the decade in 1959 and three years later the building was sadly demolished to make way for shops.



Above. The Holly and the Ivy, the Players' second production in February 1954. Denise Muir sits in the armchair on the left and Bob Bagshaw sits in front on a stool.



Left and Above.  
Original Programme for the first production  
Young Wives' Tale November 1953

On the corner of Queen's Street with Market Street was the Ex-Servicemen's Club, but it had to move when it too was demolished at the same time in 1963. The club moved to premises in Damgate and later the Regal complex, which it now owns as The Wymondham and District Ex-Services' and Social Club. The British Legion was strong in the 1950s and won many awards, including the national Haig Cup, as well as holding fetes.

Among other organisations in the Fifties were The Wymondham Division of the St. John Ambulance Brigade, with its headquarters in Middleton Street opposite the then Post Office, and the Red Cross, Norfolk 92nd Mixed Detachment, whose Commandant at the time was the legendary Ada Hart, with meetings in a private house in Church Street.

Then there was the Women's Voluntary Service (WVS), the Over 60's Club, a dancing club and a strong branch of Toc H, which played its part in helping the community where needed. The churches of all denominations had "regular weekday organisations and activities".

Among them was the Abbey Youth Club, while the Congregational (now United Reform) Church was proud of its "Youth Circle". A Youth Centre and Evening Institute was based at The Secondary Modern School (now Wymondham High Academy).

There were two Guide Companies with the much loved Anna Smith of Vicar Street having been Captain of the 1st Wymondham Company for more than 30 years.



**Top.**

**The Ex-Servicemen's Club was in Queens Street**

**Middle.**

**A mannequin parade for the 1954 Trades Fair**

**Bottom.**

**British Legion members in July 1954 with trophies, including the Haig Cup, for most money raised for the for the Poppy appeal (Photo: Philip Chapman)**







Above.  
The Abbey Youth Club in 1950s



Above.  
Members of the Red Cross



On Left George Mabbutt with Wymondham Toc H Banner

Below. Wymondham Guides on a Summer Camp at Sheringham, Cpt Anna Smith at the back between two gentlemen



Below. Part of the Men's Club can be seen on near left taken in January 1963 before demolition.





# POSTMILL GARAGE WYMONDHAM

**MOT, SERVICING AND ALL REPAIRS TO  
CARS, COMMERCIALS & MOTORHOMES**

**NOW OPEN! FIND US AT:**

**2 Ayton Rd, Wymondham, NR18 0QH  
Opposite the Factory Shop | 01953 602691**

## POSTMILL VEHICLE HIRE

**VANS OF ALL SIZES  
AVAILABLE FOR HIRE**



# RMI



[WWW.POSTMILLGARAGE.CO.UK](http://WWW.POSTMILLGARAGE.CO.UK)

**CLASS 4 & 7 MOT'S**



**Ken Percival, Captain of the Wymondham Town FC playing the piano at a social at the then Kings Head on the Market Place now the site of the Co-op**

The Wymondham Abbey Scout Group met in the Abbey Schoolroom, as it was called then, in the corner of the churchyard on Church Street. The town boasted a very active Fur and Feather Club, which held six members' rabbit shows every year, as well as an "Open Show" in the Autumn.

On the sporting front the town enjoyed the entertainment provided by its successful football and cricket clubs. Wymondham Town Football Club's free-scoring team of the Fifties competed in the then strong Norfolk and Suffolk League and produced many memorable performances.

A 15-2 rout of Thorpe in January 1957, in which the legendary Ken Percival scored nine goals, and a famous 4-3 win over Great Yarmouth in the FA Amateur Cup in October 1958 spring to mind.

**Middle. George Mabbutt on the right of this Congregational Church outing**

**Bottom. Wymondham Queen's Head, darts team 1957/58 (Photo: Philip Chapman)**







# PlumbRight

## BATHROOMS & KITCHENS

✓ **Local, Reliable & Constantly Recommended**

✓ **Competitive & Fairly Priced**

**Complete Bathroom Installations · Design, Supply & Installation of Bathrooms, Shower Rooms & Cloakrooms**  
**Structural Alterations · All Plumbing, Electrics & Heating**  
**Tiling & Decorating**

**01953 456602**  
**07879 472334**

**[www.prbathrooms.co.uk](http://www.prbathrooms.co.uk)**

**[enquiries@prbathrooms.co.uk](mailto:enquiries@prbathrooms.co.uk)**



PLUMB-RIGHT  
BATHROOMS

Bathrooms · Shower Rooms · Cloakrooms · Wetrooms · Plumbing · Heating · Decorating  
Electrics · Plastering · Carpentry · Flooring · Structural & Room Prefabrication  
Kitchens · Project Management



William Royall, aged 12, with trophies he had won and his pet rabbit at the Fur and Feather Club. (Photo : Philip Chapman).



Above. Abbey A's all-conquering table tennis team.  
Left to right John Clover, Roger Meadows, Peter Meadows.

Below. The free-scoring Wymondham Town FC in the 1950s. Ken Percival is third from left in the front row.



Like the football club the town's cricketers played on the hallowed turf of the King's Head Meadow until moving to Browick Road Recreation Ground in 1958. Between 1955 and 1963 they won the Kimberley Cup seven times – but now the town has no cricket club.

The Rifle Club met at a range at Browick Road Recreation Ground and there were strong bowls, darts and table tennis clubs.

The Wymondham and District Table Tennis League included teams representing the Queen's Head pub, the King's Head pub, which would sadly be closed in the early Sixties and eventually demolished, and the Abbey, which took the top division's title a number of times.

**The social side of life in Wymondham was well catered for in the 1950s.**

**Supplied by Philip Yaxley**



Your Local Wymondham Taxi Company

Local Family Run Business

Established Over 40 years - Lady & Male Drivers

Local & Long Distance - Airports & Seaports

Special Occasions Including: Theatre Trips, Races, Etc.

Air Conditioned Cars

4,6 & 8 Seater Cars, People Carriers & Mini Bus

Competitive Rates - All Areas Covered



[tan\\_cars@btconnect.com](mailto:tan_cars@btconnect.com) - [www.tan-cars.co.uk](http://www.tan-cars.co.uk)

**01953 602693**



**SURFACING LTD**

- |              |                          |
|--------------|--------------------------|
| ■ Driveways  | ■ Vehicular Access       |
| ■ Forecourts | ■ Trench & Patch Service |
| ■ Footpaths  | ■ Hand or Machine Laid   |
| ■ Roadways   |                          |
| ■ Car Parks  |                          |

### DOMESTIC & COMMERCIAL

Work carried out to  
Local Authority Specification  
Covering Norfolk & Suffolk

**Free Survey & Quotations**

**Tel: 01953 459778**

Owl Barn, Norwich Road, Besthorpe,  
Attleborough, Norfolk, NR17 2LA  
[www.mwsurfacing.co.uk](http://www.mwsurfacing.co.uk)



Non-plastic and reduced packaging shopping

Classic Deli Cheeses, Antipasto & Preserves

Natural foods and Dietary Supplements

# RENO REFILLS

Store cupboard staples - bring in your own containers

Refillable wines & Gins  
Local Ales

Organic, Gluten Free &  
Vegan Choices

T: 01953 425995 / 01953 603738

[www.renorefills.co.uk](http://www.renorefills.co.uk)

15 - 17 Market Street, Wymondham, NR18 0AJ





# Travelling to Wymondham



## By Car

Wymondham is situated just off the A11, nine miles south-west of Norwich. There are car parks off Market Street and Back Lane, and at Central Hall and Town Green.

---



## By Taxi

**Station Taxis:** 01953 600007

**Tan Cars:** 01953 602693

---



## By Air

### Norwich International Airport

[www.norwichinternational.com](http://www.norwichinternational.com)

Tel: 01603 411923

Regular **National Express** coaches to and from Stansted, Heathrow and Gatwick  
[www.nationalexpress.com/timetables](http://www.nationalexpress.com/timetables)  
Tel: 08717 818181

---



## By Rail

### National Rail

Wymondham Station is on the Norwich - Ely and Cambridge Line, and the Norwich - Peterborough line.

Tel: 03457 484950 (National Rail)

[www.nationalrail.co.uk](http://www.nationalrail.co.uk)

[www.nationalexpresseastanglia.com](http://www.nationalexpresseastanglia.com)

[www.eastmidlandstrains.co.uk](http://www.eastmidlandstrains.co.uk)



## By Bus

For full details of bus services and pick up points, call Traveline on **0871 2002233**.  
[www.traveline.org.uk](http://www.traveline.org.uk)

Printed timetables are available at Wymondham Tourist Information Centre.

Telephone: 0344 8008020

[www.norfolk.gov.uk](http://www.norfolk.gov.uk)

Regular services connect Wymondham with Norwich, Attleborough, Thetford, Watton and Bury St. Edmunds. Service 59 operates Wymondham and the Norfolk and Norwich Hospital.

The Flexibus service links 28 villages surrounding Wymondham with the town. To book a journey call 0344 8008020 before 4pm on the day before departure. The Flexibus provides a door-to-door service.

Email : [information@norfolk.gov.uk](mailto:information@norfolk.gov.uk)

---








**Mid Norfolk Railway** runs the heritage railway from Wym Abbey Halt to Dereham. Telephone: 01362 851723  
[www.mnr.org.uk](http://www.mnr.org.uk)

# Leeders

Animal  Supplies Ltd

**We stock a comprehensive range of rider essentials, along with feed and accessories for horses, poultry, dogs, cats and all other types of pet.**

**We also offer:-**

-  Loyalty scheme offering discounts across the store**
-  SQPs on site to dispense medications**
-  Prescription diets to order**
-  Hay, straw & bedding**
-  Fertiliser & seed**
-  Worm counts**
-  Rug cleaning / re-proofing and repair service**

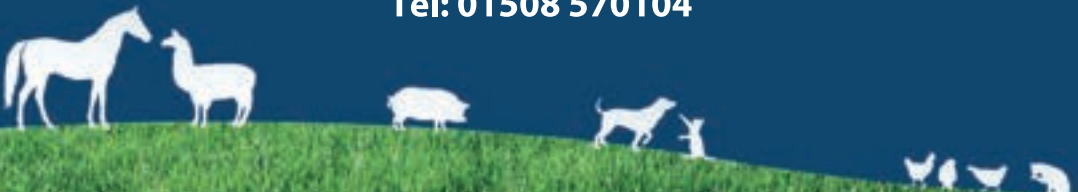
**OPEN MON-SAT 9-5.30pm**

**Unit 8 Philip Ford Way, Wymondham NR18 9AQ**

**Email: [enquiries@leedersanimalsupplies.co.uk](mailto:enquiries@leedersanimalsupplies.co.uk)**

**[www.leedersanimalsupplies.co.uk](http://www.leedersanimalsupplies.co.uk)**

**Tel: 01508 570104**



# Venues For Hire

## Within Town Centre

Abbey Hall	Church Street	Contact: C. Buckton	01953 602108
Bridewell Resource Centre	Room 1 : 50 seats Room 2 : 6 seats	Contact: Rosemary Charles rec@carolus.org.uk	
Catholic Hall	100 seats	Contact: Parish Office	01953 603104
Central Hall	295 seats		01953 608009
Tiffey Room	60 seats		01953 608009
Ex-Servicemen's Club	250 seats	Contact: Club	01953 602261
Fairland Church Centre	120 seats	Contact: Jill Brown	01953 603979
Fairland Hall	100 seats	Contact: Jill Brown	01953 603979
Town Green Centre	Choice of 3 halls	Contact: Marianne Purdy	01953 859775
Wymondham Methodist Church	3 halls	Contact: Marianne Purdy Email : tgc.2016@outlook.com	01953 859775 01953 859775
Wymondham Town FC	60 seats	Contact: Sue	07947 495426
The Hub, Ayton Rd. NR18 0QJ	Choice of rooms	Contact: Hope Community Church	01953 798505

## Outside Town Centre

Ketts Park Centre		Contact: South Norfolk Council	01953 423469
North Wymondham Community Centre	100 Seats		01953 606709
Spooner Row Village Hall	125 seats	Contact: Frances Greenhalgh	01953 799043
Rothbury Community Centre	100 seats	Contact: Val	07731 113331









# Wymondham then and now

## Aerial photo from 1994









# Wymondham then and now

## Aerial photo from 2021











# Ian Myhill Electrical

- New Circuits
- Rewires & Extensions
- Mains Upgrades
- Electrical & Plumbing
- Installations & Maintenance
- Kitchens & Bathrooms
- Residential & Commercial

Tel. **01953 609917**

Mob. **07881 928066**

[ianmyhillelectrical@gmail.com](mailto:ianmyhillelectrical@gmail.com)

## FREE CALL OUT ADRIAN DAWES

Formerly Dennis Eaglen

**33 YEARS EXPERIENCE**

Domestic Appliance Repairs

• Washing Machines

• Cookers

• Tumble Dryers

• Zanussi Specialists

& Most Leading Makes

**07885 706509**

[adriandawes2013@gmail.com](mailto:adriandawes2013@gmail.com)

[www.adriandawes.co.uk](http://www.adriandawes.co.uk)

# BIG FRY



## FISH & CHIPS

# UNEQUALLED FOR

## Quality and Friendly Service

*"probably the best in the area"*

Fish and Chips - Children's Menu

Pukka Pies - Burgers - Chicken Portions

No. 36, Market Street  
Wymondham

Open:

11.30 - 2pm & 4.30 - 10pm

Telephone Orders Welcome

**01953 603210**

- Fresh fish delivered regularly throughout the week
- Award winning sausages from local butcher
- Pies baked daily on premises
- Potatoes processed daily on our premises to ensure freshness







*"Thank you Rosedale, your support and guidance made this difficult time a little more bearable."*

– from a family we have cared for at Rosedale



**Rosedale**  
FUNERAL HOME

Middleton Street, Wymondham

Telephone **01953 601103**

[www.rosedalefuneralhome.co.uk](http://www.rosedalefuneralhome.co.uk)

We are a family business and promise to provide exceptional care and a truly personal 24 hour service, when you need it most.

## Do you suffer with

- Anxiety or Stress
- Fears or Phobias
- Weight Control
- Addictions
- Sleep Issues
- Low Confidence or Self-Esteem

Unlock your potential

Would you like to discover how Hypnotherapy can help?

Call today and book your **FREE** consultation

[www.Wymondhamhypnotherapy.com](http://www.Wymondhamhypnotherapy.com)

**07925 140 931**

[Paul@Wymondhamhypnotherapy.com](mailto:Paul@Wymondhamhypnotherapy.com)



Previous owner Alan Corbould has now retired after 25 years, passing his business into the capable hands of Adrian Downs and Jonathan Smith.

## APPLIANCE CENTRE WYMONDHAM

- **70 years experience** between the new owners •
- Supplying appliances and spares for Norfolk for **25 years** •
- Selling a **wide range** of spares for appliances at competitive prices •
- Offering an **extensive repair service** for most appliances •



AC Appliance Centre Wymondham  
Unit 17, Spur Industrial Estate, Postmill Close, NR18 0NL • 01953 606688  
[acwymondham@gmail.com](mailto:acwymondham@gmail.com) • [www.acappliancecentre.co.uk](http://www.acappliancecentre.co.uk)









**Our charity is run by volunteers and we provide friendship, warm support and a safe and friendly environment for people living with Dementia, their carers and families. Activities are based around our café style meetings at Fairland Hall and Church on Monday and Friday mornings – The Pabulum Café.**

There is always a chance to catch up over a cup of tea or coffee and we offer a timetable of activities including table games, arts and crafts, sporting activities including Boccia, table tennis and indoor bowls. We have an interactive 'Magic Table' offering a shared game between friends.

Our weekly carers meeting provides mutual support to carers who might like to share their ups and downs, expertise and information while their loved ones can enjoy other activities with our experienced trained volunteers. We have special monthly activities including a popular sing-along session, a Dementia friendly cinema afternoon and 'Fish and Chip' lunch days.

Our Happiness Garden offers a chance to get outdoors to join in for some gentle gardening or for quiet reflection. Volunteering offers the chance to make new friends, learn new skills and help make the lives of people living with dementia and their carers a little easier and more enjoyable and we always welcome new volunteers



# Weekly Programme

	Monday	Tuesday	Friday
1 <sup>st</sup>	<b>10.00 to 12.00</b> Refreshments, Chat and table-based activities		<b>10.00 to 12.00</b> Arts & crafts, Indoor Sports, table-based activities  <b>11.00</b> Carers Meeting
2 <sup>nd</sup>	<b>10.00 to 12.00</b> Refreshments, Chat and table-based activities		<b>10.00 to 12.00</b> Arts & crafts, Indoor Sports, table-based activities, Poetry Group  <b>11.00</b> Carers Meeting
3 <sup>rd</sup>	<b>10.00 to 12.00</b> Refreshments, Chat and table-based activities	<b>14.00 to 16.00</b> (13.30 to 15.30 in Winter) Picture Palace Film Show – popular entertaining films	<b>10.00 to 12.00</b> Arts & crafts, Indoor Sports, table-based activities, Sing-along session  <b>11.00</b> Carers Meeting
4 <sup>th</sup>	<b>10.00 to 12.00</b> Refreshments, Chat and table-based activities		<b>10.00 to 12.00</b> Arts & crafts, Indoor Sports, table-based activities  <b>11.00</b> Carers Meeting

We are indebted to the Wymondham community and businesses who have supported us so very well over the years. Wymondham was the first Dementia Friendly Town and long may it be that people living with dementia and their carers are shown kindness and patience when out and about in our community.

There is no referral system to attend a Pabulum Café but we just ask that you pre-book your place by contacting one of our organisers who will also be able to tell you more about our activities – contact details below.

**Church Centre, Fairland Hill, Wymondham, Norfolk, NR18 0AW**

**[www.wymondham-dementia-support-group.org.uk](http://www.wymondham-dementia-support-group.org.uk)**

**[organiser@wdsg.org.uk](mailto:organiser@wdsg.org.uk) (Sarah Green or Deborah Anstee)**

**07391 659057 (Sarah) • 07586 312809 (Deborah)**

**The Wymondham Dementia Support Group is a registered charity No: 114347**



# A local professional care team who come to you

**Personal Care**

**Outings**

**Medication**

**Companionship**



**Dementia Care**

**Activities**

**Dietary Care**

**Household  
Services**

**Call 01953 423349 or 07825 894171  
or email [contact@dellcare.org](mailto:contact@dellcare.org)**

**[www.facebook.com/dellcarenorfolk](https://www.facebook.com/dellcarenorfolk)    [www.dellcare.org](http://www.dellcare.org)**

**CQC rated **Good** in all areas    Covering a 10 mile radius of NR18**

DBS Checked. Fully trained and trained to help those suffering from dementia. Fully Qualified and Insured. Manager and Assistant Manager are both NVQ Level 5 qualified and qualified carers so can also provide care to clients when needed.

**Know of someone looking for a rewarding career?**

**We are on the look out for carers who really care.**

Competitive rates of pay, paid travel time, mileage, holiday + more including other bonuses.

**Call us or visit [www.facebook.com/dellcarerecruitment](https://www.facebook.com/dellcarerecruitment) for more  
information or email [staff@dellcare.org](mailto:staff@dellcare.org)**



# Norfolk Primary Care Trust

## **Norfolk Community Health & Care NHS Trust**

Norwich Community Hospital,  
Bowthorpe Road, Norwich NR2 3TU  
Telephone: 0800 088 4449  
[norfolkcommunityhealthandcare.nhs.uk](http://norfolkcommunityhealthandcare.nhs.uk)  
[pals@nchc.nhs.uk](mailto:pals@nchc.nhs.uk)

## **Ogden Court Community Hospital**

60 Ogden Close  
Wymondham Norfolk NR18 0PE  
Telephone: 01953 605060

## **NHS Choices**

[www.nhs.uk](http://www.nhs.uk)

## **Dentists**

### **My Dentist**

Bridewell Street Wymondham NR18 0AR  
Telephone: 01953 601801

### **Queen Street Dental Surgery**

3 Queens Street Wymondham NR18 0AY  
Telephone: 01953 602753

### **John G Plummer & Associates**

Wymondham Medical Centre  
Postmill Close Wymondham NR18 0RF  
Telephone: 01953 601501

### **Peppermint Dental**

189 Norwich Road Wymondham  
NR18 0SJ Telephone: 01953 603360

## **Chemists**

### **Well Wymondham**

47 Market Street Wymondham NR18 0AJ  
Telephone: 01953 602115

### **Boots Pharmacy**

Wymondham Medical Centre  
Postmill Close Wymondham NR18 0RF  
Telephone: 01953 601772



We treat:  
**Fungal Nail • Callus**  
**Verucca • Nails**  
**Flat feet • Ingrown nails**  
**Any foot or ankle pain**



A fusion of medical and luxury treatments for feet, hands and body



**General Foot Care  
& Podiatry**



**3D Foot Scanning  
& Orthotics**



**Nail & Spa  
Treatments**



**Home Visits**



We help you to:

- **Move and Feel Better**
- **Take less painkillers**
- **Keep away from the doctors**

**Online  
booking  
available**



**Physiotherapy &  
Clinical Massage**



**Acupuncture**



**Pilates & Personal  
Training**



**Home Visits**



**Back in Motion**  
**01953 604331**

[www.back-in-motion.co.uk](http://www.back-in-motion.co.uk)  
[info@back-in-motion.co.uk](mailto:info@back-in-motion.co.uk)



**Feet in Motion**  
**01603 501299**

[www.feet-in-motion.co.uk](http://www.feet-in-motion.co.uk)  
[info@feet-in-motion.co.uk](mailto:info@feet-in-motion.co.uk)

Both located at Windmill Surgery, London Road, Wymondham, NR18 OAF





## Health Care Services

### **Wymondham Medical Centre**

Postmill Close Wymondham NR18 0RF  
Tel: 01953 602220

### **Wymondham Health Care**

(Community Health) 18 Bridewell Street  
Wymondham NR18 0AR  
Tel: 01953 606201

### **Windmill Surgery**

London Road Wymondham NR18 0AF  
Tel: 01953 607607  
[www.windmillsurgery.co.uk](http://www.windmillsurgery.co.uk)

### **Dell Care**

71 Hubbard Cl, Wymondham NR18 0DX  
Tel: 07825 894171

### **Back in Motion, Feet in Motion**

Windmill Surgery, London Road, NR18 0AF

Back in Motion : 01953 604331  
[www.back-in-motion.co.uk](http://www.back-in-motion.co.uk)

Feet in Motion : 01603 501299  
[www.feet-in-motion.co.uk](http://www.feet-in-motion.co.uk)

### **Footsure**

4 Whartons Court, Wymondham NR18 0UQ  
Tel: 01953 425825

# Andy Free

*Dip FD*

*'Quietly helping and guiding bereaved families for many years now in Wymondham and all surrounding areas, our family team offer professional guidance and direction at a time most needed'*

**- Pre-paid Funeral Plans Available -**

*Independent Family Funeral Director*

32 London Road, Wymondham, NR18 9JD  
01953 605222 • 24 hour  
wymondham@andyfree.com

# Mitchell Building Services

New Builds / Extensions / Renovations

Wall & Floor Tiling

Fitted Kitchens & Bathrooms

Driveways & Patios

Chimneys & Fireplaces

Garages; All Carpentry Work

Project Management Service: Design to Completion

17 Silfield Road, Wymondham, NR18 9AU

01953 607139 07887 802396

mbsnorfolk@gmail.com



# Swallowtail

*For high quality print  
you can rely on our  
dedication and expertise*

PRINT

**Contact the sales team:**

Telephone 01603 868862

Email: sales@swallowtailprint.co.uk

[www.swallowtailprint.co.uk](http://www.swallowtailprint.co.uk)

Swallowtail Print Ltd  
Drayton Industrial Park  
Taverham Road  
Drayton  
Norwich NR8 6RL



## Donna M Poole

Professional Ballroom & Latin American Dance Instructor

Looking to join in with a beginners dance class?  
Wednesdays 8.30pm - Partners not required

Technique Classes

Private Tuition

Wedding First Dance

Dances Tea Dances & Events

Practice Sessions

Workshops



[www.ballroomdancingwithdonna.co.uk](http://www.ballroomdancingwithdonna.co.uk)

01953 607474 | 07766 751545 | donna\_poole@sky.com



## National Far East Prisoners of War Memorial Church

**The Books of Remembrance can be seen in the Memorial Cabinet in the Memorial side chapel. They record FEPOW and civilian internees who died in captivity. A new book is available for FEPOW relatives.**

Hon Arc : Peter Wiseman 01953 604144  
 phandtmwiseman@gmail.com  
[www.wymondhamrcchurch.org.uk](http://www.wymondhamrcchurch.org.uk)

FEPOW Contact Peter Wiseman  
[fepow@wymondhamrcchurch.org.uk](mailto:fepow@wymondhamrcchurch.org.uk)  
 Parish Priest: 01953 603104  
[www.fepow@wymondhamrcchurch.org.uk](http://www.fepow@wymondhamrcchurch.org.uk)

The Roman Catholic Church of Our Lady and St Thomas of Canterbury  
 1 Norwich Road, Wymondham, Norfolk, NR18 0QE





Need help renting out  
your property?

Struggling with all the  
legislation for landlords?

Let us take the stress out of letting your property

Call us on 01953 799188

Local Independent Professional Service - Tailored to You  
Competitive Prices - No VAT - Tenant Finds through to Fully Managed

[kathy@orchardklettings.com](mailto:kathy@orchardklettings.com) [www.orchardklettings.com](http://www.orchardklettings.com)

Level 3 Qualified in Residential Property Lettings and Management



[www.stauffanglia.co.uk](http://www.stauffanglia.co.uk)

*Pipeline Products For All Industries*

**Hydraulic | Pneumatic | Industrial | Chemical | Process | Hygiene**

**Hydraulic**

Hoses, Tubes  
Adaptors, Couplings  
Pipe Clamps, Filters  
Condition Monitoring,  
Accessories, Flow  
Control Valves, Ball  
Valves

**Industrial**

Malleable Iron  
Fittings, 1387 Tube,  
Tube Supports and  
U Bolts, Table Flanges,  
Brass Ball Valves,  
Suction & Delivery  
Hoses

**Offshore & Marine**

Superlok Twin  
Ferrule couplings  
Stauff Anti Corrosion  
Clamps, Stainless  
Steel Tube and  
Connectors, Ultra High  
Pressure Hoses

**Local trade Counter | National Deliveries | Export Supplies**

**Stauff Anglia Limited**

Unit 405 Copper Smith Way | Wymondham | Norfolk | NR18 0WY  
T +44(0) 01953 857158 | F +44(0) 01953 857159 | [sales@stauffanglia.co.uk](mailto:sales@stauffanglia.co.uk)



Hope Church

# WELCOME

[welcome@hopecommunitychurch.co.uk](mailto:welcome@hopecommunitychurch.co.uk)

We believe that every person is a glorious image of our creator and that everyone, young, old and in between has a significant purpose. We strive for a culture of people who know their identity as sons and daughters of the living God, people that carry God's Presence with them and impact the world around them. We promise to help you deepen your grasp of these truths and help you enjoy them in your life.

- ✓ Modern worship and full programme of activities for children and youth from birth to 18 years old.
- ✓ Live streaming of one morning service a week.
- ✓ Mid-week Life Groups, Toddler, Children's and Youth Groups.
- ✓ All details of Sunday meetings times, and our full programme can be found at: [www.hopecommunitychurch.co.uk](http://www.hopecommunitychurch.co.uk)

 **Hope Church Wymondham and Thetford**

 **Hope Church Wymondham**

**Hope Church, Ayton Road,  
Wymondham, NR18 0QJ**

Leader: Mark Bullen  
Church Office: 01953 798505  
[office@hopecommunitychurch.co.uk](mailto:office@hopecommunitychurch.co.uk)

---

## Hub Community Project

Supporting family needs by the provision of a number of activities in the community. Our heart is to assist families to reach their potential, to live complete and joy filled lives and to play a full role in the community. Our projects are staffed by a team of dedicated volunteers who have a heart see positive change in the community.

**For further information contact:**  
[debbie@hopecommunitychurch.co.uk](mailto:debbie@hopecommunitychurch.co.uk)

# Wymondham Methodist Church & Town Green Centre

Wymondham Methodist Church has been a place of worship and witness for over 150 years. Attached to the Church is the Town Green Centre (opened in 1989) which has rooms for community use and hire, and is part of our social gospel



**For details about hiring any of our rooms please telephone 01953 859775 or email: [tgc.2016@outlook.com](mailto:tgc.2016@outlook.com)**

**To contact our Minister – Rev Steve Cullis**

**Telephone: 01953 609106  
[stephen.cullis@methodist.org.uk](mailto:stephen.cullis@methodist.org.uk)**

**[www.wymondhammethodistchurch.com](http://www.wymondhammethodistchurch.com)**

**Facebook: [HMWMMethodistChurches](https://www.facebook.com/HMWMMethodistChurches)**

We are known to be a welcoming, caring and accepting church. Please come along to any of our services or activities to find out if we are the place for you.

Sunday morning services are weekly at 10.30am. On the fourth Sunday of the month this takes the form of a Coffee Church Service and is more informal; this service is held in the Frank Bunn room at the back of the church.

On the first Sunday of the month at 6.30pm there is a Reflective Service also held in the Frank Bunn Room.

Each Tuesday morning (currently from 10.00-12.00) we have Open Door in the Town Green Centre – a time for coffee and chat, or a period of quiet and rest or an opportunity to do puzzles, drawing or colouring and craft activities.

The Church is open at the same time for reflection and prayer.

The Men's Group (women are also welcome) meets at 10am on the 2nd and 4th Tuesday of each month excluding August and December.

Programme includes speakers, discussions and social occasions, including a meal out.

A Meditation Group meets on the first Monday of the month at 2.45pm

There is a Prayer Meeting on Tuesday mornings at 9.30am in the Green Room

In the new year we are planning to have a gathering for tea and chat plus a short devotional time once a month on Tuesday afternoons at 2pm. Dates still to be confirmed.



# Wymondham Local Quaker Meeting

All are welcomed for worship at 10.30 - 11.30am on Sundays at The Frank Bunn Rooms, Town Green Centre, Town Green (at the back of the Methodist Church). Quakers share a way of life rather than a set of beliefs. We seek to experience God directly, within ourselves and in our relationships with others and the world around us.

These direct encounters with the Divine are where Quakers find meaning and purpose.

**Contact: Mrs Ann Parr**

**Telephone: 01953 600168**

**Website: [www.quaker.org.uk](http://www.quaker.org.uk)**

**Address (for correspondence):**

**11 Downham Crescent, NR18 0SF**



## The Alive Church Wymondham

God has an amazing plan for Wymondham! He has given us the opportunity to be involved in that plan by showing His love and grace to the people we meet. We believe that one day Wymondham will be known as a place where God is doing amazing things, where people are accepted, transformed, healed and set free. Our priority is to build people into strong Godly men, women and children, full of His Holy Spirit. This will provide the foundation for what God wants to do.

We also believe God has a plan for your life and we would love to help you discover the things He has for you. Jesus not only came so that our sins could be forgiven He came that we may have life and life in all its fullness. (John 10:10, The Bible)

We meet at Wymondham Central Hall, 10am every Sunday and we would love to meet you. You are welcome to visit anytime.

Please visit the Wymondham page of our website [www.alivechurch.org.uk](http://www.alivechurch.org.uk) and view our brochure which will provide you with more details of the things we are involved in and what happens during the week.

**Please contact:**

**[wymondham@alivechurch.org](mailto:wymondham@alivechurch.org)**

**[barbara@alivechurch.org.uk](mailto:barbara@alivechurch.org.uk)**

# Church of Our Lady & St. Thomas of Canterbury

Catholic parish serving the communities of Wymondham, Attleborough, Hethersett, Hingham and Mulbarton. National Far East Prisoners of War Memorial Chapel.

## Weekend Mass times

Saturday: 6pm Vigil Mass

Sunday: 8:30am

10am

Mon-Fri: 10am

Holy Days of Obligation 10am, 7pm

1, Norwich Road, NR18 0QE  
Tel: 01953 603104  
[www.wymondhamrcchurch.org.uk](http://www.wymondhamrcchurch.org.uk)

Parish Priest : Canon Patrick Cleary  
[fr.patcleary@wymondhamrcchurch.org.uk](mailto:fr.patcleary@wymondhamrcchurch.org.uk)

Assistant Priest : Fr. Denis Gallagher  
[fr.denisgallagher@wymondhamrcchurch.org.uk](mailto:fr.denisgallagher@wymondhamrcchurch.org.uk)





# Fairland United Reformed Church

A welcome community of God's people, meeting for worship at 10.30am every Sunday. Our hall is a useful community building available to groups for hire.

[secretary@fairlandurc.org.uk](mailto:secretary@fairlandurc.org.uk)

[www.fairlandurc.org.uk](http://www.fairlandurc.org.uk)

Fairland Green, Fairland Hill, NR18 0AW





# Wymondham Baptist Church

**For over 200 years Wymondham Baptist Church has been opening our doors to all the Wymondham community on Sundays and other days during the week.**

We welcome everyone to our Sunday services at 10.30a.m. each Sunday morning. Come and experience the presence of God in our times of worship and be inspired as we teach from the Bible with messages that are relevant to our lives today.

We are a family made up of people of all ages, from all walks of life and from different backgrounds. Our services reflect this as we seek to be an authentic Fellowship with a place for everyone and we expect God to meet with us and speak to us.

You will receive a warm welcome and our dedicated welcome team will be able to answer your questions and direct you to where you need to go. There is an informal time where refreshments are served after the worship service.

Each Sunday we have activities for the children – there is a creche for babies and pre-school children, a group called Ignite for children from Reception to Year 5 and another group called T4:12 for children and young people from Year 6 to Year 11.

Every other month we run an informal Café style Church which gives us an opportunity to share the good news of Jesus in quite a different and relaxed way for all ages.

On alternate Fridays we run a youth group for the young people of the town.

Alpha courses are run for both young people and adults. We also offer home groups where members and friends can share together, study God's word and learn together in a small group.

We are a very active church and open our premises to the community on Mondays and Fridays and invite everyone to join us at our Roots Community Café.

The café is open from 10a.m. to 1p.m. and serves hot food, cakes, hot drinks and offers gluten free, vegetarian and vegan options. The café also offers child-friendly options. Above all, the café is a place of acceptance, safety and friendship. We also run a café on Tuesdays during term time from 2.30p.m. called Thrive@Roots for secondary school young people.

We are also a registered Warm Welcome Space, called Home from Home which runs on Wednesday and Thursday from 1.30p.m. – 4.30p.m. offering free hot drinks and snacks, activities to engage in, people to chat to and share time with in the warm.

Whilst the building is historic we have sought to bring new life to the space that we have available to us. We invite you to join us and share in the adventure that we call church, having a vision to be 'An authentic church with a place for everyone.'

**Minister – Mr. Paul Smith Queen Street,  
Wymondham NR18 0AY Website -  
[www.wymondhambaptist.org](http://www.wymondhambaptist.org)  
[office@wymondhambaptist.org](mailto:office@wymondhambaptist.org)**

**Church Office: 01956 606520**



# Hummingbird Preschool

At Hummingbird we want to encourage children to be curious and confident about the world they live in. We carefully plan activities to enable children to explore and discover.

We promote outdoor learning, messy and creative play and sharing language as a way to develop communication, self confidence and independence.

[www.hummingbirdpreschool.co.uk](http://www.hummingbirdpreschool.co.uk)  
[office@hummingbirdpreschool.co.uk](mailto:office@hummingbirdpreschool.co.uk)  
Great Expectations Business Park,  
London Road, Wym., NR18 9SJ  
Tel: 01953 603333





*Let's do the very best we can!*  
*Congratulations, your majesty, on your Platinum Jubilee!*



- ✓ Government Funded Hours available on all sessions!
- ✓ No additional fees for baby wipes, nappies or snacks!
- ✓ Owned and Managed by Qualified Teachers

For children  
8 months -  
4 years old

Great Expectations Business Park, Unit 1, London Road, Sutton, Wymondham NR18 9SJ  
Tel, 01953 603333 - [www.hummingbirdpreschool.co.uk](http://www.hummingbirdpreschool.co.uk) - [office@hummingbirdpreschool.co.uk](mailto:office@hummingbirdpreschool.co.uk)



# Education

This section includes information about the local Pre-Schools and Playgroups, Primary Schools and Secondary Schools in the Wymondham area, along with other educational organisations in the vicinity.

## Pre-School Playgroups

### **Bouncing Beans Children's Nursery**

197 Norwich Road, NR18 OSJ

Tel: 01953 857311

[www.bouncingbeanschildrensnursery.co.uk](http://www.bouncingbeanschildrensnursery.co.uk)

### **Busy Bees Nursery**

Browick Road Primary School

Contact: Tara Smith

Tel: 01953 601538

[www.busybeeswymondham.co.uk](http://www.busybeeswymondham.co.uk)

### **Hoppers Parent & Toddler Group**

Hub, Ayton Road, NR18 0QJ

Tel: 01953 798505

[office@hopecommunitychurch.co.uk](mailto:office@hopecommunitychurch.co.uk)

### **Hummingbird Pre-School**

Great Expectations Business Park,  
Unit 1, London Rd, Wymondham NR18 9SJ

Tel: 01953 603333

[www.hummingbirdpreschool.co.uk](http://www.hummingbirdpreschool.co.uk)

### **Kaleidoscope**

Browick Road Primary School, Wymondham

Tel: 07884 187967

[kaleidoscope-osc@hotmail.com](mailto:kaleidoscope-osc@hotmail.com)

All the schools welcome contact with prospective parents and carers.

For further details and a copy of the current school prospectus, please contact the head teacher at the number given. Copies of the most recent OFSTED reports for each school are held in Wymondham Library.



### **Kaleidoscope**

Browick Road Primary School,  
Wymondham

Tel: 07884 187967

[kaleidoscope-osc@hotmail.com](mailto:kaleidoscope-osc@hotmail.com)

### **Mulberry Bush Day Nursery**

Norwich Common, Wymondham

Tel: 01953 603792

[www.mulberrybush.org](http://www.mulberrybush.org)

[st.edmunds@mulberrybush.org](mailto:st.edmunds@mulberrybush.org)

### **Stepping Stones Pre-School**

Catholic Hall, Wymondham

Contact: Mrs Sam Standley

Tel: 07787 550462

# K&J's GRILL

**Burgers • Hot Dogs • Baguettes  
• Sandwiches • Rolls • Salads**

**07747 835700**

**kayjaysgrill@gmail.com**

**WHY SHOULD I WORRY?  
I'M IN AN OAKTREE UNIT!**



**Quality premises for any business,  
large or small  
Easy In, Easy Out terms  
Full support and backup  
The FLEXIBLE way to lease premises**

Oaktree Partnership  
5a Allenbrooks Way  
Wymondham Norfolk  
NR18 0NW

**01953 600051**

[info@oaktreepremises.co.uk](mailto:info@oaktreepremises.co.uk) [www.oaktreepremises.co.uk](http://www.oaktreepremises.co.uk)



## **Stuart Wright Transport Ltd**

**MOT Testing Class 1, 2, 3 and 4**

**info@swtransport.co.uk  
www.swtransport.co.uk**

**Office: 01953 604710**

**35 Penfold Drive, Wymondham, Norfolk, NR18 0WZ**

## **SWPower**

**A wide range of products including lawn  
mowers, pressure washers, strimmers,  
air compressors, power tools and  
garden machinery.**

**HYUNDAI**  
POWER PRODUCTS

**Tel: 01953 604710  
www.swpower.co.uk**

## **WYMONDHAM ANTIQUES CENTRE**

**Furniture and Collectables**

**ITEMS BOUGHT  
AND SOLD**

**01953 604817**

**3 Town Green | Wymondham  
Norfolk | NR18 0PN**



## Mulberry Bush Day Nursery

At Mulberry Bush children learn and develop through fun, play based experiences in an environment designed around them.

Mulberry Bush Day Nursery opened in Mulbarton in 2003. Our second nursery, Mulberry Bush Day Nursery at St.Edmunds, launched in Wymondham six years later.

The nurseries are owned and managed by Ros and Jo, two local mums and businesswomen who have a passion for providing the best nurturing care and inspirational learning for children with over 25 years of experience in childcare and education.



**Mulberry Bush  
Day Nursery**  
(not St Edmunds)

### ***Mulberry Bush Day Nursery at St.Edmunds***

Norwich Common  
WYMONDHAM  
Norfolk  
NR18 0SP

**CONTACT:**  
01953 603792 or  
wymondham@mulberrybush.org

**A converted chapel and purpose-built bungalow  
With garden and orchard**

Caring, qualified staff  
Excellent facilities for learning through play  
A 'home-from-home' environment

### **QUALITY DAYCARE AND NURSERY EDUCATION**

for children aged 3 months to 5 years  
Open 8am to 6pm all year round

Just off the A11 in the market town of Wymondham

We also have a sister nursery based in Mulbarton  
with easy access to central Norwich

### ***Mulberry Bush Day Nursery Mulbarton***

Wingfield Court  
MULBARTON  
Norfolk  
NR18 0SP

**CONTACT:**  
01508 570100 or  
mulbarton@mulberrybush.org





# Ashleigh Primary School & Nursery

Ashleigh Primary School and Nursery provides quality education within a happy, caring and exciting environment and was graded as Outstanding in all areas in its most recent Ofsted report (June 2018).

Learning at Ashleigh is fun and purposeful, and makes the most of children's natural curiosity.

The open culture and warm atmosphere support good spiritual, moral and social development.

The school provides outstanding care, guidance and support at every opportunity. The inclusive and positive ethos encourages above average attendance.

Attainment has been significantly above the national average for the last four years.

The school works exceptionally well with parents and carers. Parents and carers indicate unanimously that their children enjoy school and are prepared well for the future.



**Head: Mr John McConnell**  
**Telephone: 01953 602410**  
**[office@ashleighprimary.norfolk.sch.uk](mailto:office@ashleighprimary.norfolk.sch.uk)**  
**[www.ashleighprimary.com](http://www.ashleighprimary.com)**

**Ashleigh Primary School & Nursery**  
**Sheffield Road, Wymondham, NR18 0HL**

**Pupils: 42 in nursery, 445 in main school**



# Browick Road Primary & Nursery School

**Our school, rated outstanding by Ofsted, is located in the heart of Wymondham. We are proud of the school's long history, opening in 1876 as the town school.**

We place great emphasis on children being happy and safe in school as happy children are motivated to learn.

We have a well resourced, spacious learning environment which includes a large field, playground, adventure play area, allotment and wildlife area.

We also have a specialist resource base for children with communication difficulties.

Teachers are supported by teaching assistants in all classes and year groups work in teams to provide a creative curriculum for the children. We have a wide range of extra-curricular activities too.

Kaleidoscope childcare service is also on site. It runs a breakfast club, an after school club and holiday childcare. Visits are welcomed; please telephone to make an appointment.

**Head: Pauline McMullan**  
**Telephone: 01953 603061**  
[office@browickroad.norfolk.sch.uk](mailto:office@browickroad.norfolk.sch.uk)  
[www.browickroad.norfolk.sch.uk](http://www.browickroad.norfolk.sch.uk)  
**Browick Road, Wymondham, NR18 0QW**  
**Pupils: 262**

**Caley's**  
APOTHECARY

Organic herbs, teas, oils,  
supplements, cloth nappies,  
incense, crystals, refills, books,  
plus many other natural health &  
eco living products stocked!

10% off your first shop in store with  
this ad, or your first online order,  
with promo code: WELCOME10

MEMBER OF THE  
AROMATIC HERB SOCIETY  
WILKINS  
HERB  
SOCIETY

Consultations also available with herbalist,  
Stephanie Caley, MNIMH  
[www.themedicalherbalistlondon.co.uk](http://www.themedicalherbalistlondon.co.uk)

4 Acorn Court, Wymondham,  
Norfolk, NR18 9AL  
Tel: 01953 6022  
Mob: 07508 7993  
[www.CaleysApothecary.co.uk](http://www.CaleysApothecary.co.uk)

Follow us:  
f  



## Spooner Row Primary School

Spooner Row is a small, friendly, traditional village school, situated about three miles from Wymondham centre, on the edge of Spooner Row village. It has strong links with the Spooner Row Acorns pre-school group, which shares its site.

Although it has an attractive Victorian foundation, the school's buildings and facilities have been extensively adapted over the years to meet the needs of modern life in a primary school.

Teaching is organised in four teaching groups, which vary in size and composition according to pupil numbers. The outside play space includes a playground and a conservation and wildlife garden.

**Executive Head - Sasha Furze**  
**Head of School - Bryony Best**  
**Telephone: 01953 603356**  
**[office@spoonerrow.norfolk.sch.uk](mailto:office@spoonerrow.norfolk.sch.uk)**  
**[www.spoonerrowprimary.co.uk](http://www.spoonerrowprimary.co.uk)**  
**Station Road, Spooner Row,**  
**Wymondham, NR18 9JR**  
**Pupils: 105**

**Carpet & Upholstery Cleaning that's  
Safe, Affordable & Cost Effective too!**

**Cleaning Doctor**  
As good as new

BUY WITH  
CONFIDENCE

"Absolutely brilliant... Kevin cleaned our very messy sofa  
& chair. Amazing to see them looking beautiful again."  
Sally M - Wymondham

**Call Kevin Jarvis Today on...**  
**07773 280 772 or 01953 542 072**

- Professional Carpet, Rug and Mat Cleaning
- Curtain Cleaning & Upholstery Cleaning
- Spot, Stain, Odour Removal & much more
- Leather Cleaning and Mattress Cleaning
- Stain protector for carpets & upholstery

**[www.cleaningdoctor.net/wymondham](http://www.cleaningdoctor.net/wymondham)**





# Robert Kett

Primary School ●●●●

## *A happy place to be!*

- |                                 |  |
|---------------------------------|--|
| ➡ Caring, nurturing environment | ➡ Confident & independent learners developing a sense of community |
| ➡ Happy children                | ➡ Enabling children to succeed with high aspirations               |
| ➡ Everyone welcome              | ➡ Celebrating uniqueness   |
| ➡ Working & achieving together  |  |

*At Robert Kett, don't worry, be happy!*

T | **01953 603405** E | **office@robertkett.net**  
W | **www.robertkett.net**

*Achieving Together*



# Wymondham High Academy

**Welcome to  
Wymondham High  
Academy, a thriving  
school with an  
Outstanding 6th Form.**

There are currently 1800 children on role, including 350 in the Sixth Form. We are extremely proud of the high standards reached by all members of our community. Our focus lies in creating high aspirations and creating opportunities for pupils to achieve their very best.

We aim to inspire excellence in all we do, with a broad and balanced curriculum, exceptional extra-curricular activities and a very strong reputation for high expectations our pupils flourish in this environment.

**Wymondham High Academy**  
**Folly Road, Wymondham, NR18 0QT**  
**Principal: Mr Jonathan Rockey**  
**Telephone: 01953 602078**  
**Email: [office@wh-at.net](mailto:office@wh-at.net)**  
**6th Form: [gilla@wh-at.net](mailto:gilla@wh-at.net)**  
**Facebook: [wymondhamhighacademy](https://www.facebook.com/wymondhamhighacademy)**  
**Twitter: [@WyHighAcademy](https://twitter.com/WyHighAcademy)**  
**[www.wymondhamhigh.co.uk](http://www.wymondhamhigh.co.uk)**  
**Pupils: 1800**

# Norfolk Adult Education Service

The long standing provider of adult learning in the Wymondham and Attleborough area, Norfolk Adult Education offers a wide range of courses. Most take place in the evening, though some courses also take place during the day at various centres in Wymondham and Attleborough, and in venues in the surrounding villages.

[www.norfolk.gov.uk/adulteducation](http://www.norfolk.gov.uk/adulteducation)



# WEA: Workers' Educational Asso.

WEA (Workers' Educational Association) is the UK's largest voluntary sector provider of adult education. Wymondham Branch runs two courses a year plus occasional Day Schools. The courses are of general interest and are delivered by expert tutors in a friendly environment. No previous knowledge or qualifications are needed, only a willingness to share with others your curiosity, ideas and experiences.

**WEA Wymondham Branch**

**Secretary: Ros Krieger**

**Tel: 01953 600639**

**[rkrieger@talktalk.net](mailto:rkrieger@talktalk.net)**

# Wymondham Town Team

A community group working to enhance the community in which we live. If you are interested in supporting community activity from lighting up the town for Christmas to supporting large scale events, please contact us via our website:

[www.wymondhamtownteam.org](http://www.wymondhamtownteam.org)

# U3A

**[secretary@wymondhamu3a.org.uk](mailto:secretary@wymondhamu3a.org.uk)**

**[www.u3asites.org.uk](http://www.u3asites.org.uk)**





**Star Throwers provides an individually focused support service for cancer patients and their carers.**

Star Throwers is a cancer support charity based in Wymondham, Norfolk dedicated to supporting people affected by cancer, from diagnosis through to life after cancer.

We provide cancer information sessions to help people to become well-informed about their cancer and all of their treatment options – including clinical trials and alternative treatments.

People with cancer are often asked to make treatment decisions and require information about their cancer diagnosis and its impacts.



At Star Throwers we aim to help you understand the information that you have been given by your medical team e.g. translating medical reports or explaining why specific investigations are required in order for you and your medical team to plan appropriate treatments for you.

We also help people to manage the effects of their cancer and cancer treatments through our wellbeing support which includes counselling, lymphoedema support, nutrition support, complementary therapies and group workshops.

All of the support Star Throwers offers is available to cancer patients and carers (age 18+) with any form of cancer at any stage of diagnosis and is completely free of charge, thanks to our amazing donors and supporters.

**[www.starthrowers.org.uk](http://www.starthrowers.org.uk)  
[info@starthrowers.org.uk](mailto:info@starthrowers.org.uk)  
Tel: 01953 423304**



# Local Charities

## **Big C Craft & Furniture Emporium**

4 Allenbrooks Way, NR18 0NW

Tel: 01953 603320

## **Break Charity**

18 Market Street, NR18 0BB

Tel: 01953 603047

[office@break-charity.org](mailto:office@break-charity.org)

[www.break-charity.org](http://www.break-charity.org)

## **British Red Cross**

The Bridewell, Norwich Road, NR18 0NS

Tel: 01953 607823

## **East Anglian Children's Hospice**

12-13 Market Place, NR18 QAX

## **Ex-Servicemen Club**

Friarscroft Lane, NR18 0AT

Tel: 01953 602261

[p.manager@btinternet.com](mailto:p.manager@btinternet.com)

## **Food Stores**

Hub Community Project,

Ayton Road, NR18 0QJ

Tel: 01953 798505

[info@hubproject.org.uk](mailto:info@hubproject.org.uk)

[www.hubproject.org.uk](http://www.hubproject.org.uk)

## **Keeping Abreast**

Breast Cancer Reconstruction

& Support Group

[jane.crockett@keepingabreast.org.uk](mailto:jane.crockett@keepingabreast.org.uk)

## **RSCPA Charity Shop**

1 Church Street, NR18 0PH

Tel: 0303 040 1565

## **Star Throwers Cancer Care Centre**

Tel: 01953 423304

[info@starthrowers.org.uk](mailto:info@starthrowers.org.uk)

[www.starthrowers.org.uk](http://www.starthrowers.org.uk)

## **Star Throwers Cancer Charity Shop**

10 Middleton Street, Wymondham,  
NR18 0AD

Tel: 01953 798426

[info@starthrowers.org.uk](mailto:info@starthrowers.org.uk)

[www.starthrowers.org.uk](http://www.starthrowers.org.uk)

## **Wymondham Dementia Support**

Fairland Utd Reformed Church

Every Friday

Tel: 07712 727897

[www.wymondham-dementia-support-group.org.uk](http://www.wymondham-dementia-support-group.org.uk)

# Support

## **Dell Care**

Tel : 01953 423349

## **Greening Wymondham Group**

See Facebook Page

## **Keeping Abreast**

Breast Cancer Reconstruction  
& Support Group

[www.keepingabreast.org.uk](http://www.keepingabreast.org.uk)

Contact : Jane Crockett, 01603 819113

[info@keepingabreast.org.uk](mailto:info@keepingabreast.org.uk)

## **Meeting Point**

Support group for those feeling lonely.  
Roman Catholic Church, Norwich Road  
Contact : 01953 603104

## **Wymondham Allotments Association**

See Wymondham Town Council Websites

## **Wymondham & Attleborough**

### **Talking Newspaper**

[georgette@valemail.uk](mailto:georgette@valemail.uk)

Tel: 01953 605434 / 078867 681839

## **Wymondham Dementia Support Group**

[www.wymondham-dementia-support-group.org.uk](http://www.wymondham-dementia-support-group.org.uk)

## **Wymondham Farm Machinery Club**

Richard Mack, 01953 603773

## **Wymondham Garden Club**

Contact : Andrew Howell, 01953 604373  
Meetings are held on the third Monday of each  
month at Town Green Centre, Town Green,  
Wymondham, commencing at 7.30 pm.

## **Wymondham Heritage Society**

Janet Benjafield Tel: 01953 606257

## **Wymondham Nature Group (WyNG)**

Ann Carpenter, 01508 488337

[wymondham@norfolkwildlifetrust.org.uk](mailto:wymondham@norfolkwildlifetrust.org.uk)

# Sport & Recreation

## **Eastern Shotokan Karate Association**

Tel: 01603 418751 : [office@eska.co.uk](mailto:office@eska.co.uk)

## **Ketts Park Community & Recreation Centre**

Tel: 01953 423499

Clubs using the facility:

### **• Wymondham Tennis Club**

[www.wymondhamtennisclub.co.uk](http://www.wymondhamtennisclub.co.uk)

### **• Wymondham Judo Club**

[www.wymondhamjudoclub.co.uk](http://www.wymondhamjudoclub.co.uk)

### **• Wymondham Town United Youth F.C.**

[www.pitchero.com/clubs/wymondhamtownunitedyouthfc](http://www.pitchero.com/clubs/wymondhamtownunitedyouthfc)

## **Pitch & Putt, Silfield**

Tel: 01953 603199

## **Priory Garden Bowls Club**

Sec. Bob Smith, Tel: 01953 600894

## **Wymondham Dell Bowls Club**

Members Only, Tel: 01953 602099

## **Wymondham Football Club**

Kings Head Meadow, Tel: 01953 607326

## **Wymondham Leisure Centre**

Tel: 01953 607171

To view a full list of activities visit:

[www.south-norfolk.gov.uk/visitors/leisure-centres/wymondham-leisure-centre](http://www.south-norfolk.gov.uk/visitors/leisure-centres/wymondham-leisure-centre)

## **Wymondham Rugby Club**

Bray Drive, NR18 OGQ

Tel 01953 687923



## Social

### **Ex – Servicemen’s Club**

Tel: 01953 602261

### **Freemasons**

doriclodge1193@gmail.com

### **Lions Club**

Tel: 0345 833 5749

### **RAF Association, Wymondham Branch**

Jay Bee

Tel: 07456 214083, 01953 602658

### **The Regal Experience**

Maureen Dodman, 01953 605593

### **Rotary Club of Wymondham**

Secretary: Richard Elliott

Email: richard@topbarnnorfolk.co.uk

## Youth Activities

### **Fire Cadets**

Tel: 01603 810351

[www.norfolkfireservice.gov.uk](http://www.norfolkfireservice.gov.uk)

### **The Space**

Contact : 01953 798505

[info@hubproject.org.uk](mailto:info@hubproject.org.uk)

[www.hubproject.org.uk](http://www.hubproject.org.uk)

### **Wymondham Detachment Army Cadet Force**

Tel: 01362 694514

### **Royal Air Force Air Cadets Wymondham Squadron**

Tel: 01953 601210

## Guides & Scouts

### **Scouting & Girl Guiding**

For general enquiries (Guides), contact  
District Commissioner Jayne Little  
[wymondhamdc@gmail.com](mailto:wymondhamdc@gmail.com)

For general enquiries (Scouts), contact  
Bradley Field

### **1st Wymondham Scouts and Guides Headquarters**

HQ Kimberly Street, NR18 0NG

Tel: 01953 604289 / 07734 114901

[www.wymondham-scouts-and-guides.uk](http://www.wymondham-scouts-and-guides.uk)

# N J Myhill Architecture

Professional Design & Plans Drawing Service

[www.njmyhill-architecture.co.uk](http://www.njmyhill-architecture.co.uk)

- *Home Extensions, Remodeling, New Developments, Garden Structures and Redesigns all undertaken*
- *Free Initial Consultation*
- *Planning and Building Control Submissions*
- *Competitive Fees*



Call now:

**01953 603413**

[nigel.myhill@live.co.uk](mailto:nigel.myhill@live.co.uk)



Kitchens supplied & fitted.

Made to measure alcove units,  
wardrobes, cupboards.

Stairs, windows, doors supplied & fitted.

Bathroom refurbishment.

[www.stuartgoodacarpentry.co.uk](http://www.stuartgoodacarpentry.co.uk)

[sjgooda7@gmail.com](mailto:sjgooda7@gmail.com)

07768 503744 • 01953 600790

## CHRISTOPHER ALDRIDGE

1<sup>ST</sup> FRANK A. ALDRIDGE & SONS  
Timber Merchants



Suppliers of All English & Foreign Hardwoods  
Softwoods, Veneers, Plywoods, etc.  
House Beams cut from old logs.  
Logs sawn to Customer's requirements.  
Specialists in Tree Surgery and Firewood.

Timber Yard, Heath Road, Eccles  
Quidenham, Norfolk, NR16 2PD  
Tel: 01953 887919, 01953 887415  
Mob: 07833 794803  
[email:cfatimber@aol.com](mailto:email:cfatimber@aol.com)

## Silfield Pitch & Putt

*A real fun test of Golf for beginners!*

- ✓ 18 Hole, Par 54.  
Tree lined fairways
- ✓ Club House, serving  
snacks - available all day
- ✓ Hot and cold drinks until  
closing time
- ✓ Licensed - with two patio areas

Open 7 days a week from the end of March to the end of October  
Winter days: Thurs, Fri, Sat, Sun

Sunnyside Farm, Silfield Street, NR18 9NL  
**01953 603199**

# Music

## D'Capo Choir

Tara Fiddle

tjr29@hotmail.com

## Wymondham Choral Society

liz@wymondhamchoralsociety.org.uk

## Wymondham Symphony Orchestra

Adrienne Cleary

Tel: 01953 789637

wymondhamsymphonyorchestra.org.uk

## Wymondham Youth Music Society

Thursdays at the Rugby Club

Linda White

Tel: 01953 529158

enquiries@wymms.org.uk





# A

## Accommodation

### No 10

10 Church Street, NR18 0PH  
Tel: 01953 711630

## Agricultural & Industry

### Gurney Reeve & Co. Ltd.

Suton, NR18 9SP · Tel 01953 603303

### Stuart Wright Tractors

A division of Stuart Wright Transport Ltd.  
35 Penfold Drive, NR18 0WZ  
Tel: 01953 604710

## Arts & Crafts

### Wymondham Players

secretary@wymondhamplayers.org.uk  
www.wymondhamplayers.org.uk  
Tel: 01953 605434 / 07867 681839

### Wymondham Writing Circle

Contact: Megan  
Tel: 07818241814

## Arts & Crafts Supplies

### Big C Craft

And Furniture Emporium  
4 Allenbrooks Way, NR18 0NW  
Tel: 01953 603320

### Geo. R. Reeve Ltd.

2 Market Street, NR18 0BB  
Tel: 01953 606770

### Needlecraft Haberdashery

4 Town Green, NR18 0PW  
Tel: 01953 605699  
www.needlecraftwymondham.co.uk



**Needlecraft  
HABERDASHERY**

Town Green,  
Wymondham, NR18 0PW  
**01953 605699**  
info@needlecrafthaberdashery.co.uk  
www.needlecrafthaberdashery.co.uk  
@the\_needlecraft\_haberdashery

- Dressmaking Fabrics
- Quilting Cottons
- Yarn
- Curtain Fabrics
- Alterations
- Haberdashery
- Made to Measure Curtains
- Workshops and Courses

Open: Mon - Sat 9.30am - 4.30pm (Closed 1pm Wed)

## Antiques

### **Wymondham Antiques Centre**

3 Town Green, NR18 0PN

Tel: 01953 604817

## Architectural

### **N J Myhill Architecture**

The Studio, 13 Damgate Street, NR18 0BG

Tel: 01953 603413

Mobile: 07799 825799

[www.njmyhill-architecture.co.uk](http://www.njmyhill-architecture.co.uk)

## Apothecary

### **Caley Apothecary**

4 Acorn Court, NR18 9AL

Tel: 01953 602237

[www.caleysapothecary.co.uk](http://www.caleysapothecary.co.uk)

## Banks & Building Societies

### **Barclays Bank**

45 Market Street, NR18 0AL

Tel: 0345 7345345

[www.barclays.co.uk](http://www.barclays.co.uk)

### **Lloyds TSB**

4 Market Place, NR18 0AG

Tel: 0345 6021997

[www.lloydstsb.com](http://www.lloydstsb.com)

### **Natwest**

5 Market Place, NR18 0YY

Tel: 03457 888444

[www.natwest.com](http://www.natwest.com)

### **Nationwide Building Society**

7 Market Place, NR18 0AG

Tel: 03457 2660884

[www.nationwide.co.uk](http://www.nationwide.co.uk)

## Building & Construction

### **Les Coopers Builders**

77 High Street, Wicklewood, NR18 9QA

Tel: 01953 606480

Mobile: 07740 986865

### **Mitchell Builders**

17 Silfield Road, NR18 9AU

Tel: 01953 607139

# C

## Cafés & Coffee Shops

### **The Abbey Refectory**

Office: 01953 607062

### **Bridewell Tea Room (Heritage Museum)**

Browick Road, Wymondham

Tel: 01953 600205

### **Roots Community Café**

Wymondham Baptist Church

10am - 1pm Monday to Friday

Tel: 01953 606520

## Cards, Gifts & Stationery

### **Geo. R. Reeve Ltd.**

2 Market Street, NR18 0BB

Tel: 01953 606770

Fax: 01953 606770

## Care & Nursing Homes

### **Dell Care**

Tel: 01953 423349, 07825 894171

## Carpenters

### **Stuart Gooda**

8 Chapel Lane, NR18 0DL

Tel: 01953 600790

[www.stuartgoodacarpentry.co.uk](http://www.stuartgoodacarpentry.co.uk)

## Caravans & Mobile Homes

### **Masterman Park Homes Ltd.**

For rent or sale

Valley Side Industrial Estate, NR18 0NN

Tel: 01953 606202

[www.masterman.co.uk](http://www.masterman.co.uk)



## Child Care & Play Centres

### **Bouncing Beans Nursery**

197 Norwich Road, NR18 0SJ

Tel: 01953 857311

[bouncingbeanschildrensnursery.co.uk](http://bouncingbeanschildrensnursery.co.uk)

### **Hulabaloos Childrens**

#### **Play & Party Centre**

Units 3-5, Great Expectations Business Park, London Road, NR18 9SJ

Tel: 01953 604526

[www.hulabaloos.co.uk](http://www.hulabaloos.co.uk)

### **Hummingbird Pre School**

Great Expectations Business Park, Unit 1, London Rd, NR18 9SJ

Tel: 01953 603333

### **Kaleidoscope Pre School**

Browick Road Primary School, Wymondham

Tel: 01798 343204

### **Mulberry Bush Day Nursery**

Norwich Common, NR18 0SP

Tel: 01953 603792

[www.mulberrybush.org](http://www.mulberrybush.org)

### **Noah's Ark Childrens Nursery Ltd.**

The Park, Wymondham College, Morley, Wymondham, NR18 9SX

Tel: 01953 798147

[www.noahsarknursery.org](http://www.noahsarknursery.org)

## Cleaning & Upholstery

### **Cleaning Doctor**

54 Folly Road, NR18 9QR

01953 542072

[www.cleaningdoctor.net](http://www.cleaningdoctor.net)

## Confectionery

### **Yum Yums Sweet Shop**

38 Fairland Street, NR18 0JS

Tel: 07799 086875

## Cookwear

### **Cookhouse Hire Ltd.**

37 Penfold Drive, NR18 0WZ

Tel: 01603 502321

### **Jarrolds**

7 Middleton Street, NR18 0AB

Tel: 01953 603251



**24/7  
CALL OUT**

**CONTRACTING  
SERVICES** | **07887 407113**

**cjbcontractingservices@gmail.com**

**Specialists in septic tank &  
treatment plant installation,  
maintenance, emptying**

- **BLOCK DRAINS CLEARED**
- **DRAIN JETTING**
- **CCTV SURVEYS & REPORTS**
- **HOMEBUYERS DRAINAGE SURVEY**
- **FULL TREATMENT PLANT INSTALLATIONS  
TO 2020 REGULATIONS**
- **TREATMENT PLANT SERVICE  
AND REPAIRS**
- **SOAKAWAYS REPLACED**
- **FRIENDLY ADVICE AND SERVICE**

**Hi-SPAN Ltd**  
Ayton Road  
Wymondham  
Norfolk  
NR18 0RD



*"Manufacturing cold  
rolled products in  
Wymondham for over  
60 years"*



**Kirsty Hayes**  
**bookings@wymondhamrfc.com**  
**01953 687923**  
**www.wymondhamrfc.com**



**TRADE COUNTER**  
**HYDRAULIC HOSES**  
**WHILE-U-WAIT**  
**HYDRAULIC RAM REPAIRS**  
**BESPOKE DESIGN &  
FABRICATION FACILITIES**  
**SWEEPERS & MATERIAL  
HANDLING ATTACHMENTS**

**Gurney Reeve & Co. Ltd.**  
Suton, Wymondham, Norfolk NR18 9SR

**01953 603303**

**sales@sweepersuton.co.uk**  
**www.sweepersuton.co.uk**



## Becket's Chapel

St. Thomas of Canterbury was canonized in 1172, two years after his murder, and in 1174 William d'Albini, Earl of Arundel (the son of the earlier William d'Albini), built a chapel in Wymondham dedicated to St Thomas. It eventually became a guild Chapel. In 1400 it was re-roofed with a hammerbeam roof. After the dissolution of the Abbey and all the religious guilds in the 16th century the Chapel became the Grammar School, which lasted until 1903.



# HOME FARM *Gin*

Crafted and bottled with love, by hand, in small batches using only natural ingredients and pure Norfolk water from the private water supply on the farm.

Home Farm Gin, Hethersett, Norfolk, NR9 3DF  
sales@homefarmgin.co.uk  
Order online at [www.homefarmgin.co.uk](http://www.homefarmgin.co.uk)



New distillery & shop now open  
10.30am - 12pm  
4pm - 6pm  
Mon - Sat

Open for collections • Monday to Friday 10.30 am to 12 pm & 4 - 6 pm • Saturdays 10.30 am - 12 pm

## HOME FARM CATTERY



- 🐾 Brand new, architect designed and purpose built to very high standard.
- 🐾 Daily cuddles and pampering.
- 🐾 Music to each chalet.
- 🐾 Scratch posts and toys available.
- 🐾 Choice of food from most main brands included and special diets fed if provided.
- 🐾 Fully Licensed and insured.
- 🐾 Individual thermostatically controlled heating to each chalet.
- 🐾 Each chalet cleaned daily and a deep steam clean before each new arrival.
- 🐾 Fully insulated and double glazed.
- 🐾 Choice of single, double or family chalets.
- 🐾 Sneeze barriers between each chalet.

**Call for a preliminary chat & arrange a visit 01603 811106**  
**[www.homefarmcattery.co.uk](http://www.homefarmcattery.co.uk)**  
**[paul@homefarmcattery.co.uk](mailto:paul@homefarmcattery.co.uk)**

Tel. 01603 811106 • Home Farm, Ketteringham Lane, Hethersett, Norwich NR9 3DF

## Dancing

### Ballroom Dancing With Donna

Tel: 01953 607474, 07766 751545  
[www.ballroomdancingwithdonna.co.uk](http://www.ballroomdancingwithdonna.co.uk)

## Dry Cleaning

### Norfolk Dry Cleaning

12a Fairland Street, NR18 0AW  
 Tel: 01953 607493

## Domestic Fuel

### Rix Petroleum

Tel: 01953 457057  
[www.rix.co.uk](http://www.rix.co.uk)





# Everything for the **motorist**

## MILL HOUSE GARAGE

- ✓ M.O.T Station
- ✓ Autologic Diagnostics
- ✓ Computerised Four-wheel alignment
- ✓ Servicing

- ✓ Exhausts, Batteries, Welding, Bodywork
- ✓ Fully Equipped Tyre Bay, Insurance & Accident Repairs
- ✓ Breakdown Service

**AIR  
CONDITIONING  
SPECIALISTS**

**ALL MAKES OF  
TYRES SUPPLIED AT  
COMPETITIVE PRICES**

**WE WILL  
COLLECT AND  
DELIVER YOUR CAR**

**LOAN CAR  
AVAILABLE**

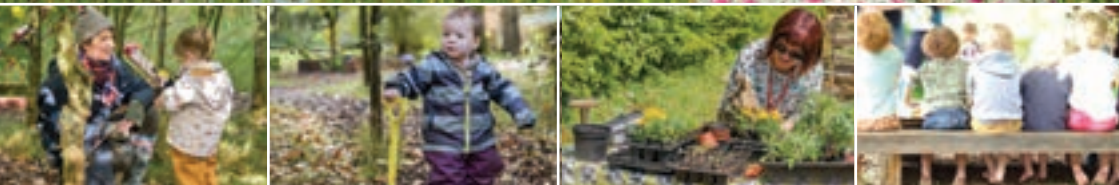
**SUPPLIERS  
OF  
FLOGAS**

**Norwich Road, New Buckenham, NR16 2BH**  
**T: 01953 860572, 01953 860947**

**office@millhousegarage.co.uk**  
**[www.millhousegarage.com](http://www.millhousegarage.com)**

# Limitless Learning Opportunities

From six months old to eight years



FOREST  
SCHOOL  
FOR LIFE



## Outdoor Early Years Education

We are set within 20 acres of private woodland, polytunnels, nature ponds and take babies from 6 months to 8 years and run a holiday club too. A small school with big wide open spaces for children to play freely and find adventures making memories to last a lifetime!

- ✓ Child Led
- ✓ Permaculture
- ✓ Healthy Eating



## Education

### **Forest School For Life**

Silfield St, Silfield NR18 9NL  
[www.forestschoollforlife.co.uk](http://www.forestschoollforlife.co.uk)

## Electrical Services & Suppliers

### **AC Appliance Centre**

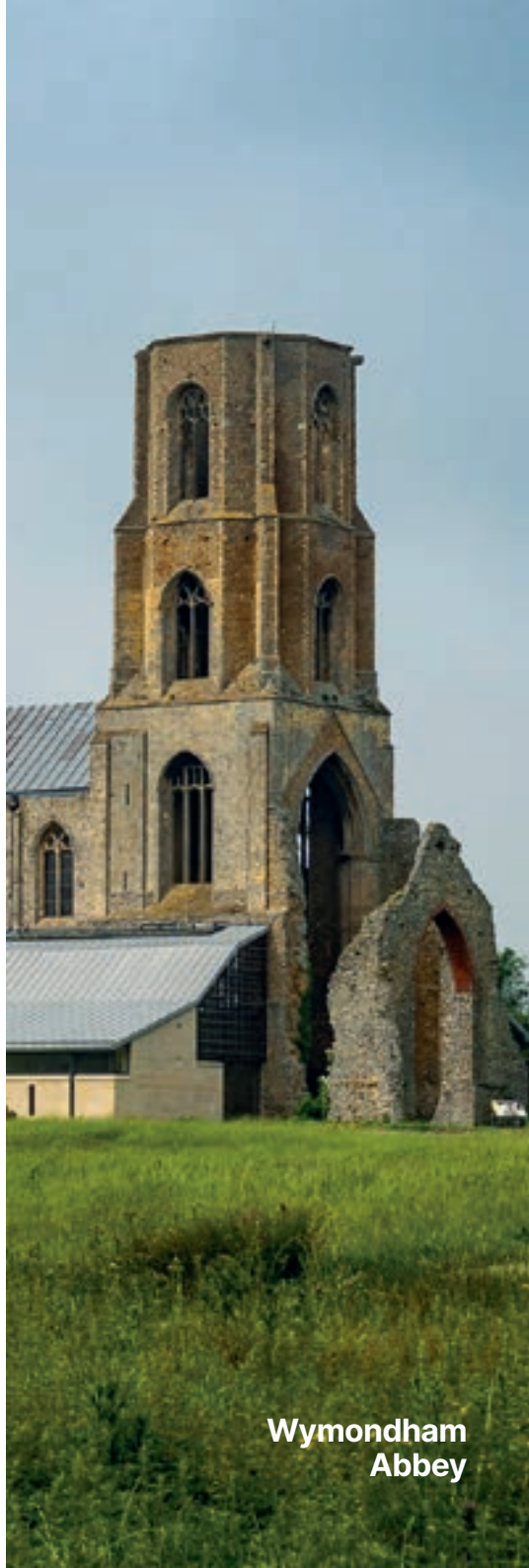
Unit 17 Spur Industrial Estate,  
Postmill Close NR18 ONL  
Tel: 01953 606688  
[www.acappliancecentre.co.uk](http://www.acappliancecentre.co.uk)

### **Adrian Dawes Domestic Appliances**

Tel: 01953 603195  
Mobile: 07885 706509  
[www.adriandawes.co.uk](http://www.adriandawes.co.uk)

### **Ian Myhill Electrical**

183 Orchard Way, NR18 ONZ  
Tel: 01953 609917  
Mobile: 07881 928066



**Wymondham  
Abbey**

# F

## Farm Shops, Food Shops, Delis, Drink

### Home Farm Gin

Home Farm,  
Ketteringham Lane, NR9 3DF  
[www.homefarmgin.co.uk](http://www.homefarmgin.co.uk)

### Reno Refills

17 Market Street, NR18 0AJ  
Tel: 01953 603738

## Financial

### ML Financial Associates

The Main Barn  
Elm Farm Business Park, NR18 0SW  
Tel: 01953 711123  
[www.mlfa.co.uk](http://www.mlfa.co.uk)

## Flooring & Furniture

### Cleaning Doctor

54 Folly Road, NR18 0QR  
Tel: 01953 542072  
[www.cleaningdoctor.co.uk](http://www.cleaningdoctor.co.uk)

### Jarrolds

7 Middleton Street, NR18 0AB  
Tel: 01953 603251

## Firewood

### Chris Aldridge & Sons Woodyard

Heath Road, NR16 2PD  
Tel: 07833 794803

## Funeral Services

### Andy Free

32 London Road, NR18 9JD  
Tel: 01953 452455

### Rosedale Funeral Services

16 Middleton Street, NR18 0AD  
Tel: 01953 601103  
[www.rosedalefuneralhome.co.uk](http://www.rosedalefuneralhome.co.uk)

## Garage Services & Car Sales

### **CSN Autos**

10 Spur Industrial Estate  
Postmill Close, NR18 0NC  
Tel: 01953 425983  
[www.csnavtos.co.uk](http://www.csnavtos.co.uk)

### **Mill House Garage**

Norwich Rd, New Buckenham NR16 2BH  
Tel: 01953 860572

### **Merc Pro Ltd.**

Unit 1a Wymondham Business Centre,  
Eleven Mile Lane, NR18 9JL  
Tel: 01953 423475  
[www.merc-pro.co.uk](http://www.merc-pro.co.uk)

### **Postmill Garage**

Ayton Road, NR18 OJX  
Tel: 01953 602691  
[www.postmillgarage.co.uk](http://www.postmillgarage.co.uk)

### **Stuart Wright Transport Ltd.**

35 Penfold Drive, NR18 0WZ  
Tel: 01953 604710

### **Wymondham Recovery Service**

Unit 19 Spur Industrial Estate,  
Postmill Close, NR18 0NL  
Tel: 01953 603709

## Garden Centres

### **Myhill's Pet & Garden**

36 Fairland Street, NR18 0AW  
Tel: 01953 602272  
[www.myhillspetandgarden.co.uk](http://www.myhillspetandgarden.co.uk)

## Home Improvements

### **Alcosa**

1 Penfold Drive, NR18 0WZ  
Tel: 01953 602482  
[www.alcosa.co.uk](http://www.alcosa.co.uk)

### **Garden Rooms Design**

Tel: 01603 720005  
[www.gardenroomdesigns.co.uk](http://www.gardenroomdesigns.co.uk)

## Hypnotherapy

### **Wymondham Hypnotherapy**

Tel: 07925 140931  
[www.wymondhamhypnotherapy.com](http://www.wymondhamhypnotherapy.com)

## Ironmonger

### **CC Clements**

5-9 Fairland Street, NR18 0AW  
Tel: 01953 602104  
Emergency: 07799 897534



## Kitchens & Bathrooms

### Plumb Right Bathrooms and Kitchens

17 Sycamore Avenue, Wymondham

Tel: 01953 456602

[enquiries@prbathrooms.co.uk](mailto:enquiries@prbathrooms.co.uk)

[www.prbathrooms.co.uk](http://www.prbathrooms.co.uk)

## Lifts

### Care Lift Services Ltd

Tel: 01603 433603

Mobile: 07545072118

[www.careliftservices.co.uk](http://www.careliftservices.co.uk)

## Legal

### Hansells Solicitors

10 Fairland Street, NR18 0AW

Tel: 01953 857578

## Lettings

### Oaktree Partnership

5a Allenbrooks Way, NR18 0NW

Tel: 01953 600051

[www.oaktreepremises.co.uk](http://www.oaktreepremises.co.uk)

### Orchard K Lettings

Tel: 01953 799188

[www.orchardklettings.com](http://www.orchardklettings.com)

## Manufacturing

### Hi-Span

Ayton Road, Wymondham, NR18 0RD

Tel: 01953 603081

[www.hi-span.com](http://www.hi-span.com)

### Stauff Anglia Limited

Unit 405, Copper Smith Way, NR18 0WY

Tel: 01953 857158

[www.stauffanglia.co.uk](http://www.stauffanglia.co.uk)

## Motor Auctions

### East Anglia Motor Auctions Ltd.

Copper Smith Way, NR18 0WY

Tel: 01953 859180

[www.eama-norwich.co.uk](http://www.eama-norwich.co.uk)

## Museum

### Wymondham Heritage Museum

The Bridewell, Norwich Road, NR18 0NS

Tel: 01953 600205

[www.wymondhamheritagemuseum.co.uk](http://www.wymondhamheritagemuseum.co.uk)

## Newspaper & Magazine Delivery

### **Norfolk News Deliveries Ltd.**

Wymondham, Hethersett and surrounding villages : 01953 600478

## Opticians

### **Cecil Amey Opticians & Health Care**

10 Market Place, NR18 0AQ

Tel: 01953 605181

[www.cecilameyopticians.co.uk](http://www.cecilameyopticians.co.uk)

## Organic Foods

### **Riverford Organic Farms**

Tel: 01953 859980

[www.riverford.co.uk](http://www.riverford.co.uk)

## Wymondham Library



## Painters & Decorators

### **Just Paint & Decorate**

Meadowfield, 13 Church Road, NR16 1BA  
Tel: 07909 338200  
[www.justpaintanddecorate.co.uk](http://www.justpaintanddecorate.co.uk)

## Pets & Animals

### **Home Farm Cattery**

Home Farm, Ketteringham Lane,  
Hethersett, NR9 3DF  
Tel: 01603 811106  
[www.homefarmcattery.co.uk](http://www.homefarmcattery.co.uk)

### **Leeders Animals Supplies Ltd.**

Unit 8 Oaktree Business Park  
Philip Ford Way NR18 9AQ  
Tel: 01508 570104

### **Myhill's Pet & Garden**

36 Fairland Street, NR18 0AW  
Tel: 01953 602272  
[www.myhillspetandgarden.co.uk](http://www.myhillspetandgarden.co.uk)

### **Wagdale**

Wymondham Road, Rush green  
Barnham Broom, NR9 4EA  
Tel: 07526 588455

## Plasterers

### **Jimmy Burt Plastering**

71, Hubbard Close, NR18 0DX  
Tel: 01953 713855  
Mobile: 07833 905606  
[www.jimmyburt.co.uk](http://www.jimmyburt.co.uk)

## Plumbing & Heating

### **Plumb Right Bathrooms and Kitchens**

17 Sycamore Avenue, Wymondham  
Tel: 01953 456602  
[enquiries@prbathrooms.co.uk](mailto:enquiries@prbathrooms.co.uk)  
[www.prbathrooms.co.uk](http://www.prbathrooms.co.uk)

## Post Office

### **Wymondham Post Office**

In Jarrold, 7 Middleton Street, NR18 0AB



## Removals

### **John Ryder Removals**

3 White Horse Street, NR18BJ  
Tel: 01953 605553  
[www.johnryder.co.uk](http://www.johnryder.co.uk)

### **Van And A Man**

Bradenham, Norfolk, IP25 7QR  
Tel: 01953 488919, 01362 687222,  
Mobile: 07751 171606  
[www.vanandaman.com](http://www.vanandaman.com)

## Restaurants & Takeaways

### **Big Fry Fish & Chip Shop**

36 Market Street, NR18 0BB  
Tel: 01953 603210

### **KayJays Grill**

11-17 Ayton Road, Wymondham  
Tel: 07747 835700

### **Station Bistro**

The Railway Station,  
Station Road, NR18 0JZ  
Tel: 01953 606433

## Roofing Specialists

### **RG Leverett Ltd.**

Pitched and flat roof specialist  
Tel: 01603 418818  
[www.roofsuk.co.uk](http://www.roofsuk.co.uk)

## Roofing & Solar Panels

### **Solarwise Roofing and Building Ltd.**

Tel: 07377 338275  
[www.solarwiseroofingandbuilding.co.uk](http://www.solarwiseroofingandbuilding.co.uk)

## Septic Tank Emptying

### **C B Contracting Services**

24 hour call out

Tel: 07887 407113

## Specialist Treatments

### **Back in Motion**

The Windmill Surgery,  
London Road, NR18 OAF

Tel: 01953 604331

[www.back-in-motion.co.uk](http://www.back-in-motion.co.uk)

### **Feet in Motion**

The Windmill Surgery,  
London Road, NR18 OAK

Tel: 01953 501299

[www.feet-in-motion.co.uk](http://www.feet-in-motion.co.uk)

### **Footsure**

Whartons Court, NR18 0UQ

Tel: 01953 425825

[www.facebook.com/footsure](http://www.facebook.com/footsure)

## Storage

### **Store Galore**

Bridge Ind. Est., Silfield, NR18 9AU

Tel: 07786 255011

[www.storegalore.co.uk](http://www.storegalore.co.uk)

## Supermarkets

### **Co-Op**

6 Market Street, NR18 0BB

Tel: 01953 856089

### **Lidl**

Farrier CI, NR18 0WF

Tel: 08009 777766

### **Morrisons Supermarket**

Post Mill Close

Tel: 01953 828879

### **Waitrose**

Norwich Road, NR18 0SH

Tel: 01953 607772

## Taxi Companies

### **Tan Cars**

1 Bellrope Lane, NR18 0QX

Tel: 01953 602693

[www.tan-cars.co.uk](http://www.tan-cars.co.uk)

## Veterinary

### **Chapelfield Veterinary Partnership Ltd.**

Postmill Close, NR18 0NL  
Tel: 01953 602139  
[www.chapelfieldvet.co.uk](http://www.chapelfieldvet.co.uk)

## Wellness & Therapy Services

### **Cup-O-T**

Situated at the Forest School for life  
Silfield St , Silfield NR 18 9NL  
By appointment  
[www.Cup-O-T.co.uk](http://www.Cup-O-T.co.uk)

## Work Wear & Safety Equipment

### **Mr Overalls Ltd**

4 Chestnut Drive, NR18 9SB  
Tel: 01953 607050  
[www.mroveralls.co.uk](http://www.mroveralls.co.uk)

## Want can a Podiatrist do for you?

We can assess, diagnose and treat Musculoskeletal disorders that affect the foot, ankle and lower limb.

### **Our services include**

- Corns, callus & verrucae
- Ingrowing & thickened-nails
- Diabetic footcare
- Nail surgery
- Laser treatment for fungal nails
- Shockwave therapy
- Steroid injection
- Sport related injuries
- Plantar Fasciitis

4 Whartons Court, Wymondham.  
NR18 0UQ  
[reception@footsureuk.com](mailto:reception@footsureuk.com)  
[www.footsureuk.com](http://www.footsureuk.com)





# Emergency & Helpful Telephone Numbers

## 999 Emergency Number

For; Police, Ambulance, Fire Brigade, Coast guard, Cliff, Cave and Mountain Rescue.

## 101 Non-Emergency

For Police use when you want to contact Police but it's not an emergency.

## 111 Non-Emergency Number

For Medical help or assistance and advice, for urgent treatment centre or call back.

## 112 Emergency Number

Will work on any mobile phone, anywhere in the world.

If possible call the Emergency Services from a **landline** as it can be more traceable.

### Town Council

Wymondham Town Council  
01953 603302

### Recreation Centre

Ketts Park & Recreation Centre  
01953 423499

### Funeral Directors

24 Hour Call outs-  
Andy Free Funerals : 01953 452455  
Rosedale Funeral Home : 01953 601103

### Opticians

Cecil Amey : 01953 605181

### Vet

Chapelfield : 01953 602139

### Taxi

Tan Cars : 01953 602693

### Railway (National Rail)

03457 484950

### Plumbing

Plumb Right Bathrooms and Kitchens  
Tel: 01953 456602

### Garage Services

Postmill Garage : 01953 602691



### Schools

Ashleigh Primary School  
01953 602410

Browick Primary & Nursery School  
01953 603061

Spooner Row Primary School  
01953 603356

Robert Kett Primary School  
01953 603405

Wymondham High Academy  
01953 602078

### Library

Wymondham library 01953 603319

## FIND US

82 UNTHANK ROAD, NR2 2RW,  
NORWICH, NORFOLK

No82  
THE UNTHANK



FULLY EQUIPPED  
BATHROOM



GYM



ECO-ENERGY  
LED LIGHTING

## *your* HOME AWAY FROM HOME

No82  
THE UNTHANK

**No.82 The Unthank** is a Boutique Hotel situated in the heart of **Norwich** and offers guests a one of a kind experience as soon as you step into the reception, with 19 beautifully serviced apartments to choose from, including two designed for mobility.

With a variety of beds available, whether your preference is king size, single or regular, all are ready to deliver a true night of luxury.

Each apartment has been designed to offer guests maximum levels of comfort with immaculate attention to detail.

### Corporate bookings only £85 per night

Regular business meetings? Book directly and receive the lowest possible price for your stay.  
Available Sunday - Thursday



SCAN TO  
*book*

# EXPLORE. EXPERIENCE. *live.*

No10  
THE ABBEY

## A NEW WAY TO *live.*

### Luxury self-contained & serviced apartments.

**Number 10 The Abbey** is your home away from home. The luxury hotel in **Wymondham** is perfectly suited to the modern business traveller and holiday maker alike, we offer a boutique and modern yet classical lifestyle experience; everything you need at the click of a button.

Book direct for the best available rates and enjoy a complete experience for just a fraction of the cost of hotels.

### Corporate bookings only £75 per night

Regular business meetings? Book directly and receive the lowest possible price for your stay.  
Available Sunday - Thursday



SCAN TO  
*book*



FULLY EQUIPPED  
BATHROOM



GYM



ECO-ENERGY  
LED LIGHTING

## FIND US

10 CHURCH STREET, NR18 0PH,  
WYMONDHAM, NORFOLK

# JIMMY BURT

## PLASTERING SERVICES

40 YEARS EXPERIENCE ESTABLISHED SINCE 1981

**ALL PLASTERING WORK • INTERNAL & EXTERNAL RENDERING**

**NEW BUILD • EXTENSIONS • DOT & DAB PLASTER BUILDING**

**INSURANCE WORK UNDERTAKEN • FREE QUOTES**

**FRIENDLY SERVICE • RESKIMMED ARTEX**



  
Norfolk  
Trusted Trader  
Member

Established 1981

TELEPHONE

01953 713855 • 07833 965606

[jimmyburtplasteringservices@gmail.com](mailto:jimmyburtplasteringservices@gmail.com)