

**WYMONDHAM TOWN COUNCIL**

SUMMONS TO ATTEND - NOTICE IS HEREBY GIVEN THAT THERE WILL BE A  
MEETING OF THE LEISURE ENVIRONMENT ENTERPRISE & TOURISM COMMITTEE  
ON TUESDAY 21<sup>st</sup> MARCH 2023 at 7.00 pm in the Council Offices.

**A G E N D A**

1	Apologies for absence	
2	Declarations of Interest	<b>A</b>
3	To confirm the minutes of the Leisure Environment Enterprise & Tourism Committee meeting held on 17 <sup>th</sup> January 2023.	<b>B</b>
4	To receive an update about progress of items arising from the last meeting of the committee held on 17 <sup>th</sup> January 2023/ previous meetings.	
5	Public Participation – members of the public may make representations, ask or answer questions and give evidence in respect of the business on the agenda below. In accordance with standing order 3 (f) this item is limited to 15 minutes.	
6	Rothbury Road Park – To consider proposals from Greening Wymondham.	<b>C</b>
7	Chandlers Hill – to consider type of tree to be planted. – Cllr. Cross.	<b>D</b>
8	Chandlers Hill/Kings Head Meadow – to discuss purchase of bench re Kings Charles III coronation. – Cllr. Cross	<b>D</b>

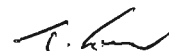
**Council Offices**

*Ketts Park*

*Harts Farm Road*

*Wymondham*

*NR18 0UT*



**T B Gurney**

*Town Clerk*

*15<sup>th</sup> March 2023*

Committee Members

<b>Cllr. Carsok</b>	<b>Cllr. Cross</b>	<b>Cllr. Astley</b>
<b>Cllr. Hubble</b>	<b>Cllr. Savage</b>	

## DECLARATIONS OF INTEREST AT MEETINGS

When declaring an interest at a meeting Members are asked to indicate whether their interest in the matter is pecuniary, or if the matter relates to, or affects a pecuniary interest they have, or if it is another type of interest. Members are required to identify the nature of the interest and the agenda item to which it relates. In the case of other interests, the member may speak and vote. If it is a pecuniary interest, the member must withdraw from the meeting when it is discussed. If it affects or relates to a pecuniary interest the member has, they have the right to make representations to the meeting as a member of the public but must then withdraw from the meeting. Members are also requested when appropriate to make any declarations under the Code of Practice on Planning and Judicial matters.

Have you declared the interest in the register of interests as a pecuniary interest? If Yes, you will need to withdraw from the room when it is discussed.

Does the interest directly:

1. affect yours, or your spouse / partner's financial position?
2. relate to the determining of any approval, consent, licence, permission or registration in relation to you or your spouse / partner?
3. Relate to a contract you, or your spouse / partner have with the Council
4. Affect land you or your spouse / partner own
5. Affect a company that you or your partner own, or have a shareholding in

If the answer is "yes" to any of the above, it is likely to be pecuniary.

Please refer to the guidance given on declaring pecuniary interests in the register of interest forms. If you have a pecuniary interest, you will need to inform the meeting and then withdraw from the room when it is discussed. If it has not been previously declared, you will also need to notify the Monitoring Officer within 28 days.

Does the interest indirectly affect or relate any pecuniary interest you have already declared, or an interest you have identified at 1-5 above?

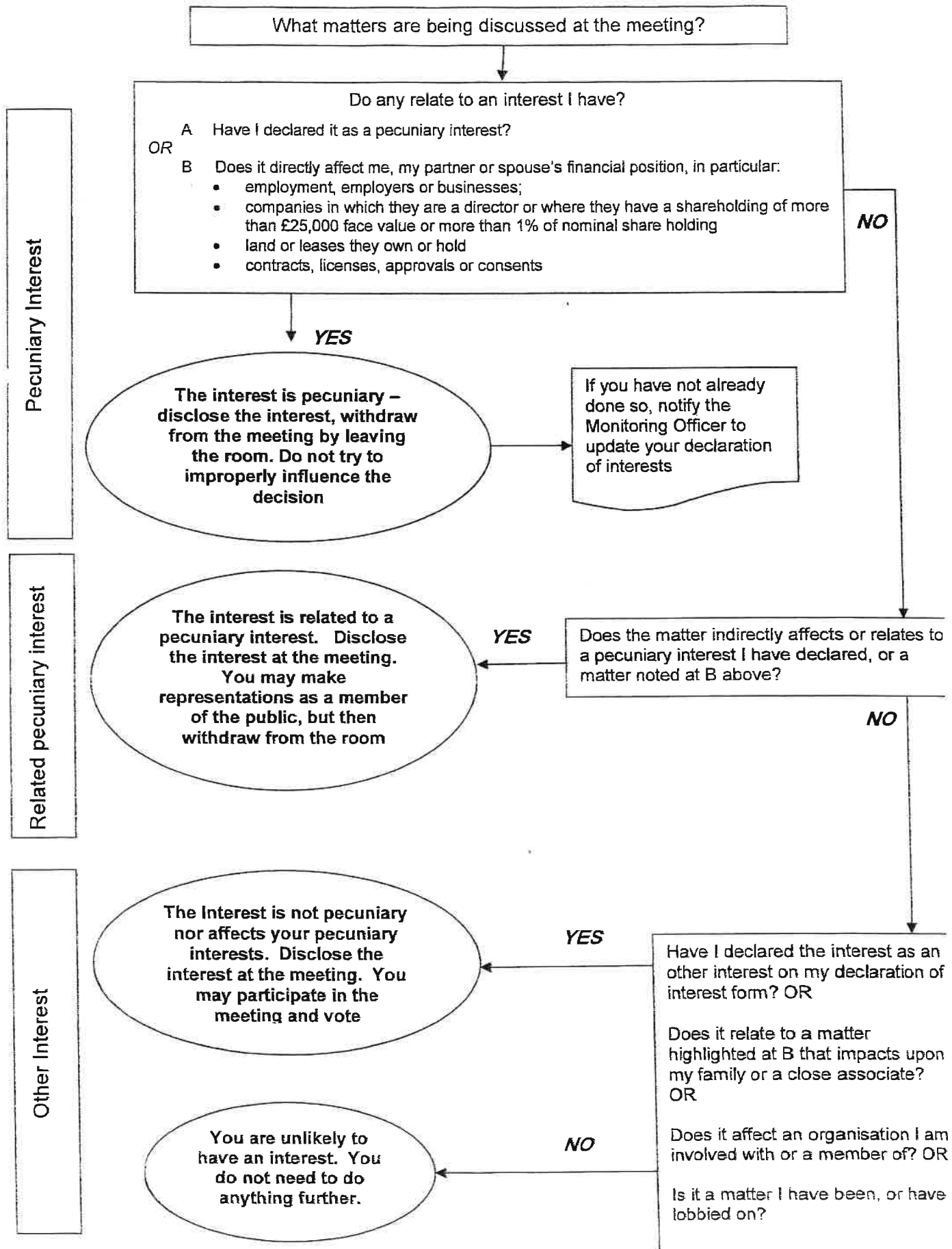
If yes, you need to inform the meeting. When it is discussed, you will have the right to make representations to the meeting as a member of the public, but must then withdraw from the meeting.

Is the interest not related to any of the above? If so, it is likely to be an other interest. You will need to declare the interest, but may participate in discussion and voting on the item.

Have you made any statements or undertaken any actions that would indicate that you have a closed mind on a matter under discussion? If so, you may be predetermined on the issue; you will need to inform the meeting, and when it is discussed, you will have the right to make representations to the meeting as a member of the public, but must then withdraw from the meeting.

FOR GUIDANCE REFER TO THE FLOWCHART OVERLEAF.  
PLEASE REFER ANY QUERIES TO THE MONITORING OFFICER IN THE FIRST INSTANCE

## DECLARING INTERESTS FLOWCHART – QUESTIONS TO ASK YOURSELF



**WYMONDHAM TOWN COUNCIL**  
**MINUTES OF A MEETING OF THE LEISURE, ENVIRONMENT,  
 ENTERPRISE AND TOURISM  
 COMMITTEE held on Tuesday 17<sup>th</sup> January 2023  
 in the Council Offices commencing at 7.00 pm**

Present:

Cllrs	K Carsok (Chair)
	P Hubble
	R Savage
	K Cross
	P Broome (substitute for Y Astley)

Also Present:

3 members of the public.  
 Cllr. Hurn  
 SNC -Town Co-ordinator

LE01/23	<u>APOLOGIES FOR ABSENCE</u> – Cllr. Astley.
LE02/23	<u>DECLARATIONS OF INTEREST</u> <ul style="list-style-type: none"> <li>• Cllr. Carsok – Volunteer with Wymondham In Bloom.</li> <li>• Cllr. Hubble – Member of Greening Wymondham.</li> </ul>
LE03/23	<u>MINUTES OF MEETING</u> Upon the proposition of Cllr. Broome and seconded by Cllr. Cross it was unanimously resolved to approve the minutes of the Leisure, Environment, Enterprise & Tourism Committee meeting held on 15 <sup>th</sup> November 2022 as a correct record.
LE04/23	<u>PROGRESS UPDATES</u> <ul style="list-style-type: none"> <li>• Cllr. Cross – Chandlers Hill start date – Not yet known.</li> <li>• Tourist Information Notice Board – No further information from Heritage Museum. They are meeting next week.</li> <li>• Ketts Park Grass Cutting – No further contact from South Norfolk Council.</li> </ul>
LE05/23	<u>PUBLIC PARTICIPATION</u> <ul style="list-style-type: none"> <li>• Greening Wymondham /Wymondham in Bloom representatives – spoke in favour of agenda item 9. outlining the thoughts and proposals therein.</li> <li>• Resident – agenda item 9 – audit of all green spaces should be considered.</li> <li>• Resident – agenda item 6 – name should reflect what building is doing.</li> <li>• Resident – agenda item 7 – invited Council to oversee events re Coronation. Suggested Market on the same day from 12.00 noon to 4.00pm.</li> <li>• Cllr. Hurn – agenda item 6 – opposed name change. Cost of amending signage publications etc. Visitors look for Tourist Information Centre. New Town Co-ordinator is promoting tourism.</li> <li>• Cllr. Hurn – agenda item 8 – wants to see improvements to playgrounds but no funds available as Community Infrastructure Levy (CIL) has been allocated to other projects and improvements will have to wait until further funds are available.</li> </ul>

LE06/23	<p><u>TOURIST INFORMATION CENTRE</u> Discussion took place on the consideration of changing the name to Town Information Centre and what information is provided. Cllr. Hubble suggested that the Information Centre only could be used. Cllr. Savage commented that 'Tourism Information Centre' is a well-known brand all over the country and any change would cause confusion, there was also the costs of changing signage, leaflets etc. The Town Co-Ordinator could talk to the staff and review the information available.</p> <p>Cllr. Carsok then withdrew her suggestion, and the facility will continue to be the Tourist Information Centre.</p>
LE07/23	<p><u>KING CHARLES III CORONATION</u> Cllr. Carsok advised that she had spoken to South Norfolk Council (SNC) and they had no further information re-funding or organizing events. Cllr. Hubble expressed disappointment with SNC and commented that the Town Team would not be organizing anything, and street parties could be organized by residents. Cllr. Savage commented that King Charles III wanted a low-key event and that whilst the Council could support individual events there was no financial funding available. Cllr. Cross advised that flags and bunting should be put up and a market from 12.00 noon to 4.00pm should be organized. After further discussion as to the validity of a market upon the proposition of Cllr. Cross and seconded by Cllr. Hubble it was agreed that Cllrs Carsok/Cross would produce a leaflet to be placed on the Council's Face book page and existing Market traders would be asked if they wanted a market organized. If so, then further discussion would be needed as to who will organize the event and what road closures (if any) would be required.</p>
LE08/23	<p><u>COUNCIL PLAYGROUNDS</u> Cllr. Carsok presented list of Council owned open green spaces including those with play equipment. Discussion then took place on the process for replacing equipment which has been funds received from housing developers. Cllr. Savage then commented that CIL money recently received and funds due in the future have already been allocated and therefore are not available to refurbish the play areas. There is a small reserve to effect economic repairs. If equipment needs to be replaced the Council would have to look for outside funding.</p>
LE09/23	<p><u>MANAGEMENT OF PLAY AREAS</u> Cllr. Carsok presented a paper prepared by Greening Wymondham outlining their initial thoughts for the future and how improvements could be made through co-operation between the Councils grounds care staff and volunteers. It was made clear that the Council has only limited resources and there are pressures on budgets. The difficulty in recruiting and retaining more volunteers was noted. Cllr. Hubble suggested that a full audit of all green spaces should be undertaken. Cllr. Broome advised that he had compiled a list of play areas, a number of years ago, by walking around the Town and invited Cllr. Hubble to carry out an open spaces audit. It was resolved that if Greening Wymondham wanted to set up an informal group, to include any Councillors who wished to take part, to undertake some research and report back to the Committee then this was acceptable. Councillors Hubble, Cross &amp; Carsok indicated their willingness to be part of the group.</p>

*[The meeting closed at 20.33 pm]*

DATED this ..... day of .....2023

SIGNED ..... (Chairman)

## **To LEET Committee 21 March 2023**

### **Rothbury Park Improvements Attachments: Proposed Plan, Costing, Consultation Analysis and Summary of Comments**

#### **Background**

Following a discussion with the Town Council in 2021 Greening Wymondham undertook to commission professional advice on tree planting and the like in the basis that we provide habitat for biodiversity and access for maintenance equipment. Norwich City Council Landscape Architects were selected, at a cost of £3,000 and money was generously donated towards this cost from the Wymondham Rotary and Waitrose.

#### **Consultation**

Greening Wymondham members carried out initial public consultation in three ways – interviewing users in the Park, through Robert Kett School with the help of Head Cara Fahy and with users of the START Studio in the Market Place. Based on findings we were able to agree a brief with the Landscape Architect and she began work on the plan in 2022. The GW Team also undertook background research and in particular visited several Norwich Parks to understand what might be possible to improve facilities at Rothbury.

As the design developed it was scrutinised by a Steering Group comprising local residents, the Rotary representative, Town Councilor Richard Elliott and Members of GW. David Roberts, a local resident, has also commented on behalf of the Wymondham Access Group. The Town Clerk and the Grounds Team have been kept informed, as has the Robert Kett.

Finally on 11 February we were able to show the Plan to residents and others at a Public Consultation at the Rothbury Community Centre and then for two weeks at the Library.

#### **The Design**

The Plan we are presenting to you today is a result of careful consultation with the public and close liaison with the Landscape Architect. Foremost in our vision was that we as a society have a responsibility to encourage and establish the best of green habitats to encourage carbon sequestration, biodiversity and wildlife. We asked our Landscape Architect to address improved access for all, generous seating providing opportunities for social contact, improved play provision and above all more planting. Residents of our town need green spaces close to their homes for their physical and mental wellbeing, especially children and the elderly. Our consultations with residents and others have reassured us that this plan answers all those objectives.

#### **Outcomes from the Public Consultation 11 – 26 February.**

Many specific issues were raised at the Consultation in February which we will address once agreement in principle has been achieved. Suffice to say, the majority of people are in favour but we will continue to look carefully at singular objections. Some of the more contentious issues, such as dog mess, access and maintenance, are already being explored but will need further discussion to find the best answer. Some issues don't have a black and white solution. We feel further meetings will help residents to discuss and agree plans. It is pleasing to note that a Friends of group is starting to come together.

The attached appendices show an analysis of the feedback forms and a thematic summary of Consultation Comments.

#### **Funding the work**

The total cost is estimated at around £100,00. This total could be broken down as follows;

Phase 1 – Infrastructure – paths, gates and mounding approx. £45,000 – 53,000

Phase 2 – Play equipment and furniture –approx. £33,000 – 39,000

Phase 3 - Soft landscaping – trees and green planting £8,250 for purchase of trees and plants, planting done by community.

There has been some discussion about how the cost could be met and initial ideas suggest that this could be apportioned as follows –

Phase 1 met from Public funds –WTC resources CIL and other, SNDC Tier 2, Greater Norwich Growth Board and other sources.

Phases 2 and 3 could come from Community raised funds, and charities with an interest in such projects, with a contribution from LA funds where appropriate.

### **Future Maintenance**

The Council already allocates funding annually for repair of equipment and general upkeep of soft landscaping. No actual studies have been made of whether the proposed scheme would involve more or less maintenance cost to the Council than existing. However first thoughts are that the Community could work with the Council to look after the general maintenance of the park. For this to succeed will require an established Community Group and for robust mechanisms to be in place to enable co-working with volunteers. It is suggested that a sinking fund could be established by the Council to cover long term expenses (for all parks and open spaces) such as occasional replacement of equipment, tree pruning and path repair.

### **Proposal**

**We are asking for approval in principle at this stage. The plan has received enthusiastic support from residents and other consultees.**

**To agree that a group made up of GW members, community nominees, selected sponsors and nominated Councilors shall work on a feasibility plan to determine timescale, funding, maintenance and community involvement.**

**The working group will report back before October with recommendations to carry the proposal forward.**

Authors: Ann Rostron and Mary Howard on behalf of Greening Wymondham



# ROTHBURY PARK

## DESIGN PROPOSAL

The design aims to improve the accessibility of the park and extend the variety of activities that can take place among children, accompanying adults and older people. This is achieved by creating a series of pocket spaces that offer different activities and types of play, linked by direct and more adventurous routes. By providing a solid path between the two entrance points of Rothbury Road and Orchard Way, the park becomes a green corridor between the two roads that connects wildlife and people with their surroundings.



### NATURAL PLAY

New informal play elements have been included throughout the park. These features focus on developing children's movement and balance while allowing them to experiment and play creatively in groups or individually.

Use of materials in their natural form, including tree stumps and logs, for climbing structures and trim trails will enable children and young adults to explore and reconnect with nature.



### GATHERING SPACES

The pocket areas are designed to encourage social interaction between different age groups by overlapping and connecting the different spaces. Complemented by an increased number of benches and tables, the park's central recreation ground will provide a flexible area which can be used for sports, events and pop-up activities. The creation of the pocket spaces allows other activities to continue to take place in the surrounding areas.



### CONNECTING ACTIVITIES

The variety of available routes offers an engaging exploration of the park. The main resin bound gravel path provides a stable route for wheelchair users, buggies and maintenance vehicles, while the cut lawn path reinforced with grass grid gives a more natural and soft connection between the spaces.

For the younger generation there is an opportunity to incorporate playfulness in the journey by taking the shortcuts via stepping logs and balancing beams. The trim trail paths allows a 'play on the way' experience and encourages parents to walk through the park on the way home or to other destinations.



### WILDLIFE ENRICHMENT

Between the pocket areas lush meadow vegetation and hedgerows support the foraging and habitat provision for wildlife. The proposal includes unmaintained buffer areas with shrub cover between the neighbouring houses and the park to create a natural boundary, reduce the noise impact, and lower the general maintenance requirements. The meadow planting allows people to observe wildlife and gives opportunity for schools and other groups to organize educational events and workshops.



Groundworks		Area	Qty	Unit price	Total	Notes
(incl. ground preparation for resin path, creating mounded areas)		n/a	5-10 days	300/day	1500-3000	Contractor can estimate how long the job would take and price this more accurately.
				Subtotal:	£1,500-£3,000	
Soft landscaping						
Wildflower overseeding mix (1kg/300m2)		1340m2	4.5kg	£180/kg	810	
Large Trees (standard, min 12-14 girth or multistem)		n/a	8	£200/tree	1600	
Small trees or Large shrubs, Multistem trees		n/a	12	£80/tree	960	
Whip shrub planting (mixed native shrub species, bare root 40/60, 5 plants/m2)		650m2	3250	£1/plant, £5/m2	3250	
Ornamental planting (2L container herbs, 8 plants per m2)		40.5m2	324	£5/plant, £40/m2	1620	Planting could be carried out by volunteers to save on labour costs.
Labour ?				Subtotal	£8,240	
Hard surfaces						
Resin path		310m2	n/a	£70-90/m2	21700-27900	
Grass grid with turf		265m2	n/a	£40/m2	10600	
Basketball area wet pour rubber surfacing		30m2	n/a	£80/m2	2400	
Safety surfacing around play surfaces		110m2	n/a	£80/m2	8800	
				Subtotal:	£43,500-£49,700	
Furniture						Based on Broxap online catalog range.
Benches		n/a	10	£250-400	2500-4000	
Picnic benches		n/a	6	£150-£250	900-1500	
Bins		n/a	8	£200	1600	
Cycle stand		n/a	5	£200	1000	
Bollards		n/a	3	£300	900	
Compliant entrance gate (bespoke)		n/a	1	£2,000	2000	
Installation (25%)				2225-2750		
				Subtotal:	£11,125-£13,650	
Play equipment						These are based on different play supplier's catalog. Best to quote Caledonia Play or Ruskins for bespoke and recycled fallen trees. <a href="https://www.ruskins.co.uk/playtrees">https://www.ruskins.co.uk/playtrees</a> <a href="https://caledoniaplay.com/product-category/commercial-play/natural-play/">https://caledoniaplay.com/product-category/commercial-play/natural-play/</a>
Stepping logs		n/a	4	£350/trail	1400	
Balancing beams		n/a	2	£250/trail	500	
Climbing frame		n/a	1	£7000-10000	7000-10000	
Bleacher seating logs		n/a	2	2500-5000	2500-5000	
Boulders		n/a	6	1000-2000	6000-12000	
Installation (25%)				4350-7225		
				Subtotal:	£21,750-£36,165	
TOTAL					86,125-110,855	
					+ ~10% contingency	£94,750-£121,950

Prices are indicative and subject to manufacturer/contractor's quote.

## GREENING WYMONDHAM

### SUMMARY OF CONSULTATION COMMENTS

#### Rothbury Road Park Public Consultation

February / March 2023

#### Introduction

During February 2023 Greening Wymondham ran a public consultation on a new design proposal to transform Rothbury Road Park into a recreational space that aims to be both inclusive and accessible to people, while at the same time providing a 'green corridor' to better connect nature and support wildlife in this part of central Wymondham.

Consultation events included an 'in person' session at Rothbury Road Community Centre on the afternoon of Saturday 11th February 2023 and a consultation display stand hosted by Wymondham Library from 13th to 27th February 2023.

Members of the public were invited to complete a survey questionnaire about their views on the plans and to add comments on any disagreements they had with the proposals, plus any additional suggestions to improve the park.

In total 80 survey questionnaires were completed, out of which 64 included additional comments while 16 contained zero comments following the completed the tick-box questions. One person had returned two questionnaires; one at the Community Centre and another with further additional comments at the Library.

The responses to survey participants' comments have been grouped into themes arising and are summarised below.

#### 1 / Comments on the current state of Rothbury Road park

Although the survey did not specifically ask any questions about the current condition of the Rothbury Road Park, nine survey participants nevertheless expressed their views and concerns about it. These comments were all negative and focused on:

- a) **Antisocial behaviour:** teenagers being noisy, swearing, people gathering at night (3 comments)
- b) **Criminal damage:** rubbish bins being set alight (1 comment).
- c) **Inaccessibility:** difficult terrain for wheelchair use, buggy and pushchair access, mud (3 comments)
- d) **Unpleasant environment:** Dog waste bins smelling, dog mess being left behind, ugly container unit (3 comments).
- e) **Under-use / neglect:** Common birds no longer seen in adjoining gardens (Qr.41 "*I haven't seen a goldfinch for a long time in my garden*"); a '**forgotten**' area (2 comments).

It is of note that the person who mentioned 'mud' (Qr.62) stated that they broke their arm last year as a result of it, highlighting both the hazardous nature of the terrain in its current condition due to lack of a proper pathway.

## 2 / General 'positive' comments on the proposals

In total, 22 comments were received specifically praising the proposals for the park and also Greening Wymondham for initiating them. A few examples are as follows:

*"The entire proposal looks amazing"* (Questionnaire No.30)

*" (I) believe these (plans) will provide a much more attractive environment for both local residents and wildlife* (Qr. No.2)

*"I think everything has been thought about by the architects and hopefully this design will be passed and go ahead"*. (Qr. No. 43)

*"This is BRILLIANT - I live on Rothbury Close - so the extra trees can hopefully encourage more wildlife in my garden"* (Qr. No.64)

*"Brilliant plan! Well done Greening Wymondham"* (Qr. No.72)

## 3 / Cautious Concerns

Though participants were overwhelmingly positive about the proposals for Rothbury Park and no participants objected to the overall principle of transforming the site, a very small number raised cautious concerns about the project generally. Most notably:

- a) **Financial costs to the public** (1 comment: "I disagree with spending money on trees" Qr.20)
- b) **Maintenance and upkeep** (2 comments)
- c) **Local input / engagement** (1 comment).

However, these issues raised were accompanied by further useful suggestions:

- The participant who commented that "*I disagree with spending money on trees*" offered to donate walnut trees "if they take".
- The participant concerned about upkeep suggested "*a group called 'Friends of Rothbury Park' to help to maintain gardens.*" (Qr.77).
- Another suggested "*Ask people could you sponsor a tree?*" (Qr.34)
- With regard to local views, one participant (Qr.37) cautioned:

*"This is an opportunity for the local community to contribute to change to a valued green space. Their views MUST be noted."*

- Another commented "*Make sure there is something for teens.*" (Qr.68)

The comments and solutions offered by the participants on these aspects of the project emphasised the value of working together collaboratively with local residents on the project and enabling local people to feel a sense of agency and ownership of the scheme, should it come to fruition.

#### 4 / Comments on the plans regarding addressing antisocial Behaviour

Six comments were received relating to the current experience of antisocial behaviour and how the proposals might impact on this:

- Four participants remained concerned about negative behaviours such as: noise, swearing and tree climbing by teenagers gathering in the evening close to properties; fear of drug abuse and of unwanted motorbike access through the park.
- One participant (Qr.13) suggested moving seating from the proposed picnic area either to the opposite side of the park further away from residential properties or *"Moved up slightly towards the Rothbury entrance."*
- Another wished to retain the 'kissing gate' on the Orchard Way entrance to prevent motorbikes being driven through the park (Qr.65)

The comments highlight further that subsequent communication with residents directly affected by antisocial behaviour may be helpful in terms of clarification of the existing plans and how their design may reduce noise and antisocial behaviour (e.g. through thoughtful planting of noise-reducing, dense shrubs etc, and the knock-on effects of increasing usage of the park by families potentially inhibiting antisocial groups & behaviour) and / or working together to adjust other plans as required.

#### 5 / Accessibility and Inclusion (people and dogs!)

Eight participants commented on the need to improve the current physical accessibility of the park and to increase its use by all.

- Four participants welcomed specifically the need for the proposed improvements of the park's entrances and pathways, especially in relation to a surfaced path to facilitate the ease of movement of prams, pushchairs, wheelchairs and scooters along walkways.
- Another stated specifically with regard to the proposals to improve the park that they were:  
*"Very pleased with the plans for the basketball area and **the path through**".* (Qr.43)
- Additional suggestions included:
  - making an *"...extra entrance to the park at the south-east corner"* (Qr.42)
  - installing a ramp to run alongside the proposed steps on the eastern side of the park, if possible (Qr.76).
  - Conversely, one participant suggested "no need" for the Orchard Way entrance if there were a *"one-way system"*! (Qr.49).
- In terms of play equipment age groups, one participant suggested that the plans should *"Ensure that the equipment is suitable for children, younger and older."* (Qr.31).
- One participant made a specific comment in relation to dogs: *"I would prefer dogs allowed but on leads - but this would not put me off"*. (Qr.30).

It is clear from the comments received that the local community very much welcomes improved access into the park and good quality pathways along it to facilitate ease of passage around and through the site for all, and especially those with mobility needs.

## 6 / Potentially negative impact on residents' properties

In all, six participants raised some concerns regarding the impact of some proposals on properties adjoining the park and on Rothbury Road itself. These included:

- a) **Increased parking in the area:** *"Rothbury Road will become a car park"* (Qr.9),
- b) **Planting / equipment blocking residents rear access to the park:** e.g. *"Do not block my gate"* (Qr.41)
- c) **Potential noise and visual impact of planting and equipment close to residents' properties:** e.g.  
*"I object to light being cut out of my house"* (Qr.20)  
*"Could (benches) be moved along so as not to be in line with our windows?"* (Qr.50)

Although the comments highlighted particular concerns about the potential impact of the proposals on residents properties, the residents making them did not however object to the proposals in principle. The comments usefully suggested alterations that could prevent negative impacts on their lives and properties.

Further, bearing in mind that the same residents had highlighted negative experiences of noise, intrusion and access issues with the park in its *current* condition, the comments are useful in enabling the proposals to be adapted where necessary in such a way as to improve the overall environment for the residents as a 'net gain'. This may be best achieved by working directly with the residents affected in order to achieve the best outcomes for all.

## 7 / Comments on sports and play equipment proposals

Seven responses were received to proposals for sports and play areas. They were a mix of positive and critical / querying comments:

### a) Positive

Three comments related specifically to the sports and play area proposals.

- Two of these comments centred on the need for improved football pitches with goals. One participant noted:

*"I have to take my son and friends to Wicklewood Park during the hols as no parks in Wymondham have actual practice goals."* (Qr.4).

- Another stated that the current play equipment needs updating "desperately", while another commented that they *"Like the idea of tree forest play"* (Qr. 77).

### b) Critical

- Four comments queried the retention of the football pitch as the central focus of the new park design with the placement of family activities, play and planting around the periphery of the pitch.
- One participant questioned whether there would be *"enough room for players and other park users, not to encroach on each others' space?."* (Qr.70),



- Two others questioned the need for a football pitch at all, when other provision exists elsewhere in the town and other activities could be encouraged. One suggested:

*"It's a shame the area isn't focused around families and younger children, rather than a football pitch, making a central seating area and possibly a track for younger users, with activities around the outskirts of the area. **Even a cycle track or running track in the centre** would be great for young children. It's not a large area and it's sad to see football dominating yet another area; not all children like football" (Qr.10)*

The comments on the proposals for sports and play equipment overall were therefore mixed, with some declaring that a football pitch was very much needed, while others felt the opposite and that additional resources were needed for those who don't like football. This raises the question as to whether there is space for a compromise, such as adapting the 'pitch' design to be multi-functional (e.g. incorporate additional features, such as a marked out 'running 'track' etc).

## **8/ Comments on landscaping**

### **a) Appropriateness to landscape**

- Two participants suggested including a watery feature such as a pond or 'bog garden' in a part of the park that retains moisture (Qr.21 & Qr.45)

### **b) Landscaping concerns**

Five participants offered cautionary comments on some of the landscaping plans. These included:

- Concern that trees will grow too big and will need to "be felled in 50 years". (Qr.25)
- Play mounds - a younger child could hurt themselves & might be difficult for buggies.
- Boundary planting to east side should be designed to deter children climbing over fences & trespassing.
- Sports area not to be 'overbearing' on other areas of the park.
- Didn't like planting (child's response).

The less positive comments on the landscaping design were very few and could be addressed with further clarification of planting intentions and appropriateness, plus more detailed, fuller explanation to local people of the purpose of some of the play landscaping feature 'play mounds'.

## **9 / Suggested improvements**

A total of 34 suggestions for additional features and improvements to the plans were received, focusing on the two main areas of 'planting' and 'features' as follows:

### **a) Planting suggestions**

- Fruit trees (2)
- More trees (2) (especial between play area & recreation ground)
- Wild flowers (1)

- Mix of native trees, shrubs and flowers providing colour throughout the seasons (2)
- Denser native planting to address noise / provide better habitat for creatures (1)

#### **b) Features and 'furniture'**

- More litter bins (4 responses)
- More dog poo bins (2)
- Remove existing (smelly) dog poo bin from Orchard Way entrance (1)
- Benches (4)
  - Move to centre of park
  - Install commemorative benches
  - Place to sit, colour & read
  - Place a bench at Rothbury Rd entrance for clear view of Abbey
- Basketball pitch
- Install toilets (2)
- 'No Parking' sign in front of gates
- Direction signage from Morrison's junction & Pople Street
- Resin path / hard surface pathway (2)
- Table tennis
- Bird feeders
- Cafe in the 'picnic pocket'
- Picnic pocket
- An extra entrance at the south-east corner
- 'Pub'!
- Skate / BMX area
- Better play area

Some of the suggestions were for features that already existed in the proposals. It could be assumed, therefore, that the survey participants were reinforcing their views that these items were indeed desired. Others (e.g toilet facilities and refreshments) may be a little more ambitious but could perhaps be considered for future developments, where appropriate.

It is interesting to note that only two suggestions related directly to supporting wildlife. These were a suggestion for 'bird feeders' and planting that would provide good habitat for creatures. The low number of suggestion in this regard may be due to consultation 'tick box' questions focusing mainly on aspects of the plan that impact on people and that participants may have had a personal interest in nature and biodiversity to therefore consider the implications for nature.

#### **10 / Other comments**

Finally, six comments were received, four of which were questions:

Qr.11 (Will there) *"be fencing along the side of the park from outside of property no.s 32/4 down to No.40 that face the park to prevent people taking shortcuts and to prevent children using the corner, where property no.32 is situated, as a bike launch pad?"*

Qr.17: *"Would like to check where you would like to locate the dog bin on Orchard way as I think it should be in the park sometime."*

Qr.62: *"You said any new trees would need watering, is there a group of people willing to do this?"*

One comment offered advice regarding funding:

Qr.55 *"Not on the park but applying for funding - Contact Julie Ringer at South Norfolk Council.  
Ask about CAF funding and other grant applications. Good luck!  
[julie.ringer@southnorfolkandbroadland.gov.uk](mailto:julie.ringer@southnorfolkandbroadland.gov.uk)*

**Note:** One participant asked to be kept informed by letter (see Questionnaire 70).

The Greening Wymondham team may wish to respond to the questions directly to the residents concerned.

12-3-23 TO: WYMONDHAM TOWN COUNCIL

FROM: MR. [REDACTED]

[REDACTED] ROTHBURY ROAD, NR18 0  
MS. [REDACTED]  
[REDACTED] ROTHBURY ROAD  
NR18 0LL

ref. - Rothbury Playing Field

Dear Councillors,

We understand that you will be asked to consider some alterations to Rothbury playing field by a group calling themselves Greening Wymondham, whoever they are.

As we understand it the Town Council is responsible for the upkeep of the field and a good job you do cutting the grass regularly emptying the bins, removing trees etc. so keeping it an open space for children to play safely and dogs to run freely as it can be seen from end to end at all times with fine views of the abbey as well so it seems odd that any outside group would ask you to consider changing anything without consulting the residents like ourselves who live next to the field and would be adversely affected by it, so we are writing to you directly to voice our concerns.

We have seen a copy of the planned proposal and tried to get some answers to our concerns from Greening Wymondham with little response so here are our issues for you to consider

1/ Traffic in Rothbury Road is a lot busier now and despite 20 MPH signs at each end and speed humps most drivers ignore these so as the field has no car park, drivers are parking on the road dropping off children because of the restrictions at Robert Kett school and even bringing dogs in cars to the field. The road is also a rat run to avoid the town centre so any increased activity on the field will only make matters worse and an accident just waiting to happen especially for cyclists, children, elderly and dogs.

2/ Vegetation seems to be covering a large part of the plan but it doesn't say what type or height they will grow to and I wonder who is going to maintain them like pruning,



watering, clearing up all the leaves in the autumn as they blow into my garden along with the litter etc.

3/ Antisocial behaviour could return to the area with lots of cover and hideaways created along with noise litter and vandalism issues. There used to be a row of trees along Rothbury Road edge to the field which were removed on the advice of the Police so they could view the whole field which stopped the problem at the time, we don't want a return of that.

4/ The Air Ambulance has used the field on at least five occasions as it is near Ogden Court hospital and old folks home and Popple Street and Queensway areas, so another reason to keep the field an open space uncluttered with vegetation, their job is hazardous enough as it is and you never know when you might need them.

5/ Encouraging wildlife was also mentioned on the plans so we wonder if that includes rats, mice, grey squirrels, seagulls and any other vermin attracted by the leftovers from the picnic tables

In conclusion the only improvements that would actually benefit the local residents is an allweather footpath from top to bottom round the edge suitable for prams and mobility scooters etc. also the removal of the blue metal storage container which is a hiding place and an eyesore.

I hope you take our observations into account in any decisions you make and as a tax payer and voter can you keep us informed of any news on this matter.

Yours faithfully,

[Redacted Signature] 2



To the Councillors

## Rothbury Park Exhibition

### Comments Sheet

Do you support the proposed change to -	✓ or X
The entrance area, on Rothbury Road?	X
The surfaced path through the Park?	✓
The Picnic Pocket?	✓
Sports pitches?	✓
Tree Forest Play area?	?
Play mounds?	?
Boundary planting?	X
The Orchard Way entrance?	✓

If you disagree with any of the proposed changes, please tell us why:

I have lived right near the Rothbury field for nearly 35 years.  
There does not look enough open space left. People come all the time  
to let dogs run off lead, when the sports pitch is taken other groups  
need space to play football and cricket etc. The Air Ambulance has landed  
many times and needs space. I have concerns over traffic congestion on  
Rothbury Road. 20 mph reminder signs are needed anyway.  
Too much vegetation which needs maintaining, No trees which block light and views.

Do you have any other suggestions for improving the Park?

A made up path to access the town will be most useful.

So that we can show the Town Council that local residents and park users have been involved in designing the proposals, please could you give your name and address. If you would like to be kept informed about the next stages of the proposals, please add an e-mail contact.

Name(s)	Address or postcode	E-mail (optional)
[REDACTED]	[REDACTED] Rothbury Rd	

Please place your comments in the box provided

**Office | Wymondham Town Council**

---

**From:** Kathryn Cross <clrkathryncross@gmail.com>  
**Sent:** 13 March 2023 09:34  
**To:** Office | Wymondham Town Council  
**Subject:** Agenda items for LEET

Morning all

I would like to have a couple of items for discussion on the LEET agenda please.

Firstly to agree the main centrepiece tree for the Queen Elizabeth Garden at Chandlers Hill.

If we are to get it included in the Queen's Green Canopy it needs to be registered by the end of March.

I am proposing either the Magnolia x brooklynensis 'Elizabeth' Tree or Amelanchier laevis, I attach photos of each





Also please can we discuss purchasing a bench to mark the Coronation of King Charles III, again I would propose that this is put in the Queen Elizabeth Garden or Kings Head Meadow.

Finally there is the Rothbury Park presentation which Ann Rostron has sent over already.

Let me know if there are any issues with the above or if you need me to pop in to chat, I can drop by on the way to school at about 3pm if needed.

Thanks

Councillor Kathryn Cross  
Wymondham Town Council  
Ketts Park  
Harts Farm Rd  
Wymondham  
Norfolk NR18 0UT